

New Hampshire

Economic Conditions



July 2009
Volume 109, Number 07

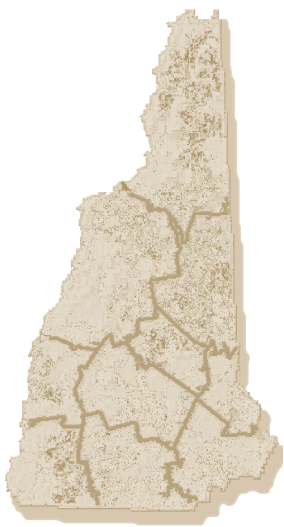
Visit our Web site at:
www.nh.gov/nhes/elmi/

Claims Activity2

Seasonally Adjusted Estimates
Unemployment Rates ..3
Current Employment Statistics3

Not Seasonally Adjusted Estimates
Unemployment Rates ..4
Current Employment Statistics5

For Additional Information7



Published by New Hampshire Employment Security's Economic and Labor Market Information Bureau

Union Membership in New Hampshire 2008

Each year, the United States Department of Labor, Bureau of Labor Statistics publishes information on union membership. Some limited data specific to New Hampshire is included below, along with national data.

New Hampshire had the second lowest share of union members among the New England states in 2008. The state had 10.6 percent of its employed workers reporting they were affiliated with a union. That was well below the national average of 12.4 percent. Like 27 other states, and the District of Columbia, the share of union workers in the state increased from 2007 to 2008. Vermont was one of only four states nationally, and the only

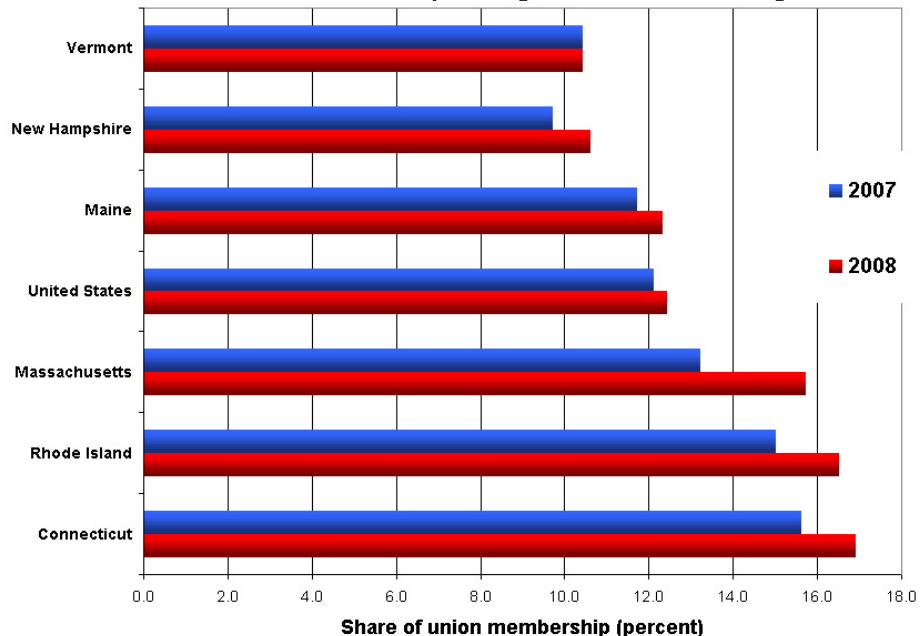
New England state, without a change in its share of union workers over the year. In contrast, all other New England states increased their share of union workers over-the-year.¹

Another measure of union membership includes workers whose jobs are covered by a union or employee association contract but have no union affiliation. This equates to roughly an additional 1.8 percent of the total employed in the state. Every state in New England had an increase in this group over-the-year.

National Age and Gender Demographics

Nationally, older workers tend to have a higher affiliation with unions. The two older age groups reported, the 45

Share of union membership among all workers in New England



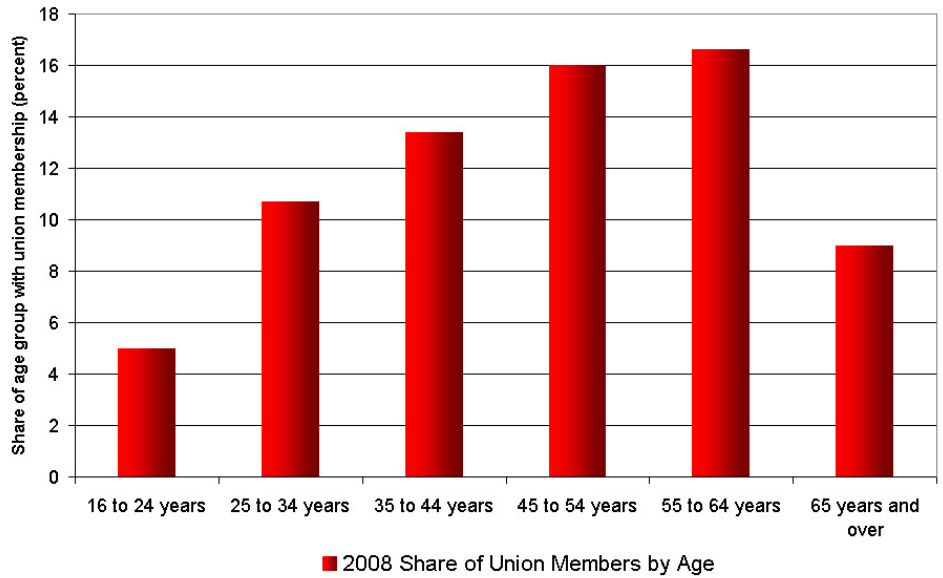
¹ United States Department of Labor, Bureau of Labor Statistics. Union Membership (Annual). <www.bls.gov/news.release/union2.toc.htm>. Accessed June 25, 2009

to 54 years and 55 to 64 years, have the highest union participation with a 16.0 and 16.6 percent union membership rates, respectively. Another 1.6 percent of the 45 to 54 year group and 1.8 percent of 55 to 64 year old workers were covered by those unions or employee associations. The age of these workers may be an explanation for their association to unions.

Historically, men have had a higher share of union membership than women. That is most likely attributable to jobs covered by a union or employee association contract traditionally being performed by one gender. Higher

Continued on page 7

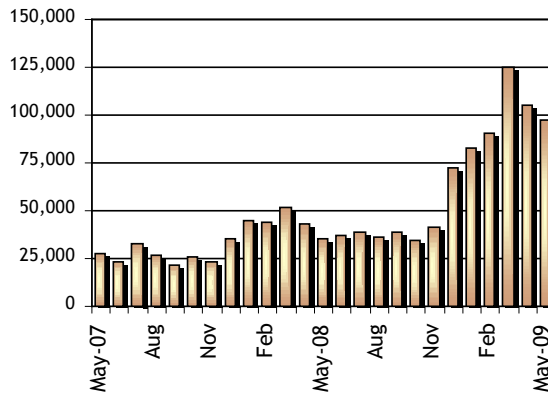
National share of worker age groups with union membership



Unemployment Compensation Claims Activity

Total Regular Unemployment Compensation Programs:				Change from Previous			
				Month		Year	
	May-09	Apr-09	May-08	Net	Percent	Net	Percent
Initial Claims	7,408	9,128	3,706	-1,720	-18.8%	3,702	99.9%
Continued Weeks	97,226	105,592	35,035	-8,366	-7.9%	62,191	177.5%

Claims Activity



Continued Weeks Claimed

May 07 to May 09

Trust Fund

Unemployment Compensation Fund

Unemployment compensation fund balance at the end of May	\$117,386,505.98
Average payment for a week of total unemployment:	\$279.14
Net benefits paid:	\$23,359,281.06
Net contributions received during the month:	\$24,922,087.24
Interest Received:	\$0.00
Reed Act Withdrawn for Administrative Costs:	\$0.00

			Change from Previous	
May-09	Apr-09	May-08	Month	Year
213.856	213.240	216.632	0.3%	-1.3%

United States
All Urban Areas (CPI-U)
(1982-1984=100)

Consumer Price Index

Continued from page 2

concentrations of union membership in the 45 to 64 age brackets are common to both genders.

Industries (National)

The public sector by far had the largest concentration of union membership, 36.8 percent in 2008, compared to 7.6 percent of private sector workers. The highest share was in local government with 42.2 percent of its workers with a union membership. Protective agencies, such as fire and police departments, are highly unionized and are classified as local government. Educators in local school districts are also local government.

Within the private sector, over a quarter of *Utilities* workers belonged to a union. *Transportation and warehousing* and *Telecommunications* followed with around 20 percent of workers being union members. *Construction* and *Educational services* also have a high likelihood of workers being unionized, with 15.6 and 13.8 percent respectively. The concentration of male workers in Construction can be considered a contributing factor to the higher share of male workers in unions.

Occupations

The concentration of union affiliation becomes more clear when the data are sorted by occupation. Education, training and library workers were also among the occupational groups with the highest union membership.

In 2008, 37.8 percent of these workers were members of a union and another 4.4 percent of workers were covered by union contracts without being affiliated. Workers in this field are typically employed by a local school district or municipality, contributing to local government's high share of union membership.

More than one of every three workers in Protective service occupations was a union member in 2008. Many of these workers are employed by their communities as fire fighters, police officers, sheriffs, and correctional officers, to name a few.

Other occupations with a high occurrence of union affiliation include Construction workers, Production workers and Transportation and material moving occupations. Again these occupations are held by a higher share of men and may give further explanation to why men have a higher likelihood of being union members.

Anita Josten

NH Employment Security
Economic and Labor Market
Information Bureau:

General Information
(603) 228-4124
<www.nh.gov/nhes/elmi/>

Research Unit
228-4173
Economist
229-4427
Covered Employment & Wages
228-4177
Current Employment Statistics
228-4179
Local Area Unemployment
Statistics
228-4167
Occupational Employment
Statistics
229-4315

New Hampshire Economic Conditions is published monthly in coordination with the Bureau of Labor Statistics and the Employment and Training Administration of the U.S. Department of Labor.

To Order Publications: Visit our Web site at <www.nh.gov/nhes/elmi/>; call (603) 228-4124; or send a written request to the following address:

ELMI Publications, NH Employment Security
32 South Main Street
Concord, NH 03301-4857

NH Employment Security is a proud member of America's Workforce Network and NH WORKS. NHES is an Equal Opportunity Employer and complies with the Americans with Disabilities Act. Auxiliary aids and services are available upon request to individuals with disabilities. TDD ACCESS: RELAY NH 1-800-735-2964.

New Hampshire
ELMI
Economic & Labor Market Information Bureau

NHES New Hampshire
Employment
Security
www.nh.gov/nhes
"We're working to keep New Hampshire working"