

# ECONOMIC CONDITIONS in New Hampshire



October 2001

Volume 101, Number 10

**New Web Site** ..... 2

**Seasonally Adjusted-What does it mean?** ..... 3

**Local Area Unemployment Statistics** ..... 5

**Current Employment Statistics** ..... 6

**For Additional Information** ..... 8

## New Hampshire is Ranked the Second Safest State

### Northern New England is one of the safest and healthiest areas in the nation

According to Morgan Quitno Press, New Hampshire was the safest state in New England and second safest in the nation for 2001. The Granite State has been the second safest state for five straight years and has been in the top six since the first report was released in 1994. From 1994 through 1996, however, there was a different methodology. For the fifth consecutive year, North Dakota was ranked the safest state in the nation. Maine and Vermont followed close behind occupying the third and fourth positions nationally. Both Maine and Vermont have been in the top five since 1994.

The *Most Dangerous/Safest State Award* is based on six areas of crime: murder, rape, robbery, aggravated assault, burglary, and motor vehicle theft. New Hampshire was ranked the safest with the lowest burglary and motor vehicle theft rates and had the second lowest assault and murder rates based on instances per 100,000 population. The worst crime rate New Hampshire had was rape, with a ranking of 22<sup>nd</sup> for 2001. This was an improvement from last year's 27<sup>th</sup> rank in this category.

over 75,000 each and provided the Federal Bureau of Investigations with crime data.

#### Healthy State

Morgan Quitno Press ranked New Hampshire the second healthiest state in New England and the third healthiest in the nation. Vermont and Minnesota moved past New Hampshire and claimed the top two *Healthiest State Awards* respectively.

The *Healthiest State Award* was based on twenty-one health related factors. New Hampshire was one of the top ten states in nearly half of the factors. The Granite State had one of the lowest teenage birth rates in the nation. The state also had one of the lowest occurrences of sexually transmitted diseases and a low percentage of overweight adults.

The Granite State did poorly in a few areas. The state had a low safety belt usage rate and a high age-adjusted death rate by malignant neoplasms (tumors). New Hampshire had a high percent of

Continued on page 2



Published by the Economic and Labor Market Information Bureau

*Employment*  
**SECURITY**

Manchester was the 77<sup>th</sup> *Safest City in America*. Morgan Quitno Press ranked 322 cities nationwide, based on the same six crime categories. The 322 cities ranked have a population of

### New Hampshire is the safest state in New England for five consecutive years

	1994	1995	1996	1997	1998	1999	2000	2001
Connecticut	20	15	21	19	19	16	17	14
Maine	2	1	2	3	3	3	3	3
Massachusetts	22	23	20	25	23	21	22	21
New Hampshire	6	4	4	2	2	2	2	2
Rhode Island	15	10	7	15	15	13	13	19
Vermont	1	2	1	4	4	4	5	4

## Morgan Quitno Ranking

continued from page 1

adults who are binge drinkers, ranking it the third worst state in this category.

### Livable State

New Hampshire dropped to thirteenth place in 2001, from its fifth place spot in 2000 for the *Most Livable State Award*. The Granite State also dropped from first to third place within New England, as Connecticut and Massachusetts moved ahead. This was the first time that Connecticut held the first place spot in New England and the second time in eleven years that Massachusetts has ranked higher than New Hampshire.

The *Most Livable State Award* was based on 43 factors. Two major factors caused New Hampshire's eight place drop.

According to preliminary estimates used by Morgan Quitno Press, the Granite State had one of the lowest job growths from 1999 to 2000. The state also had a high percent change in number of crimes, although it maintained the lowest crime rate in the nation. New Hampshire did poorly in a couple of other areas. The Granite State had the second highest electricity prices. The State had a high percent of fatalities in alcohol-related crashes as a percent of all highway fatalities. There may be a relationship between this and the percentage of binge drinkers in New Hampshire.

A large increase in the marriage rate helped offset some of the negative areas felt from the prior factors. New Hampshire was the top state in four of the factors, the lowest crime rate, the lowest infant mortality rate, the lowest percent of households receiving food stamps, and the highest per capita gross state product.

New England is one of the best areas to reside. The region claimed three of the top five safest states in the nation, four of the top ten healthiest states in the nation, and four of the top fifteen most livable states. All New England states ranked in the top 25 for all three Awards, except for Rhode Island, which was ranked the 28<sup>th</sup> Most Livable State. Within New England, New Hampshire was the best state, ranking in the top three for all three awards.

Gail Houston

### New Hampshire is the second healthiest state in New England

	1993	1994	1995	1996	1997	1998	1999	2000	2001
Connecticut	19	8	4	6	3	9	20	9	14
Maine	43	17	7	21	27	14	7	6	8
Massachusetts	34	9	15	20	10	16	8	8	10
New Hampshire	12	3	1	7	4	3	4	1	3
Rhode Island	43	11	22	29	30	22	21	13	15
Vermont	15	2	2	2	6	4	3	2	1

### New Hampshire and Connecticut switched places as the most livable state in New England between 2000 and 2001

	1991	1992	1993	1994	1995	1996	1997	1998	1999	2000	2001
Connecticut	16	11	17	9	12	15	11	12	11	13	6
Maine	9	17	13	18	16	16	16	26	15	15	17
Massachusetts	24	22	20	11	15	12	7	7	9	10	9
New Hampshire	1	2	1	1	8	7	2	11	8	5	13
Rhode Island	32	34	37	30	32	30	28	31	34	31	28
Vermont	6	9	11	8	17	8	13	17	14	12	15

## New Web site

New Web Site Address: <http://www.nhes.state.nh.us/elmi/>

## e-LMI

ELMI has a new look and an easier access address. The Web site has been modernized to maintain availability of New Hampshire labor market information over the Internet. The layout has changed and the information is in different locations. To name one change, Publications are now found under *Fast Find* or *Report/Publications*. The most recent economic indicators and core economic and unemployment statistics can be found under *Economy at a Glance*. Assistance is always available by calling (603) 228-4124.

## Released

*1999 County Profiles of New Hampshire's Counties, Cities, Towns, and Unincorporated Places* is now available in hardcopy. Ordering instructions are on page 8.

Labor force estimates, including employment, unemployment, and the unemployment rate, as well as estimates of employment levels by industry from the Current Employment Statistics survey, are given two ways – seasonally adjusted and not seasonally adjusted. Seasonal adjustment extracts changes that typically happen every year (normal seasonal variation). The resulting data should point out more clearly changes driven by the economy (cyclical and other nonseasonal movements). The table to the right lists the primary calendar-driven events considered when adjusting New Hampshire data for seasonality.

Scott Gessis

Typical Monthly Events that Affect Employment	
January	Construction affected by weather; winter sports up; colleges closed for break
February	Construction affected by weather; winter sports up; school vacations affect teachers and bus drivers
March	Town meetings affect local government employment
April	"Mud Season"; Income tax refunds affect retail employment
May	Memorial Day holiday is start of many summer tourist activities
June	Schools close; Tourism jumps
July	Schools closed; plants shut down; tourism continues
August	Most schools closed; Tourism continues
September	Schools reopen; Tourism ebbs
October	Tourism increases for Fall foliage
November	Decreased tourism; Holiday hiring begins
December	Christmas and all its effects; Ski season begins

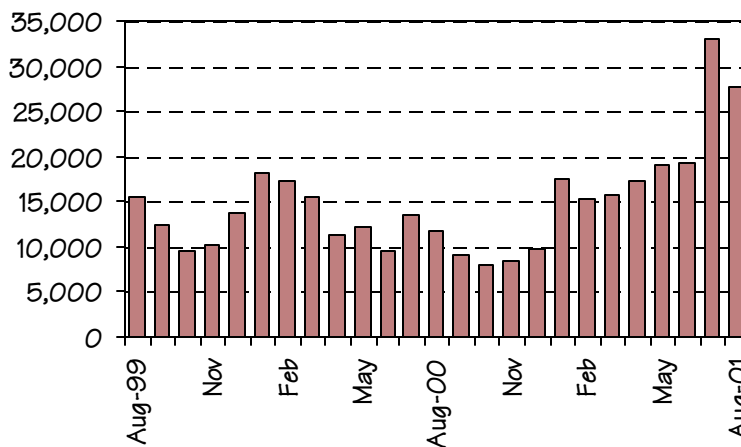
## Seasonal Adjustment – What does it mean?

Unemployment Compensation Claims Activity							
Total Regular Unemployment Compensation Programs:				Change from Previous			
	Aug-01	Jul-01	Aug-00	Month		Year	
				Net Percent	Net Percent	Net Percent	Net Percent
Initial Claims	5,313	7,589	2,427	-2,276	-30.0%	2,886	118.9%
Continued Weeks	27,764	32,968	11,742	-5,204	-15.8%	16,022	136.5%

## Claims Activity

Unemployment Compensation Fund, August 2001	
Unemployment compensation fund balance at the end of August:	\$332,306,699.08
Average payment for a week of total unemployment:	\$237.76
Net benefits paid:	\$5,580,548.69
Net contributions received during the month:	\$3,225,252.37
Interest Received:	\$0.00

## Trust Fund



## Continued Weeks Claimed

Aug-99 through Aug-01

The seasonal decrease from July to August of continued claims had a difference of 5,402, but still sustained the highest level since January 1996.

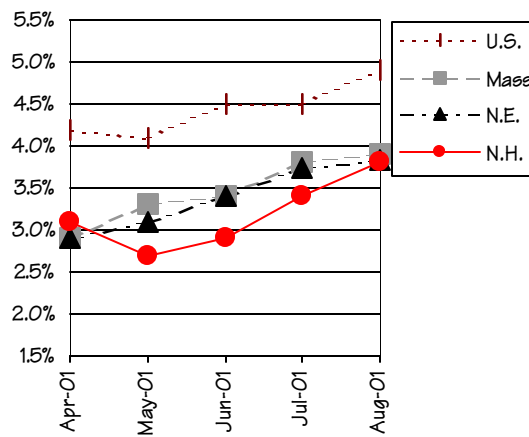
Aug-01	Jul-01	Aug-00	change from previous	
			Month	Year
177.5	177.5	172.8	0.0%	2.7%

United States  
All Urban Areas (CPI-U)  
(1982-1984=100)

## Consumer Price Index

## N.H. and U.S. Seasonally Adjusted Unemployment Rate

New Hampshire had the biggest increase over-the-month for all the Northeast and matched the unemployment rate for New England.



## Unemployment Rates by Region

	preliminary Aug-01	revised Jul-01	preliminary Aug-00
United States	4.9%	4.5%	4.1%
Northeast	4.4%	4.2%	3.8%
New England	3.8%	3.7%	2.7%
Connecticut	3.6%	3.3%	2.2%
Maine	4.0%	3.8%	3.3%
Massachusetts	3.9%	3.8%	2.6%
New Hampshire	3.8%	3.4%	2.9%
Rhode Island	4.5%	5.3%	4.2%
Vermont	3.3%	3.2%	2.9%
Mid Atlantic	4.7%	4.4%	4.3%
New Jersey	4.3%	4.0%	3.8%
New York	4.7%	4.4%	4.5%
Pennsylvania	4.9%	4.6%	4.2%

## Labor Force Estimates

By Place of Residence

	Apr-01	May-01	Jun-01	revised Jul-01	preliminary Aug-01
<b>New Hampshire</b>					
Unemployment Rate	2.1%	2.6%	2.9%	3.4%	3.8%
Civilian Labor Force	697,890	699,770	702,350	700,930	701,310
Number Employed	683,190	681,800	682,010	677,100	674,560
Number Unemployed	14,700	17,970	20,340	23,830	26,750
<b>United States (in thousands)</b>					
Unemployment Rate	4.5%	4.4%	4.5%	4.5%	4.9%
Civilian Labor Force	141,757	141,272	141,354	141,774	141,350
Number Employed	135,354	135,103	134,932	135,379	134,393
Number Unemployed	6,402	6,169	6,422	6,395	6,957

## Seasonally Adjusted Nonfarm Employment

By Place of Establishment

Industry	Apr-01	May-01	Jun-01	revised Jul-01	preliminary Aug-01
<b>TOTAL ALL INDUSTRIES</b>	626,300	627,300	627,000	626,200	624,500
Mining*	400	400	400	400	500
Construction	25,900	25,900	25,600	26,000	26,000
Manufacturing	104,600	104,300	103,200	101,800	101,800
Durable Goods	75,400	74,900	74,100	72,800	72,400
Nondurable Goods	29,200	29,400	29,100	29,000	29,400
Transportation and Public Utilities	21,700	21,500	21,500	21,700	21,800
Trade	165,000	166,100	166,400	166,400	166,000
Wholesale Trade	33,100	33,400	33,700	33,500	33,300
Retail Trade	131,900	132,700	132,700	132,900	132,700
Finance, Insurance, and Real Estate	32,700	32,700	32,900	32,600	32,800
Services	194,400	194,700	194,900	194,800	194,500
Government	81,600	81,700	82,100	82,500	81,100

\* Since N.H. mining employment exhibits no clear seasonal pattern, these estimates are not adjusted.



### Monthly Not Seasonally Adjusted New Hampshire Nonfarm Wage and Salary Employment

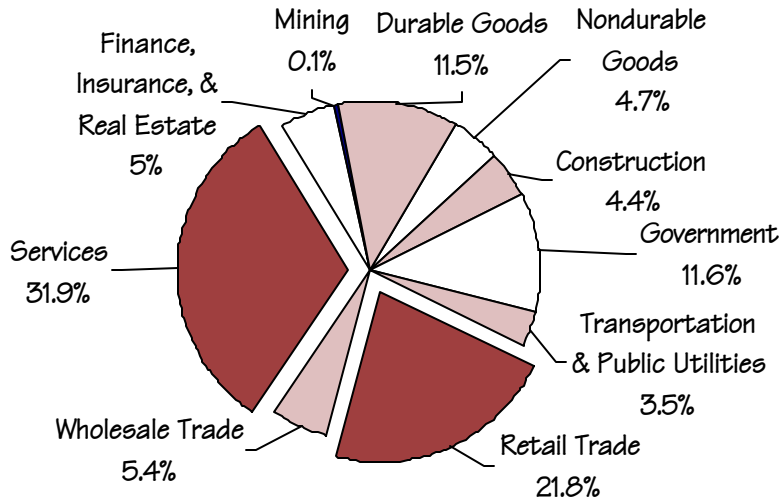
Total nonfarm employment numbers were still 2,000 higher than August 2000. Services was a major contributor to available jobs over-the-year, while Manufacturing continued to lose over-the-year.

More detailed industry information is available at our Web site

Current Employment Statistics Employment by Industry - Number of Jobs by place of establishment	Number of Jobs			Net Change	
	Aug-01 (preliminary)	Jul-01 (revised)	Aug-00	From Previous Month	Year
Total All Industries	624,500	626,800	622,500	-2,300	2,000
Private Employment Total	552,200	553,400	549,500	-1,200	2,700
Mining	500	500	500	0	0
Construction	27,600	27,600	26,700	0	900
Manufacturing	100,900	101,200	105,400	-300	-4,500
Durable Goods Total	71,900	72,200	75,400	-300	-3,500
Nondurable Goods Total	29,000	29,000	30,000	0	-1,000
Transportation & Public Utilities	21,100	21,300	19,800	-200	1,300
Trade Total	169,800	170,100	168,400	-300	1,400
Wholesale Trade	33,700	34,000	33,600	-300	100
Retail Trade	136,100	136,100	134,800	0	1,300
Finance, Insurance, & Real Estate	33,000	32,900	33,000	100	0
Services	199,300	199,800	195,700	-500	3,600
Government Total	72,300	73,400	73,000	-1,100	-700

*Note: Totals are rounded to hundreds*

### Divisional Percentages of Nonfarm Employment



The Manchester area employment numbers were relatively unchanged over-the-month. Over-the-year increases were attributed to Construction, Trade, and Services.

### Current Employment Statistics (CES) Manchester PMSA

Employment by Industry Number of jobs by place of establishment	Number of Jobs			Change	
	Aug-01 (preliminary)	Jul-01 (revised)	Aug-00	from previous: Month	Year
Total All Industries	107,600	107,500	105,300	100	2,300
Private Employment Total	97,800	97,600	95,200	200	2,600
Construction & Mining	6,000	5,900	5,400	100	600
Manufacturing	15,000	15,200	15,200	-200	-200
Durable Goods	10,700	10,900	10,800	-200	-100
Transportation & Public Utilities	5,700	6,000	5,300	-300	400
Trade Total	27,100	27,000	26,100	100	1,000
Wholesale Trade	8,000	8,100	7,400	-100	600
Retail Trade	19,100	18,900	18,700	200	400
Finance, Insurance, & Real Estate	8,000	7,800	7,900	200	100
Services	36,000	35,700	35,300	300	700
Government Total	9,800	9,900	10,100	-100	-300

### Current Employment Statistics Nashua PMSA

Employment by Industry Number of jobs by place of establishment	Number of Jobs			Change	
	Aug-01	Jul-01	Aug-00	from previous:	
	(preliminary)	(revised)		Month	Year
Total All Industries	101,000	100,600	99,500	400	1,500
Private Employment Total	93,000	92,600	91,400	400	1,600
Construction & Mining	3,900	3,800	3,600	100	300
Manufacturing	27,700	27,500	27,800	200	-100
Durable Goods	21,700	21,500	21,900	200	-200
Nondurable Goods	6,000	6,000	5,900	0	100
Transportation & Public Utilities	3,000	3,200	3,000	-200	0
Trade Total	27,200	27,200	25,900	0	1,300
Wholesale Trade	4,800	4,900	4,700	-100	100
Retail Trade	22,400	22,300	21,200	100	1,200
Finance, Insurance, & Real Estate	6,100	5,900	5,900	200	200
Services	25,100	25,000	25,200	100	-100
Government Total	8,000	8,000	8,100	0	-100

FIRE and Manufacturing combined to win the seesaw battle of employment numbers in the Nashua area over-the-month.

### Current Employment Statistics Portsmouth-Rochester, NH-ME PMSA

Employment by Industry Number of jobs by place of establishment	Number of Jobs			Change	
	Aug-01	Jul-01	Aug-00	from previous:	
	(preliminary)	(revised)		Month	Year
Total All Industries	127,500	127,700	125,500	-200	2,000
Private Employment Total	107,700	107,300	106,000	400	1,700
Construction & Mining	4,600	4,600	4,300	0	300
Manufacturing	17,800	17,400	18,400	400	-600
Durable Goods	11,200	10,800	11,400	400	-200
Nondurable Goods	6,600	6,600	7,000	0	-400
Transportation & Public Utilities	4,200	4,200	3,800	0	400
Trade Total	35,300	35,400	35,100	-100	200
Wholesale Trade	7,300	7,300	6,800	0	500
Retail Trade	28,000	28,100	28,300	-100	-300
Finance, Insurance, & Real Estate	6,300	6,200	6,500	100	-200
Services	39,500	39,500	37,900	0	1,600
Government Total	19,800	20,400	19,500	-600	300

The most prominent increase in the Portsmouth-Rochester area was from Manufacturing employment.

### Average Earnings and Hours of Production Workers in Manufacturing

Industry	Average Weekly Earnings			Average Weekly Hours			Average Hourly Earnings		
	Aug-01 (prelim.)	Jul-01 (revised)	Aug-00	Aug-01 (prelim.)	Jul-01 (revised)	Aug-00	Aug-01 (prelim.)	Jul-01 (revised)	Aug-00
NEW HAMPSHIRE									
All Manufacturing	\$563.39	\$559.18	\$539.34	40.3	40.2	40.4	\$13.98	\$13.91	\$13.35
Durable Goods	563.18	560.52	535.51	40.4	40.5	40.6	13.94	13.84	13.19
Nondurable Goods	633.69	614.03	595.31	41.8	41.1	39.9	15.16	14.94	14.92
MANCHESTER PMSA									
All Manufacturing	\$628.33	\$624.88	\$587.82	40.2	39.4	40.4	\$15.63	\$15.86	\$14.55
Durable Goods	\$680.24	\$674.86	\$595.32	43.3	42.1	41.0	15.71	16.03	14.52
NASHUA PMSA									
All Manufacturing	\$575.53	\$605.49	\$554.20	38.6	41.5	40.9	\$14.91	\$14.59	\$13.55
Durable Goods	547.79	580.32	527.47	38.2	41.9	40.7	14.34	13.85	12.96
Nondurable Goods	676.49	690.80	654.37	40.1	40.0	41.6	16.87	17.27	15.73
PORTSMOUTH-ROCHESTER, NH-MA PMSA									
All Manufacturing	\$575.91	\$552.18	\$558.73	40.5	40.1	40.4	\$14.22	\$13.77	\$13.83
Durable Goods	622.80	616.09	628.16	41.3	41.1	42.3	15.08	14.99	14.85
Nondurable Goods	488.97	444.66	441.94	38.9	38.3	37.2	12.57	11.61	11.88

Average weekly earnings in Manchester area soared above the other areas with \$628.33. That was almost \$50.00 higher than the next listed area.

**For Additional Information**



New Hampshire Employment Security Economic and Labor Market Information Bureau:		New Hampshire Employment Security Local Offices:	
General Information ..... 228-4124 Research Unit ..... 228-4173 Economist ..... 228-4122 Covered Employment and Wages (ES-202) ..... 228-4177 Current Employment Statistics (790) ..... 228-4127 Local Area Unemployment Statistics ..... 228-4175 Mass Layoff Statistics (MLS) ..... 228-4175 Occupational Employment Statistics ..... 229-4315	Internet address: ..... <a href="http://www.nhes.state.nh.us/elmi/">www.nhes.state.nh.us/elmi/</a>		
US Department of Labor Boston Regional Office: Bureau of Labor Statistics Information ..... (617) 565-2327		Berlin ..... 752-5500 Claremont ..... 543-3111 Concord ..... 228-4100 Conway ..... 447-5924 Keene ..... 352-1904 Laconia ..... 524-3960 Lebanon ..... 448-6340 Littleton ..... 444-2971 Manchester ... 627-7841 Nashua ..... 882-5177 Portsmouth ... 436-3702 Salem ..... 893-9185 Somersworth .. 742-3600	
<p><b>About This Publication:</b>  <i>Economic Conditions in New Hampshire</i> is published monthly in coordination with the Bureau of Labor Statistics and the Employment and Training Administration of the U.S. Department of Labor. NHES is an Equal Opportunity Employer and complies with the Americans with Disabilities Act. Auxiliary aids and services are available upon request to individuals with disabilities. TDD ACCESS: RELAY NH 1-800-735-2964.</p>			
<p><b>To Order Publications:</b>                  Visit our Web site at &lt;<a href="http://www.nhes.state.nh.us/elmi/">www.nhes.state.nh.us/elmi/</a>&gt;; call (603) 228-4124; or send a written request to the following address:</p> <p style="text-align: center;"> <b>ELMI Publications</b>  <b>New Hampshire Employment Security</b>  <b>32 South Main Street</b>  <b>Concord, New Hampshire 03301-4857</b> </p>			

NH EMPLOYMENT SECURITY  
 32 SOUTH MAIN STREET  
 CONCORD NH 03301-4857

OFFICIAL BUSINESS

ADDRESS SERVICE REQUESTED