

# ECONOMIC CONDITIONS in New Hampshire



October 2000

Volume 100, Number 10

Childcare 2000  
now available ..... 2

Paper on Nurses in  
New Hampshire  
is published ..... 2

Bankruptcy STAT  
Released ..... 2

Internet Use in  
New Hampshire.... 3

Local Area  
Unemployment  
Statistics ..... 5

Current  
Employment  
Statistics ..... 6

For Additional  
Information ..... 8

## First Quarter 2000 Employment Up 16,000 Over-The-Year

### Average Weekly Wage Continued Upward

**P**reliminary total covered employment in New Hampshire for first quarter 2000 recorded growth of 16,279 jobs over first quarter 1999. It increased from 576,440 to 592,719, a jump of 2.8 percent. In comparison, similar data for first quarter 1999 showed an increase of 2.6 percent over first quarter 1998.

Services employment exhibited both the largest percentage gain, 4.5 percent, and numerical increase, 9,104 jobs. Business services, specifically computer services, and Education services, mostly in local government, led the division. Retail trade expanded by 4,350 up 3.5 percent from first quarter 1999. About a third of the gain was in Food stores. Manufacturing registered the only drop in employment with a loss of 707 jobs quarter-over-quarter. This 0.7 percent loss was somewhat minimal in comparison to the first quarter 1999, when Manufacturing employment dropped 2.4 percent (2,620 jobs) from first quarter 1998.

Concurrently, average weekly wages rose 15.6 percent, first quarter 1999 to first quarter 2000. This jump may be calendar driven as first quarter 2000 had one more Friday payday than first quarter 1999 (because of New Years Day). In fourth quarter 1999 the average weekly wage rose only 3.7 percent over-the-year. Furthermore, from April 1999 through March 2000, the 12-month increase in average weekly wages, compared to April 1998 through March 1999, was 6.8 percent. This may be a more accurate gauge of the trend in average weekly wages.

Manufacturing led the way with a 25.6 percent leap, much of it in machinery manufacturing. The average weekly wage in both Finance, insurance, and real estate and Wholesale trade exceeded \$1,000, a feat heretofore seen only in the fourth quarter.

*Martin Capodice*

### 1st Quarter 2000 Employment and Wages

	1st Quarter 2000 Average		1st Quarter: 1999 to 2000 Employment Change		1st Quarter: 1999 to 2000 Weekly Wage Change	
	Employment	Weekly Wage	Net	Percent	Net	Percent
Total Private & Government	592,719	\$660.62	16,279	2.8%	\$89.08	15.6%
Agriculture, Forestry, & Fishing	4,553	\$418.46	151	3.4%	\$10.77	2.6%
Mining	355	\$631.69	-22	-5.8%	\$27.54	4.6%
Construction	23,920	\$664.23	828	3.6%	\$45.08	7.3%
Manufacturing	106,754	\$914.69	-707	-0.7%	\$186.15	25.6%
Transportation & Public Utilities	25,573	\$765.69	592	2.4%	\$79.00	11.5%
Wholesale Trade	31,895	\$1,004.00	866	2.8%	\$141.00	16.3%
Retail Trade	127,396	\$350.23	4,350	3.5%	\$38.00	12.2%
Finance, Insurance, & Real Estate	31,479	\$1,067.23	354	1.1%	\$171.54	19.2%
Services	210,870	\$603.85	9,104	4.5%	\$70.69	13.3%
Public Administration	28,727	\$611.46	746	2.7%	\$40.69	7.1%

Published by the Economic and  
Labor Market Information Bureau

*Employment*  
**SECURITY**

# New Publications

Now available from the Economic and Labor Market Information Bureau

## ***Childcare 2000: A Survey of New Hampshire Employers, July 2000, 18 pages***

Half of all employers responding to the recent Childcare 2000 survey said they have lost employee hours as a result of childcare issues. Yet, only about 30 percent said their employees have actually asked for assistance. Additionally, many indicated they did not have a plan or program in place for dealing specifically with childcare issues. The majority of those employers, however, seemed to be very flexible in their handling of those issues.

The information in this new publication provides another valuable resource to aid in developing successful strategies for dealing with childcare issues that could become barriers to labor force participation.

The Childcare 2000 publication, along with the original survey instrument and additional data compiled during the preparation of the publication are available at our web site: [www.nhes.state.nh.us/lmipage.htm](http://www.nhes.state.nh.us/lmipage.htm).

---

## ***STAT - Bankruptcy Trends in New Hampshire, September 2000***

The economy is well into what can be called an expansion period with salaries up, unemployment down, and more businesses needing more employees. The news is good. New records are being set regularly in employment, productivity, unemployment rates, and more. The question is: how has all this 'good news' been reflected in the 'not-so-good news' of bankruptcy filings? After climbing for four successive years, bankruptcy filings in New Hampshire and nationally now show a downward trend. To find out just how much they have declined, the types of bankruptcies filed, and for additional resources, read *Bankruptcy Trends in New Hampshire*. It was released and distributed in September 2000 in the second edition of our newest publication, *STAT*.

---

## ***Nurses in New Hampshire, September 2000, 12 pages***

Nearly 19,000 Nurses were employed in New Hampshire in 1998. Where did they work? What kind of training did they need? How much did they earn? Find the answers to these questions and more in our newest monograph, *Nurses in New Hampshire*. This 12-page paper focuses on Registered Nurses; Licensed Practical Nurses; and Nursing Aides, Orderlies, and Attendants (including Certified Nursing Assistants).

---

These and other ELMI publications are available by calling (603) 228-4124; by accessing our Web site at <[www.nhes.state.nh.us/lmipage.htm](http://www.nhes.state.nh.us/lmipage.htm)>; or by sending a request to:

ELMI Publications  
New Hampshire Employment Security  
32 South Main Street  
Concord, NH 03301 - 4857

### Unemployment Compensation Claims Activity

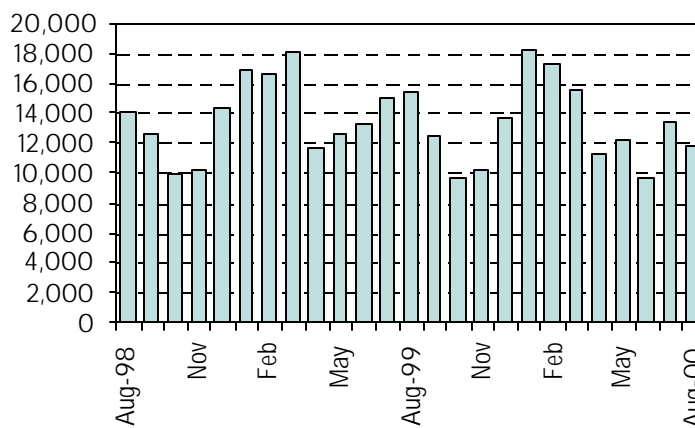
Total Regular Unemployment Compensation Programs:				Change from Previous			
	Aug-00	Jul-00	Aug-99	Month	Year		
				Net Percent	Net Percent		
Initial Claims	2,427	2,990	1,916	(563) -18.8%	511	26.7%	
Continued Weeks	11,742	13,427	15,347	(1,685) -12.5%	(3,605)	-23.5%	

Claims Activity

### Unemployment Compensation Fund, August 2000

Unemployment compensation fund balance at the end of August:	\$319,875,413.16
Average payment for a week of total unemployment:	\$211.22
Net benefits paid:	\$1,985,869.67
Net contributions received during the month:	\$3,487,287.08
Interest Received:	\$0.00

Trust Fund



Continued Weeks Claimed  
Aug-98 through Aug-00

Unlike 1999, Continued Claims didn't increase from July to August

Aug-00	Jul-00	Aug-99	change from previous	
			Month	Year
172.7	172.6	167.1	0.1%	3.4%

United States All Urban Areas (CPI-U) (1982-1984=100)

Consumer Price Index

According to the *New Hampshire 2000 Survey* conducted in June by the University of New Hampshire Survey Center, more than three-quarters of New Hampshire households own at least one computer. Almost two-thirds of the respondents said they used their home computers to access the Internet. Just over forty percent say they access the Internet from work.

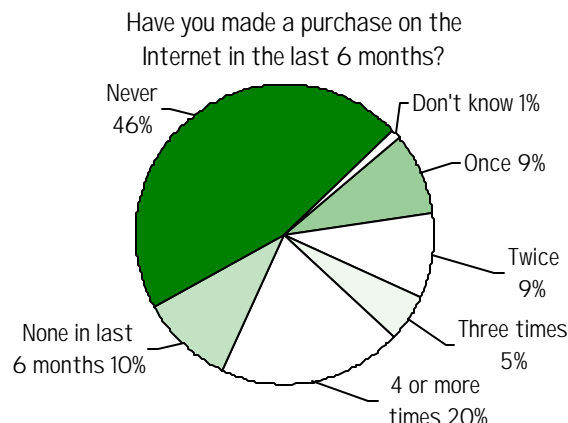
they have purchased something over the Internet. More than 40 percent of them said they had done so in the last six months.

Elisabeth Picard

Internet use in New Hampshire

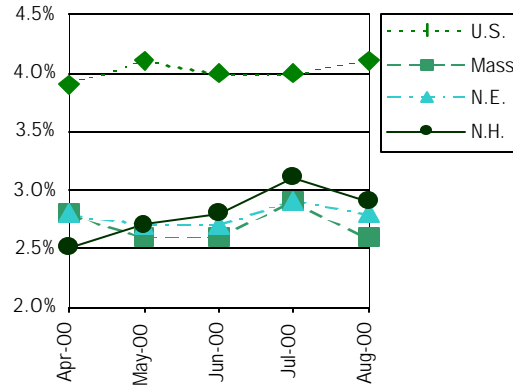
Half of all granite-staters are e-buying

So, what are Granite Staters doing on the Internet? Some are surfing, some are chatting, and some are shopping! Over 50 percent of the respondents said



## N.H. and U.S. Seasonally Adjusted Unemployment Rate

While three New England states, including New Hampshire, had lower rates in August than in July, Connecticut and Rhode Island saw their over-the-month rate increase.



### Unemployment Rates by Region

	preliminary Aug-00	revised Jul-00	preliminary Aug-99
United States	4.1%	4.0%	4.2%
Northeast	3.8%	3.7%	4.4%
New England	2.8%	2.9%	3.3%
Connecticut	2.5%	2.4%	3.0%
Maine	3.2%	3.5%	4.1%
Massachusetts	2.6%	2.9%	3.2%
New Hampshire	2.9%	3.1%	2.6%
Rhode Island	4.5%	4.0%	4.2%
Vermont	2.7%	2.7%	3.0%
Mid Atlantic	4.2%	4.1%	4.9%
New Jersey	4.0%	3.7%	4.7%
New York	4.5%	4.2%	5.2%
Pennsylvania	4.0%	4.0%	4.5%

## Labor Force Estimates

By Place of Residence

	Apr-00	May-00	Jun-00	revised Jul-00	preliminary Aug-00
<b>New Hampshire</b>					
Unemployment Rate	2.5%	2.7%	2.8%	3.1%	2.9%
Civilian Labor Force	680,630	681,760	684,590	686,440	684,420
Number Employed	663,920	663,360	665,090	665,450	664,640
Number Unemployed	16,710	18,400	19,500	20,990	19,780
<b>United States (in thousands)</b>					
Unemployment Rate	3.9%	4.1%	4.0%	4.0%	4.1%
Civilian Labor Force	141,230	140,489	140,672	140,399	140,742
Number Employed	135,706	134,715	135,179	134,749	134,912
Number Unemployed	5,524	5,774	5,583	5,650	5,829

## Seasonally Adjusted Nonfarm Employment

By Place of Establishment

Industry	Apr-00	May-00	Jun-00	revised Jul-00	preliminary Aug-00
<b>TOTAL ALL INDUSTRIES</b>	613,200	611,500	611,800	610,200	611,500
Mining*	400	400	500	500	500
Construction	26,200	26,000	26,000	26,200	25,900
Manufacturing	105,100	105,300	105,500	106,000	105,600
Durable Goods	74,800	75,100	75,300	75,800	75,700
Nondurable Goods	30,300	30,200	30,200	30,200	29,900
Transportation and Public Utilities	21,700	21,700	21,000	20,900	20,000
Trade	162,800	161,000	161,800	160,900	162,200
Wholesale Trade	32,100	32,000	31,900	32,000	31,700
Retail Trade	130,700	129,000	129,900	128,900	130,500
Finance, Insurance, and Real Estate	32,800	33,000	32,800	32,900	32,700
Services	180,700	179,800	179,600	179,800	181,500
Government	83,500	84,300	84,600	83,000	83,100

\* Since N.H. mining employment exhibits no clear seasonal pattern, these estimates are not adjusted.

**Labor Force Estimates**

New Hampshire	Aug-00	Jul-00	Aug-99
Number of Workers	preliminary	revised	
Total Civilian Labor Force	694,940	700,280	677,330
Employed	676,460	681,210	661,530
Unemployed	18,480	19,070	15,800
Unemployment Rate (% of labor force)	2.7%	2.7%	2.3%

**Unemployment Rates by Area**

	Aug-00	Jul-00	Aug-99
	preliminary	revised	

**U.S. and Regional States**

United States	4.1%	4.2%	4.2%
Northeast	3.6%	3.9%	4.2%
New England	2.5%	2.8%	2.9%
Connecticut	2.1%	2.5%	2.6%
Maine	2.4%	2.7%	3.2%
Massachusetts	2.4%	2.9%	3.0%
New Hampshire	2.7%	2.7%	2.3%
Rhode Island	4.3%	3.7%	4.0%
Vermont	2.2%	2.5%	2.5%
Mid Atlantic	4.1%	4.3%	4.7%
New Jersey	3.9%	4.3%	4.6%
New York	4.3%	4.4%	5.0%
Pennsylvania	3.9%	4.3%	4.3%

**Labor Market Areas (NH Portions Only)**

Berlin LMA	3.3%	3.2%	2.3%
Seabrook-South Hampton, NH			
Portion Boston MA-NH PMSA	5.1%	4.6%	4.0%
Claremont LMA	2.2%	2.1%	2.0%
Colebrook LMA	3.6%	3.8%	1.7%
Concord LMA	2.3%	2.4%	1.5%
Conway LMA	2.3%	2.3%	1.5%
NH Portion Hartford-Lebanon			
VT-NH LMA	1.5%	1.4%	1.0%
NH Portion Keene-Brattleboro			
NH-VT LMA	3.2%	3.0%	2.2%
Laconia LMA	2.2%	2.0%	1.5%
Lancaster LMA	3.1%	2.8%	2.2%
Salem-Derry, NH Portion Lawrence			
MA-NH PMSA	4.5%	4.3%	3.7%
Littleton LMA	2.3%	2.2%	1.8%
Pelham, NH Portion Lowell MA-NH			
PMSA	4.1%	3.8%	4.1%
Manchester LMA	2.2%	2.2%	1.9%
Nashua LMA	2.7%	2.6%	2.6%
Peterborough LMA	2.9%	2.9%	2.0%
Plymouth LMA	1.8%	1.6%	1.5%
NH Portion Portsmouth-Rochester,			
NH-ME PMSA	2.3%	3.1%	1.7%

**Counties**

Belknap	2.3%	2.1%	1.6%
Carroll	2.3%	2.3%	1.5%
Cheshire	3.3%	3.1%	2.2%
Coos	3.4%	3.2%	2.1%
Grafton	1.7%	1.6%	1.3%
Hillsborough	2.5%	2.4%	2.3%
Merrimack	2.2%	2.2%	1.6%
Rockingham	3.5%	3.6%	2.8%
Strafford	2.4%	3.4%	1.7%
Sullivan	2.1%	2.0%	2.0%

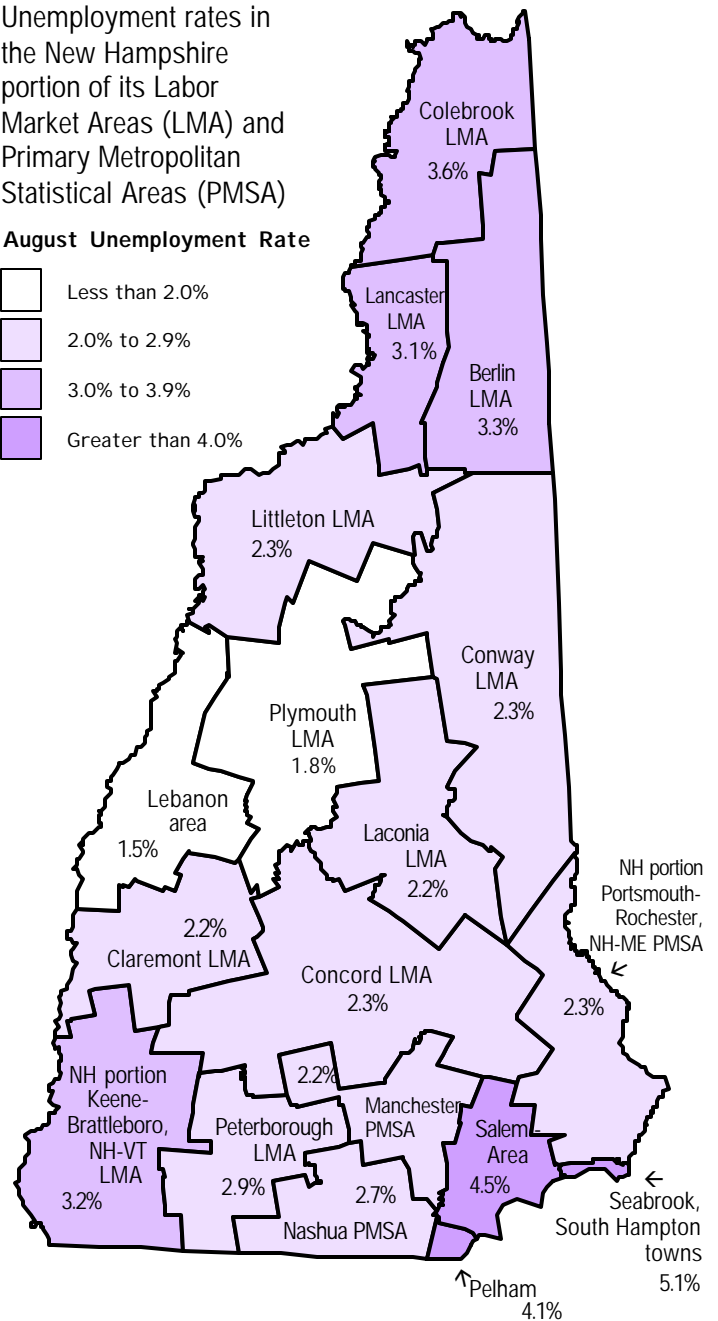
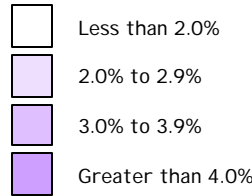
Local Area  
Unemployment  
Statistics  
(LAUS)

Not Seasonally  
Adjusted

By Place of Residence

Unemployment rates in the New Hampshire portion of its Labor Market Areas (LMA) and Primary Metropolitan Statistical Areas (PMSA)

**August Unemployment Rate**



Fewer Census workers needed, summer schools closing for the season, and labor disputes in the communications industry led to a large over-the-month decrease in total employment.

More detailed industry information is available at our Web site

### Monthly Not Seasonally Adjusted New Hampshire Nonfarm Wage and Salary Employment

Current Employment Statistics Employment by Industry - Number of Jobs by place of establishment	Number of Jobs			Net Change	
	Aug-00 (preliminary)	Jul-00 (revised)	Aug-99	From Previous	
				Month	Year
Total All Industries	611,400	612,800	607,700	-1,400	3,700
Private Employment Total	537,700	537,400	534,800	300	2,900
Mining	500	500	500	0	0
Construction	27,500	27,600	25,900	-100	1,600
Manufacturing	105,300	104,500	106,200	800	-900
Durable Goods Total	75,500	74,800	76,000	700	-500
Nondurable Goods Total	29,800	29,700	30,200	100	-400
Transportation & Public Utilities	19,400	20,800	21,100	-1,400	-1,700
Trade Total	166,000	165,800	165,200	200	800
Wholesale Trade	32,400	32,600	32,500	-200	-100
Retail Trade	133,600	133,200	132,700	400	900
Finance, Insurance, & Real Estate	33,100	33,200	33,300	-100	-200
Services	185,900	185,000	182,600	900	3,300
Government Total	73,700	75,400	72,900	-1,700	800

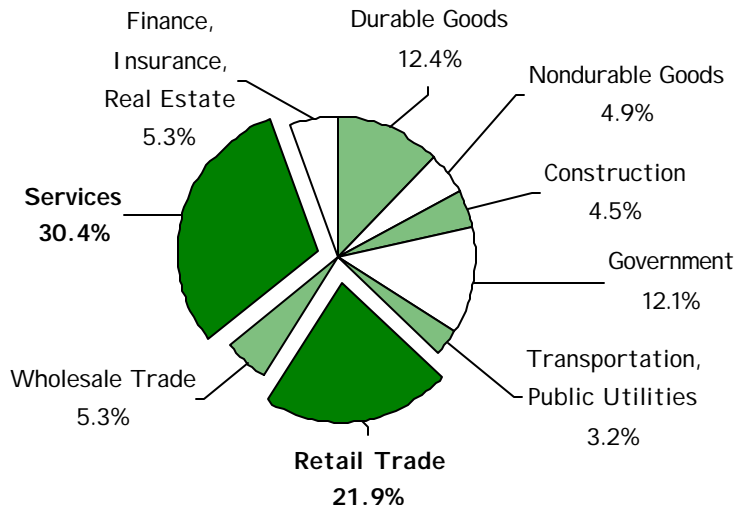
Note: Totals are rounded to hundreds

Employment increases in Manufacturing and Services offset the large decrease in Transportation & Public utilities in the Manchester PMSA.

### Current Employment Statistics (CES) Manchester PMSA

Employment by Industry Number of jobs by place of establishment	Number of Jobs			Change	
	Aug-00 (preliminary)	Jul-00 (revised)	Aug-99	from previous:	
				Month	Year
Total All Industries	103,900	104,300	101,800	-400	2,100
Private Employment Total	93,900	94,000	92,000	-100	1,900
Construction & Mining	5,400	5,500	5,200	-100	200
Manufacturing	15,700	15,300	14,800	400	900
Durable Goods	10,900	10,700	10,200	200	700
Transportation & Public Utilities	5,700	6,500	6,100	-800	-400
Trade Total	25,600	25,600	24,800	0	800
Wholesale Trade	6,600	6,500	6,600	100	0
Retail Trade	19,000	19,100	18,200	-100	800
Finance, Insurance, & Real Estate	7,500	7,600	8,000	-100	-500
Services	34,000	33,500	33,100	500	900
Government Total	10,000	10,300	9,800	-300	200

Divisional Percentages of Nonfarm Employment



**Current Employment Statistics  
Nashua PMSA**

Employment by Industry Number of jobs by place of establishment	Aug-00	Jul-00	Aug-99	from previous:	
	(preliminary)	(revised)		Month	Year
Total All Industries	95,700	95,500	95,200	200	500
Private Employment Total	87,700	87,600	87,800	100	-100
Construction & Mining	3,600	3,600	3,200	0	400
Manufacturing	27,500	27,400	27,300	100	200
Durable Goods	21,600	21,500	21,200	100	400
Nondurable Goods	5,900	5,900	6,100	0	-200
Transportation & Public Utilities	3,100	3,100	3,000	0	100
Trade Total	24,700	24,500	25,000	200	-300
Wholesale Trade	4,500	4,600	4,700	-100	-200
Retail Trade	20,200	19,900	20,300	300	-100
Finance, Insurance, & Real Estate	4,300	4,400	5,200	-100	-900
Services	24,500	24,600	24,100	-100	400
Government Total	8,000	7,900	7,400	100	600

Total employment increased over-the-month in the Nashua PMSA. Retail trade showed the largest increase, offsetting losses in other industries.

**Current Employment Statistics  
Portsmouth-Rochester, NH-ME PMSA**

Employment by Industry Number of jobs by place of establishment	Aug-00	Jul-00	Aug-99	from previous:	
	(preliminary)	(revised)		Month	Year
Total All Industries	122,800	121,900	121,000	900	1,800
Private Employment Total	103,400	102,300	101,500	1,100	1,900
Construction & Mining	4,300	4,200	4,400	100	-100
Manufacturing	18,300	17,900	18,300	400	0
Durable Goods	11,700	11,400	11,400	300	300
Nondurable Goods	6,600	6,500	6,900	100	-300
Transportation & Public Utilities	3,400	3,700	3,800	-300	-400
Trade Total	35,400	35,200	34,100	200	1,300
Wholesale Trade	6,100	6,000	6,000	100	100
Retail Trade	29,300	29,200	28,100	100	1,200
Finance, Insurance, & Real Estate	6,600	6,600	6,600	0	0
Services	35,400	34,700	34,300	700	1,100
Government Total	19,400	19,600	19,500	-200	-100

Only Transportation & public utilities and Government lost employment over-the-month. Services had the largest increase in the Portsmouth area.

**Average Earnings and Hours of Production Workers in Manufacturing**

Industry	Average Weekly Earnings			Average Weekly Hours			Average Hourly Earnings		
	Aug-00 (prelim.)	Jul-00 (revised)	Aug-99	Aug-00 (prelim.)	Jul-00 (revised)	Aug-99	Aug-00 (prelim.)	Jul-00 (revised)	Aug-99
<b>NEW HAMPSHIRE</b>									
All Manufacturing	\$535.18	\$536.00	\$529.32	40.3	40.0	40.1	\$13.28	\$13.40	\$13.20
Durable Goods	533.08	533.89	531.44	40.6	40.6	40.2	13.13	13.15	13.22
Nondurable Goods	541.51	540.01	523.37	39.7	38.6	39.8	13.64	13.99	13.15
<b>MANCHESTER PMSA</b>									
All Manufacturing	\$549.22	\$569.97	\$544.63	38.3	39.2	38.3	\$14.34	\$14.54	\$14.22
Durable Goods	586.37	596.30	545.21	39.7	40.4	38.1	14.77	14.76	14.31
<b>NASHUA PMSA</b>									
All Manufacturing	\$584.81	\$562.63	\$587.72	41.3	40.8	42.1	\$14.16	\$13.79	\$13.96
Durable Goods	531.26	529.34	575.10	40.4	40.5	42.6	13.15	13.07	13.50
Nondurable Goods	756.80	668.87	628.22	44.0	41.7	40.4	17.20	16.04	15.55
<b>PORTSMOUTH-ROCHESTER, NH-MA PMSA</b>									
All Manufacturing	\$559.10	\$547.82	\$553.01	40.9	40.4	41.8	\$13.67	\$13.56	\$13.23
Durable Goods	625.22	600.29	614.11	43.0	41.6	43.4	14.54	14.43	14.15
Nondurable Goods	436.16	443.81	454.70	36.9	37.9	39.3	11.82	11.71	11.57

Average weekly earnings, average weekly hours, and average hourly earnings for production workers in Manufacturing increased over-the-month in both the Nashua and Portsmouth areas. The Manchester area saw across the board decreases for manufacturing workers.



## For Additional Information



New Hampshire Employment Security  
Economic and Labor Market Information Bureau:

General Information .....	228-4124
Research Unit .....	228-4173
Economist .....	228-4122
Covered Employment and Wages (ES-202) .....	228-4177
Current Employment Statistics (790) .....	228-4127
Local Area Unemployment Statistics .....	228-4175
Mass Layoff Statistics (MLS) .....	228-4175
Occupational Employment Statistics .....	229-4315

**Internet address: [www.nhes.state.nh.us/lmipage.htm](http://www.nhes.state.nh.us/lmipage.htm)**

New Hampshire  
Employment Security  
Local Offices:

Berlin .....	752-5500
Claremont .....	543-3111
Concord .....	228-4100
Conway .....	447-5924
Keene .....	352-1904
Laconia .....	524-3960
Lebanon .....	448-6340
Littleton .....	444-2971
Manchester ...	627-7841
Nashua .....	882-5177
Portsmouth ....	436-3702
Salem .....	893-9185
Somersworth ..	742-3600

**US Department of Labor Boston Regional Office:**  
Bureau of Labor Statistics Information ..... (617) 565-2327

**About This Publication:**

*Economic Conditions in New Hampshire* is published monthly in coordination with the Bureau of Labor Statistics and the Employment and Training Administration of the U.S. Department of Labor. NHES is an Equal Opportunity employer and complies with the Americans with Disabilities Act. Auxiliary aids and services are available upon request of individuals with disabilities. TDD ACCESS: RELAY NH 1-800-735-2964.

**To Order Publications:**

Visit our Web site at [www.nhes.state.nh.us/lmipage.htm](http://www.nhes.state.nh.us/lmipage.htm) ;  
call **(603) 228-4124**; or send a written request to the following address:

**ELMI Publications  
New Hampshire Employment Security  
32 South Main Street  
Concord, New Hampshire 03301-4857**

NH EMPLOYMENT SECURITY  
32 SOUTH MAIN STREET  
CONCORD NH 03301-4857

OFFICIAL BUSINESS

FORWARDING AND ADDRESS CORRECTION REQUESTED