

ECONOMIC CONDITIONS in New Hampshire



September 2000

Volume 100, Number 09

New Hampshire
Among Most Livable
States 2

New Hampshire
Snapshot
Released 3

Local Area
Unemployment
Statistics 5

Current
Employment
Statistics 6

For Additional
Information 8

New Hampshire Migration 1998-1999

In-migrants have larger incomes than out-migrants

According to the latest data from the Internal Revenue Service, over 20,500 people migrated out of New Hampshire in 1999, while more than 23,000 people moved in, a net gain of about 2,500. Those out-migrating had earned over \$903 million in total income and held a median income of \$23,918. In-migrants brought more than \$1.175 billion in total income and a median income of \$27,581.

More newcomers, 8,851, came from Massachusetts than from any other state. Likewise the Bay State attracted 6,085 people from here, the top destination for out-migrators. New Hampshire had a net gain in people from each of the New England states, but the exchanges with Maine and Rhode Island were nearly even. In the exchange with all New England states except Maine, in-migrants had a higher median income than out-migrants. Many people moved here from the same southern and west-

ern states that attracted New Hampshire residents. Florida gained 2,008 people from New Hampshire making it the second most popular destination for people leaving the state. New Hampshire attracted 1,413 people from Florida.

New Hampshire gained people from every state and the District of Columbia, while out-migrants went to all but two states, North Dakota and South Dakota. The Granite State received the fewest in-migrants from these same two states, 22 and 13, respectively.

While the arrivals to New Hampshire had a larger median income versus the people who left for other states, the median income of the in-migrants (\$27,581) was less than the median income level for all New Hampshire residents (\$31,337).

Henry Goode

NH In-Migration - TOP 10 States

State	Number	Total Income (000s)	Median Income
Massachusetts	8,851	\$479,278	\$33,103
Maine	2,020	\$71,088	\$20,112
Vermont	1,417	\$48,982	\$20,160
Florida	1,413	\$47,235	\$18,749
New York	1,297	\$61,890	\$26,353
Connecticut	876	\$50,657	\$31,124
California	796	\$51,083	\$27,349
New Jersey	504	\$41,667	\$35,184
Pennsylvania	500	\$40,412	\$29,838
Texas	448	\$27,947	\$32,272
Rhode Island (13th)	334	\$14,276	\$25,516
Totals for NH	23,125	\$1,175,404	\$27,581

NH Out-Migration - TOP 10 States

State	Number	Total Income (000s)	Median Income
Massachusetts	6,085	\$263,480	\$27,985
Florida	2,008	\$92,565	\$22,418
Maine	1,944	\$68,755	\$22,292
Vermont	1,262	\$39,174	\$19,031
New York	942	\$40,298	\$22,135
California	941	\$48,236	\$19,719
Connecticut	611	\$28,161	\$25,488
Virginia	587	\$27,620	\$26,922
North Carolina	525	\$22,479	\$21,419
Texas	459	\$32,571	\$26,209
Rhode Island (16th)	294	\$11,430	\$23,268
Totals for NH	20,539	\$903,700	\$23,918

Published by the Economic and
Labor Market Information Bureau



New Hampshire Among Most Livable States

State ranked fifth in the nation

New Hampshire was rated number one in New England and fifth among all states in a recent national ranking of most livable factors. According to Morgan Quitno Press, a Lawrence, Kansas, based independent research and publishing company, Minnesota ranked number one overall for the fourth consecutive year.

The Most Livable State award is based on 43 factors comparing states in more than 550 categories. The award recognizes a state for its high quality of life. According to Scott Morgan, President of Morgan Quitno Press: "We issue the award every year because it tells an interesting story about life and government in the 50 United States. It is based on statistical indicators that reflect the kind of lifestyle that most Americans agree is positive - affordable housing, safe streets, good employment opportunities, a strong education system and a healthy state economy."

New Hampshire has placed well in the ten-year history of these rankings. Previously, New Hampshire was named Most Livable State in 1991, 1993, 1994, and placed second in 1992 and 1997. In the 2000 ranking, New Hampshire is the only state east of the Mississippi in the top five and, with Massachusetts, one of two New England States in the top ten.

New Hampshire achieved the top score in six factors, more than any other state. No other state, including number one ranked Minnesota, took a top score in

more than two factors. New Hampshire did have the lowest ranking in one factor, electricity prices.

New Hampshire scored best in the nation in the following indicators:

- ❖ Crime rate
- ❖ State and local taxes as a percent of personal income
- ❖ Infant mortality rate
- ❖ Poverty rate
- ❖ Percent change in per capita gross state product
- ❖ Job growth

The Granite State was among the best five states in:

- ❖ Unemployment rate (2)
- ❖ Percent of births to teenage mothers (2)
- ❖ Percent of households receiving food stamps (2)
- ❖ Births of low birthweight as a percent of all births (3)
- ❖ Highway fatality rate (3)
- ❖ State prisoner incarceration rate (4)
- ❖ Percent of nonfarm employees in government (4)

New Hampshire rated among the lowest five states in:

- ❖ Electricity prices (50)
- ❖ State and local government spending for welfare programs as a percent of all spending (49)
- ❖ Fatalities in alcohol-related crashes as a percent of all highway fatalities (47)

Henry Goode

Most Livable State Ranking Based on 43 Factors

State	National Ranking (1=best)									
	2000	1999	1998	1997	1996	1995	1994	1993	1992	1991
NH	5	8	11	2	7	8	1	1	2	1
CT	13	11	12	11	15	12	9	17	11	16
ME	15	15	26	16	16	16	18	13	17	9
MA	10	9	7	7	12	15	11	20	22	24
RI	31	34	31	28	30	32	30	37	34	32
VT	12	14	17	13	8	17	8	11	9	6

Unemployment Compensation Claims Activity

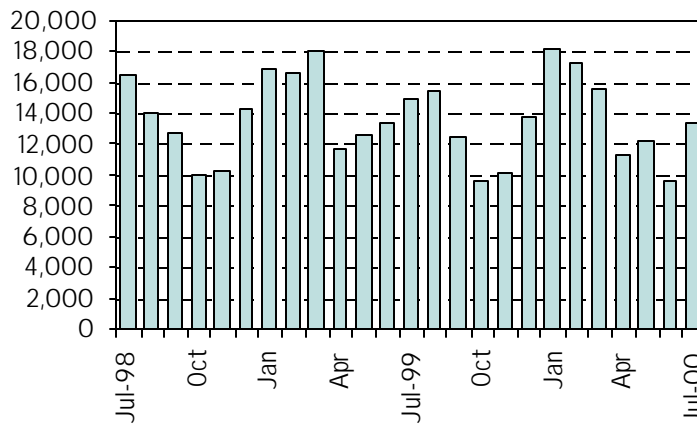
Total Regular Unemployment Compensation Programs:	Jul-00	Jun-00	Jul-99	Change from Previous			
				Month		Year	
				Net Percent	Net Percent	Net Percent	Net Percent
Initial Claims	2,990	2,132	3,459	858	40.2%	(469)	-13.6%
Continued Weeks	13,427	9,583	15,392	3,844	40.1%	(1,965)	-12.8%

Claims Activity

Unemployment Compensation Fund, July 2000

Unemployment compensation fund balance at the end of July:	\$318,373,995.75
Average payment for a week of total unemployment:	\$207.97
Net benefits paid:	\$3,323,210.34
Net contributions received during the month:	\$2,429,105.46
Interest Received:	\$0.00

Trust Fund



Continued Weeks Claimed
July-98 through July-00

July 2000 registered fewest continued claims for a July since 1988.

Jul-00	Jun-00	Jul-99	change from previous	
			Month	Year
172.6	172.3	166.7	0.2%	3.5%

United States
All Urban Areas (CPI-U)
(1982-1984=100)

Consumer Price Index

New Look!

New Hampshire Snapshot, A Glimpse of the Labor Market in New Hampshire

New Hampshire Snapshot has a new look. Don't let that fool you though, it is still packed with interesting information. Some of what you will find includes: What was New Hampshire's population in 1998? What were the total retail sales for 1998 in each county? How many jobs have been added statewide in the past five years? How much has the average weekly wage increased since 1995? New Hampshire Snapshot has all this and more.

You will also find: 1999 unemployment rate, civilian labor force, covered wage data, covered employment data, covered manufacturing, and services data by county, as well as statewide.

In addition to a new look, we've added a new section on the reverse, Hot Points. Be sure to check it out.

This and other ELMI publications are available by calling (603) 228-4124; by accessing our Web site at www.nhes.state.nh.us/lmipage.htm; or by sending a request to:

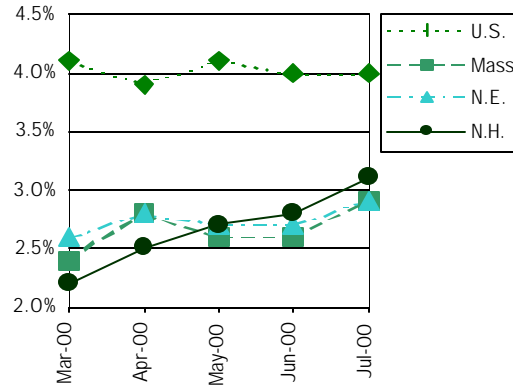
ELMI Publications
New Hampshire Employment Security
32 South Main Street
Concord, NH 03301 - 4857

New Hampshire Snapshot is released



N.H. and U.S. Seasonally Adjusted Unemployment Rate

None of the New England states saw an over-the-month decrease in its unemployment rate.



Unemployment Rates by Region

	preliminary Jul-00	revised Jun-00	Jul-99
United States	4.0%	4.0%	4.3%
Northeast	3.7%	3.8%	4.4%
New England	2.9%	2.7%	3.3%
Connecticut	2.4%	2.3%	3.1%
Maine	3.4%	3.4%	4.0%
Massachusetts	2.9%	2.6%	3.2%
New Hampshire	3.1%	2.8%	2.6%
Rhode Island	3.9%	3.9%	4.2%
Vermont	2.7%	2.6%	3.2%
Mid Atlantic	4.0%	4.1%	4.8%
New Jersey	3.7%	3.4%	4.7%
New York	4.2%	4.5%	5.2%

Labor Force Estimates

By Place of Residence

	New Hampshire	Mar-00	Apr-00	May-00	revised Jun-00	preliminary Jul-00
Unemployment Rate		2.2%	2.5%	2.7%	2.8%	3.1%
Civilian Labor Force		678,970	680,630	681,760	683,300	687,110
Number Employed		664,360	663,920	663,360	664,090	666,090
Number Unemployed		14,610	16,710	18,400	19,210	21,020
United States (in thousands)						
Unemployment Rate		4.1%	3.9%	4.1%	4.0%	4.0%
Civilian Labor Force		140,867	141,230	140,489	140,672	140,399
Number Employed		135,159	135,706	134,715	135,179	134,749
Number Unemployed		5,708	5,524	5,774	5,583	5,650

Seasonally Adjusted Nonfarm Employment

By Place of Establishment

Industry	Mar-00	Apr-00	May-00	revised Jun-00	preliminary Jul-00
TOTAL ALL INDUSTRIES	612,400	613,200	611,500	611,800	611,700
Mining*	400	400	400	500	500
Construction	26,300	26,200	26,000	26,000	26,200
Manufacturing	104,600	105,100	105,300	105,500	106,000
Durable Goods	74,500	74,800	75,100	75,300	75,800
Nondurable Goods	30,100	30,300	30,200	30,200	30,200
Transportation and Public Utilities	21,800	21,700	21,700	21,000	21,000
Trade	162,900	162,800	161,000	161,800	161,400
Wholesale Trade	32,200	32,100	32,000	31,900	32,000
Retail Trade	130,700	130,700	129,000	129,900	129,400
Finance, Insurance, and Real Estate	32,800	32,800	33,000	32,800	32,800
Services	180,200	180,700	179,800	179,600	180,200
Government	83,400	83,500	84,300	84,600	83,600

* Since N.H. mining employment exhibits no clear seasonal pattern, these estimates are not adjusted.

Labor Force Estimates

New Hampshire	Jul-00	Jun-00	Jul-99
Number of Workers	preliminary	revised	
Total Civilian Labor Force	700,960	693,170	679,960
Employed	681,860	673,630	664,550
Unemployed	19,100	19,540	15,410
Unemployment Rate (% of labor force)	2.7%	2.8%	2.3%

Unemployment Rates by Area

	Jul-00	Jun-00	Jul-99
	preliminary	revised	

U.S. and Regional States

United States	4.2%	4.2%	4.5%
Northeast	3.9%	3.8%	4.6%
New England	2.8%	2.8%	3.2%
Connecticut	2.5%	2.6%	3.2%
Maine	2.7%	3.3%	3.2%
Massachusetts	2.9%	2.7%	3.3%
New Hampshire	2.7%	2.8%	2.3%
Rhode Island	3.7%	3.6%	4.0%
Vermont	2.5%	2.4%	2.9%
Mid Atlantic	4.3%	4.1%	5.1%
New Jersey	4.2%	3.6%	5.3%
New York	4.4%	4.3%	5.3%
Pennsylvania	4.3%	4.2%	4.6%

Labor Market Areas (NH Portions Only)

Berlin LMA	3.4%	3.8%	2.1%
Seabrook-South Hampton, NH			
Portion Boston MA-NH PMSA	4.2%	4.2%	4.2%
Claremont LMA	2.1%	2.3%	2.3%
Colebrook LMA	3.3%	3.4%	1.8%
Concord LMA	2.4%	2.3%	1.8%
Conway LMA	2.3%	3.0%	1.6%
NH Portion Hartford-Lebanon			
VT-NH LMA	1.4%	1.6%	0.9%
NH Portion Keene-Brattleboro			
NH-VT LMA	3.0%	3.2%	2.1%
Laconia LMA	1.9%	2.3%	1.5%
Lancaster LMA	2.7%	3.8%	2.0%
Salem-Derry, NH Portion Lawrence			
MA-NH PMSA	4.3%	4.2%	3.5%
Littleton LMA	2.2%	2.4%	1.7%
Pelham, NH Portion Lowell MA-NH			
PMSA	3.7%	3.7%	3.8%
Manchester LMA	2.2%	2.6%	1.8%
Nashua LMA	2.6%	3.0%	2.4%
Peterborough LMA	2.9%	3.3%	2.2%
Plymouth LMA	1.6%	2.0%	1.5%
NH Portion Portsmouth-Rochester,			
NH-ME PMSA	3.1%	2.4%	2.3%

Counties

Belknap	2.0%	2.4%	1.5%
Carroll	2.3%	2.9%	1.5%
Cheshire	3.2%	3.4%	2.2%
Coos	3.2%	3.7%	2.0%
Grafton	1.6%	1.9%	1.3%
Hillsborough	2.5%	2.8%	2.2%
Merrimack	2.2%	2.3%	1.7%
Rockingham	3.5%	3.4%	2.9%
Strafford	3.4%	2.6%	2.3%
Sullivan	2.1%	2.0%	2.4%

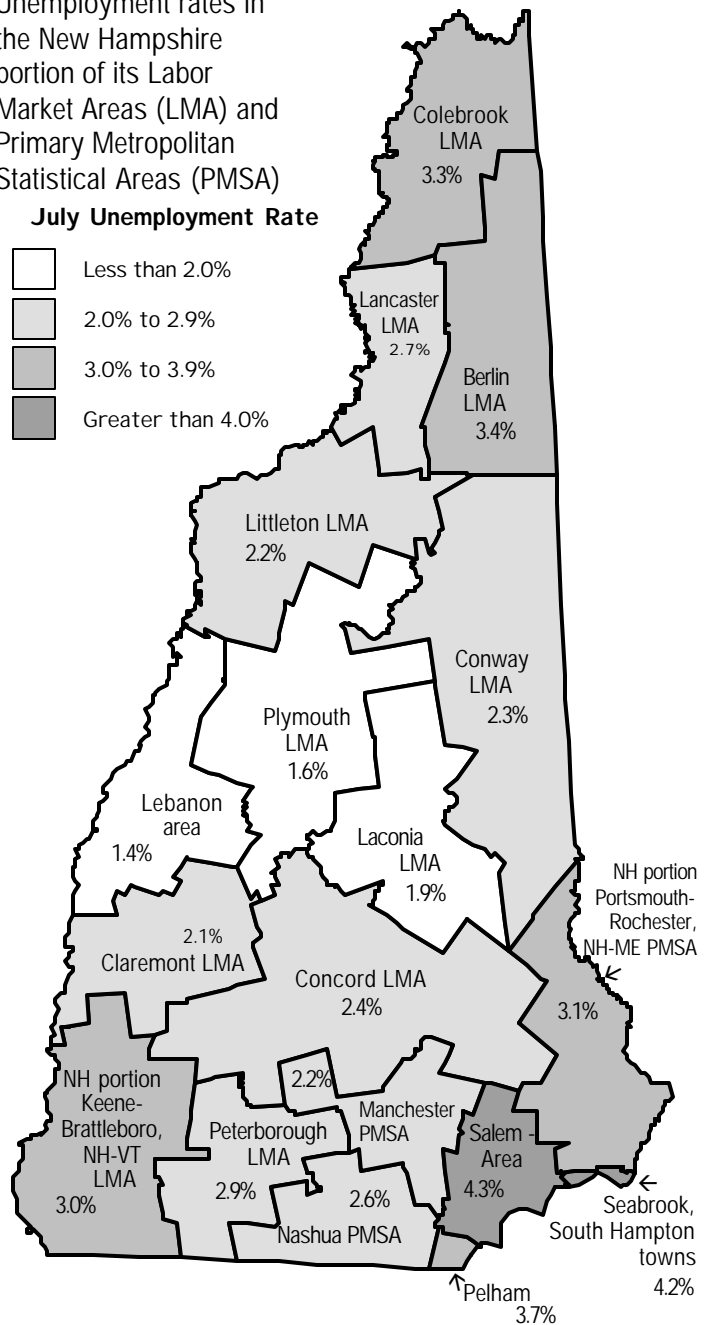
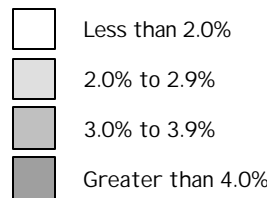
Local Area Unemployment Statistics (LAUS)

Not Seasonally
Adjusted

By Place of Residence

Unemployment rates in the New Hampshire portion of its Labor Market Areas (LMA) and Primary Metropolitan Statistical Areas (PMSA)

July Unemployment Rate



Vacation shutdowns in schools and in Manufacturing propelled over-the-month losses. Government and Services led over-the-year gains.

More detailed industry information is available at our Web site

Monthly Not Seasonally Adjusted New Hampshire Nonfarm Wage and Salary Employment

Current Employment Statistics Employment by Industry - Number of Jobs by place of establishment	Number of Jobs			Net Change	
	Jul-00 (preliminary)	Jun-00 (revised)	Jul-99	From Previous	
				Month	Year
Total All Industries	614,200	620,900	607,600	-6,700	6,600
Private Employment Total	538,300	537,900	534,300	400	4,000
Mining	500	500	500	0	0
Construction	27,600	27,200	26,000	400	1,600
Manufacturing	104,500	106,300	105,100	-1,800	-600
Durable Goods Total	74,800	75,900	75,400	-1,100	-600
Nondurable Goods Total	29,700	30,400	29,700	-700	0
Transportation & Public Utilities	20,900	21,800	21,000	-900	-100
Trade Total	166,300	165,200	165,300	1,100	1,000
Wholesale Trade	32,600	32,500	32,300	100	300
Retail Trade	133,700	132,700	133,000	1,000	700
Finance, Insurance, & Real Estate	33,100	33,200	33,200	-100	-100
Services	185,400	183,700	183,200	1,700	2,200
Government Total	75,900	83,000	73,300	-7,100	2,600

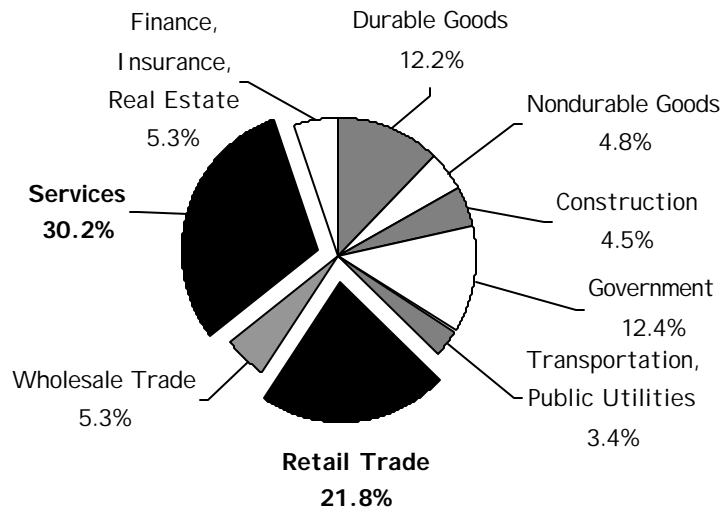
Note: Totals are rounded to hundreds

Losses in Retail trade brought Manchester area private employment down over-the-month.

Current Employment Statistics (CES) Manchester PMSA

Employment by Industry Number of jobs by place of establishment	Number of Jobs			Change	
	Jul-00 (preliminary)	Jun-00 (revised)	Jul-99	from previous:	
				Month	Year
Total All Industries	104,000	105,500	102,200	-1,500	1,800
Private Employment Total	93,700	94,200	92,300	-500	1,400
Construction & Mining	5,500	5,300	5,300	200	200
Manufacturing	15,300	15,400	14,800	-100	500
Durable Goods	10,700	10,800	10,200	-100	500
Transportation & Public Utilities	6,500	6,500	6,000	0	500
Trade Total	25,400	25,800	24,800	-400	600
Wholesale Trade	6,500	6,500	6,600	0	-100
Retail Trade	18,900	19,300	18,200	-400	700
Finance, Insurance, & Real Estate	7,600	7,600	8,000	0	-400
Services	33,400	33,600	33,400	-200	0
Government Total	10,300	11,300	9,900	-1,000	400

Divisional Percentages of Nonfarm Employment



**Current Employment Statistics
Nashua PMSA**

Employment by Industry Number of jobs by place of establishment	Jul-00	Jun-00	Jul-99	from previous:	
	(preliminary)	(revised)		Month	Year
Total All Industries	95,700	97,500	95,100	-1,800	600
Private Employment Total	87,800	88,500	87,800	-700	0
Construction & Mining	3,600	3,600	3,200	0	400
Manufacturing	27,500	27,800	27,200	-300	300
Durable Goods	21,500	21,700	21,100	-200	400
Nondurable Goods	6,000	6,100	6,100	-100	-100
Transportation & Public Utilities	3,100	3,200	3,000	-100	100
Trade Total	24,600	24,500	24,800	100	-200
Wholesale Trade	4,600	4,600	4,700	0	-100
Retail Trade	20,000	19,900	20,100	100	-100
Finance, Insurance, & Real Estate	4,400	4,500	5,200	-100	-800
Services	24,600	24,900	24,400	-300	200
Government Total	7,900	9,000	7,300	-1,100	600

Decreases in Services and Manufacturing led Nashua area private employment downward over-the-month.

**Current Employment Statistics
Portsmouth-Rochester, NH-ME PMSA**

Employment by Industry Number of jobs by place of establishment	Jul-00	Jun-00	Jul-99	from previous:	
	(preliminary)	(revised)		Month	Year
Total All Industries	122,900	123,200	120,600	-300	2,300
Private Employment Total	102,700	102,200	101,000	500	1,700
Construction & Mining	4,300	4,200	4,400	100	-100
Manufacturing	18,000	18,500	17,600	-500	400
Durable Goods	11,400	11,800	11,100	-400	300
Nondurable Goods	6,600	6,700	6,500	-100	100
Transportation & Public Utilities	3,700	3,700	3,800	0	-100
Trade Total	35,300	34,900	34,200	400	1,100
Wholesale Trade	6,000	6,000	5,800	0	200
Retail Trade	29,300	28,900	28,400	400	900
Finance, Insurance, & Real Estate	6,600	6,700	6,600	-100	0
Services	34,800	34,200	34,400	600	400
Government Total	20,200	21,000	19,600	-800	600

Over-the-month Manufacturing losses were offset by Services and Trade gains in the Portsmouth area.

Average Earnings and Hours of Production Workers in Manufacturing

Industry	Average Weekly Earnings			Average Weekly Hours			Average Hourly Earnings		
	Jul-00 (prelim.)	Jun-00 (revised)	Jul-99	Jul-00 (prelim.)	Jun-00 (revised)	Jul-99	Jul-00 (prelim.)	Jun-00 (revised)	Jul-99
NEW HAMPSHIRE									
All Manufacturing	\$540.42	\$546.22	\$535.99	40.3	41.1	40.3	\$13.41	\$13.29	\$13.30
Durable Goods	540.29	544.48	541.60	40.9	41.5	40.6	13.21	13.12	13.34
Nondurable Goods	541.10	546.63	525.76	38.9	39.9	39.8	13.91	13.70	13.21
MANCHESTER PMSA									
All Manufacturing	\$571.42	\$594.69	\$563.96	39.3	40.4	39.3	\$14.54	\$14.72	\$14.35
Durable Goods	596.30	603.02	591.63	40.4	40.8	41.0	14.76	14.78	14.43
NASHUA PMSA									
All Manufacturing	\$557.59	\$562.79	\$585.76	40.7	41.2	41.9	\$13.70	\$13.66	\$13.98
Durable Goods	528.12	537.31	570.63	40.5	41.3	42.3	13.04	13.01	13.49
Nondurable Goods	651.44	643.01	635.33	41.1	40.8	40.7	15.85	15.76	15.61
PORTSMOUTH-ROCHESTER, NH-MA PMSA									
All Manufacturing	\$548.73	\$563.57	\$537.03	40.2	41.5	40.5	\$13.65	\$13.58	\$13.26
Durable Goods	605.49	599.66	580.58	41.5	42.2	40.6	14.59	14.21	14.30
Nondurable Goods	444.15	495.26	463.10	37.8	40.2	40.2	11.75	12.32	11.52

Average weekly hours and average hourly earnings remained remarkably constant both over-the-month and over-the-year.

For Additional Information



New Hampshire Employment Security
Economic and Labor Market Information Bureau:

General Information 228-4124
 Research Unit 228-4173
 Economist 228-4122
 Covered Employment and Wages (ES-202) 228-4177
 Current Employment Statistics (790) 228-4127
 Local Area Unemployment Statistics 228-4175
 Mass Layoff Statistics (MLS) 228-4175
 Occupational Employment Statistics 229-4315

Internet address: www.nhes.state.nh.us/lmipage.htm

New Hampshire
Employment Security
Local Offices:

Berlin 752-5500
 Claremont 543-3111
 Concord 228-4100
 Conway 447-5924
 Keene 352-1904
 Laconia 524-3960
 Lebanon 448-6340
 Littleton 444-2971
 Manchester ... 627-7841
 Nashua 882-5177
 Portsmouth 436-3702
 Salem 893-9185
 Somersworth .. 742-3600

US Department of Labor Boston Regional Office:
 Bureau of Labor Statistics Information (617) 565-2327

About This Publication:
Economic Conditions in New Hampshire is published monthly in coordination with the Bureau of Labor Statistics and the Employment and Training Administration of the U.S. Department of Labor. NHES is an Equal Opportunity employer and complies with the Americans with Disabilities Act. Auxiliary aids and services are available upon request of individuals with disabilities. TDD ACCESS: RELAY NH 1-800-735-2964.

To Order Publications:
 Visit our Web site at www.nhes.state.nh.us/lmipage.htm ;
 call **(603) 228-4124**; or send a written request to the following address:

**ELMI Publications
 New Hampshire Employment Security
 32 South Main Street
 Concord, New Hampshire 03301-4857**

NH EMPLOYMENT SECURITY
 32 SOUTH MAIN STREET
 CONCORD NH 03301-4857

OFFICIAL BUSINESS

FORWARDING AND ADDRESS CORRECTION REQUESTED