

# ECONOMIC CONDITIONS in New Hampshire



August 2000

Volume 100, Number 08

Introducing  
STAT ..... 2

e-LMI  
on the Web ..... 3

Local Area  
Unemployment  
Statistics ..... 5

Current  
Employment  
Statistics ..... 6

For Additional  
Information ..... 8

## 160,000 Worked Less Than 35 Hours Per Week in 1998

Employment was 633,000

**O**n average, about one-fourth of all employees worked less than 35 hours per week from 1994 to 1998. Approximately one-fifth (110,000) of them are actually considered part-time employees because their standard work week is less than 35 hours. There are eight percent (50,200) of the total who are considered full-time employees because their standard work week is more than 35 hours.

So, why did these people work less than 35 hours? The reasons are reported by the Bureau of Labor Statistics in their *Geographic Profile of Employment and Unemployment*.<sup>1</sup> Both part- and full-time employees were reported in only two of the same categories, "other reasons" and "slack work or business conditions."

Reason	Usually Work Part-time	Five-Year Average
Other family or personal obligations <i>Included such things as a sick child, child's field trip, or working around the house, that led them to only work part-time.</i>	31,400	
In school or training	28,200	
Other reasons <i>Included such things as seasonal work, medical limitations, and full-time work week being less than 35 hours. The total of 19,000 for 1998 showed no change over that of 1994.</i>	18,800	
Retired or had social security limits on their earnings <i>This category showed no change in 1998 from the 12,000 reported in 1994. The only other New England state to register no change was Rhode Island.</i>	12,600	
Could only find part-time work <i>In 1998 there was a 50 percent decline in this category from the 10,000 reported in 1994.</i>	7,400	
Slack work or business conditions <i>In 1998 there were 5,000 fewer in this category than the 9,000 in 1994. As a percentage of the July 1999 population of 1,201,134, this decrease of 0.42 percent was the largest decrease of the six New England states.</i>	6,200	
Childcare problems <i>There were 1,000 fewer workers in this category in 1998 than the 5,000 in 1994.</i>	5,000	

Published by the Economic and  
Labor Market Information Bureau

*Employment*  
**SECURITY**

Continued on page 2

## Part-Time Workers

Continued from page 1

Reason	Usually Work Full-time	Five-Year Average
Other reasons .....	17,000	
<i>Included such things as childcare problems, labor dispute, and civic or military duty. The total for 1998 was 3,000 under the 18,000 of 1994.</i>		
<i>Using the five-year average from 1994 to 1998 and excluding the "other reasons" category for persons working 1 to 34 hours, the most cited reason for working less than full-time hours by people who usually work full-time was taking a:</i>		
Vacation or personal day. ....	16,800	
<i>Using the five-year average from 1994 to 1998 and excluding the "other reasons" category for persons working 1 to 34 hours, the second most given reason for not being at work over 34 hours was taking a day off for a:</i>		
Holiday, whether legal or religious. ....	9,000	
Slack work or business conditions .....	4,200	
<i>In 1998 there were 2,000 fewer in this category than the 5,000 in 1994. As a percentage of July 1999 population, this was a decrease of 0.17 percent tying Vermont with the second largest decrease of the six New England states (Rhode Island-0.20 percent).</i>		
Weather related curtailments .....	3,200	

In 1998 the number of persons working 1 to 34 hours because of a holiday, legal or religious, was a sizeable 22,000. This is a substantial increase over the 7,000 reported in 1994. This spike is likely explained by the calendar cycle where additional holidays fall within the reporting period. All other states also experienced this same type of jump. As a percentage of July 1999 population, New Hampshire's total increased by

1.25 percent. All other New England states increased by less with the exception of Massachusetts, which matched our increase as a percentage of population.

*Rick Ricker*

<sup>1</sup> United States Department of Labor. Bureau of Labor Statistics. Geographic Profile of Employment and Unemployment. 1994-1998, published 1995-1999.

**Introducing!** **New Hampshire Employment Security ELMI Bureau releases new resource paper**

# STAT

The Labor Market Information Bureau recently published and distributed a new publication, *STAT*. It will be published on a regular basis and cover singular topical interest items. The first issue just released covers Old Age, Survivors, and Disability Insurance (OASDI), known to many of us simply as Social Security.

"What it is and where it goes" is an apt subtitle for this first paper as it covers several different areas of the Social Security program as well as the Supplemental Security Income (SSI) program. You can read about the distribution of OASDI by county and about benefits paid to children. You will even learn a little about critical dates facing the Social Security Trust Funds.

Finally, do you know what the lowest possible social security number ever issued was? Read *STAT*.

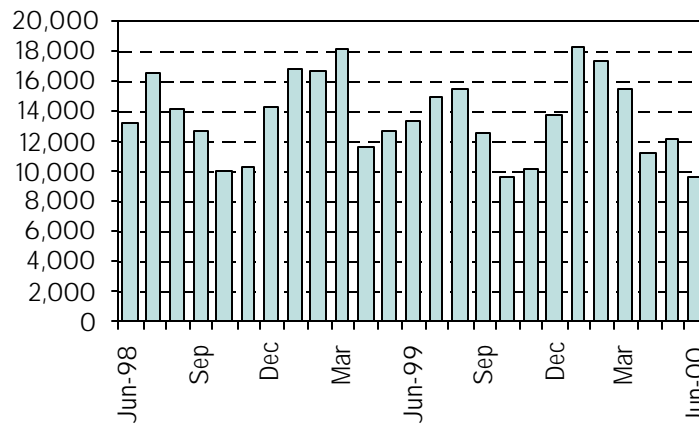
As with nearly all of our publications, *STAT* can be found at our Web site: [www.nhes.state.nh.us/lmipage.htm](http://www.nhes.state.nh.us/lmipage.htm)

### Unemployment Compensation Claims Activity

Total Regular Unemployment Compensation Programs:				Change from Previous			
	Jun-00	May-00	Jun-99	Month		Year	
				Net Percent	Net Percent	Net Percent	Net Percent
Initial Claims	2,132	1,682	2,895	450	26.8%	(763)	-26.4%
Continued Weeks	9,583	12,125	13,319	(2,542)	-21.0%	(3,736)	-28.1%

### Unemployment Compensation Fund, June 2000

Unemployment compensation fund balance at the end of June:	\$319,268,100.63
Average payment for a week of total unemployment:	\$218.48
Net benefits paid:	\$1,488,539.42
Net contributions received during the month:	\$168,885.36
Interest Received:	\$0.00



Claims Activity

Trust Fund

Continued Weeks Claimed  
June-98 through June-00

For the first time since 1997, continued claims declined in June from May.

Jun-00	May-00	Jun-99	change from previous	
			Month	Year
172.3	171.3	166.2	0.6%	3.7%

United States  
All Urban Areas (CPI-U)  
(1982-1984=100)

Consumer Price Index

### New Hampshire Commuting Patterns - 1990 U.S. Census now available on the Web

Where do residents go to perform their daily job? Where do employers find their workers? Every city and town has two work force elements — residents who work and employers who offer jobs. *Commuting Patterns in New Hampshire* relates these two components for all New Hampshire communities. Planners, developers, employers, economists, basically all decision-makers need this information. *Commuting Patterns* is a product of the Decennial Census. The latest data available is from the 1990 census and was first published in 1994.

The U.S. Census Bureau recently released its timetable for releases of 2000 census-based data. Population, population over 18 (voters), and race including Hispanic are to be released by April 2001. Next, later in 2001, will be all age and race, plus selected population and housing characteristics. Additional data will be forthcoming throughout 2002 and 2003. Commuting information, about the last item on the agenda, will be available in 2004.

*Commuting Patterns* is now available at our Web site: [www.nhes.state.nh.us/lmipage.htm](http://www.nhes.state.nh.us/lmipage.htm).

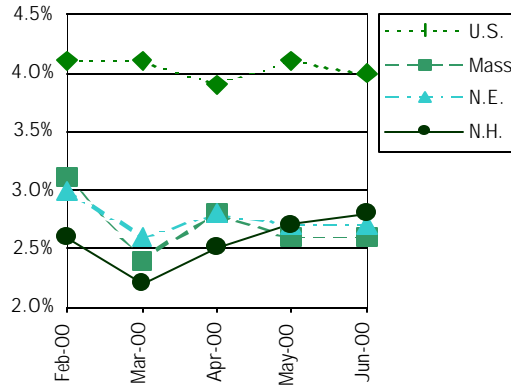
### e-LMI

New Hampshire Labor Market Information on the Web



## N.H. and U.S. Seasonally Adjusted Unemployment Rate

While all the other Northeast Region states experienced considerable over-the-year decreases, New Hampshire's rate remained the same.



### Unemployment Rates by Region

	preliminary Jun-00	revised May-00	Jun-99
United States	4.0%	4.1%	4.3%
Northeast	3.8%	3.8%	4.5%
New England	2.7%	2.7%	3.4%
Connecticut	2.3%	2.4%	3.3%
Maine	3.4%	3.5%	4.5%
Massachusetts	2.6%	2.6%	3.2%
New Hampshire	2.8%	2.7%	2.8%
Rhode Island	3.9%	4.0%	4.3%
Vermont	2.6%	2.5%	3.1%
Mid Atlantic	4.1%	4.2%	4.9%
New Jersey	3.4%	3.8%	4.8%
New York	4.5%	4.6%	5.3%

## Labor Force Estimates

By Place of Residence

	New Hampshire	Feb-00	Mar-00	Apr-00	revised May-00	preliminary Jun-00
Unemployment Rate		2.6%	2.2%	2.5%	2.7%	2.8%
Civilian Labor Force		683,430	678,970	680,630	681,760	683,300
Number Employed		665,920	664,360	663,920	663,360	664,090
Number Unemployed		17,510	14,610	16,710	18,400	19,210
United States (in thousands)						
Unemployment Rate		4.1%	4.1%	3.9%	4.1%	4.0%
Civilian Labor Force		141,165	140,867	141,230	140,489	140,672
Number Employed		135,362	135,159	135,706	134,715	135,179
Number Unemployed		5,804	5,708	5,524	5,774	5,583

## Seasonally Adjusted Nonfarm Employment

By Place of Establishment

Industry	Feb-00	Mar-00	Apr-00	revised May-00	preliminary Jun-00
TOTAL ALL INDUSTRIES	612,400	612,400	613,200	611,500	610,100
Mining*	300	400	400	400	500
Construction	26,300	26,300	26,200	26,000	25,900
Manufacturing	105,300	104,600	105,100	105,300	105,100
Durable Goods	75,300	74,500	74,800	75,100	75,000
Nondurable Goods	30,000	30,100	30,300	30,200	30,100
Transportation and Public Utilities	21,800	21,800	21,700	21,700	21,000
Trade	162,400	162,900	162,800	161,000	161,100
Wholesale Trade	32,300	32,200	32,100	32,000	31,900
Retail Trade	130,100	130,700	130,700	129,000	129,200
Finance, Insurance, and Real Estate	32,900	32,800	32,800	33,000	33,000
Services	180,000	180,200	180,700	179,800	178,800
Government	83,400	83,400	83,500	84,300	84,700

\* Since N.H. mining employment exhibits no clear seasonal pattern, these estimates are not adjusted.

### Labor Force Estimates

New Hampshire	Jun-00	May-00	Jun-99
Number of Workers	preliminary	revised	
Total Civilian Labor Force	691,890	680,230	673,750
Employed	672,630	663,160	655,250
Unemployed	19,260	17,070	18,500
Unemployment Rate (% of labor force)	2.8%	2.5%	2.7%

### Unemployment Rates by Area

	Jun-00	May-00	Jun-99
	preliminary	revised	

#### U.S. and Regional States

United States	4.2%	3.9%	4.5%
Northeast	3.7%	3.6%	4.5%
New England	2.8%	2.6%	3.4%
Connecticut	2.6%	2.5%	3.6%
Maine	3.3%	3.3%	4.3%
Massachusetts	2.7%	2.3%	3.3%
New Hampshire	2.8%	2.5%	2.7%
Rhode Island	3.6%	3.6%	3.9%
Vermont	2.3%	2.4%	2.8%
Mid Atlantic	4.1%	4.0%	4.9%
New Jersey	3.6%	3.6%	5.0%
New York	4.3%	4.3%	5.1%
Pennsylvania	4.2%	3.9%	4.5%

#### Labor Market Areas (NH Portions Only)

Berlin LMA	3.7%	5.3%	2.7%
Seabrook-South Hampton, NH			
Portion Boston MA-NH PMSA	4.2%	3.4%	4.8%
Claremont LMA	2.3%	2.1%	2.8%
Colebrook LMA	2.7%	7.8%	2.9%
Concord LMA	2.3%	1.9%	2.1%
Conway LMA	2.9%	2.7%	2.3%
NH Portion Hartford-Lebanon			
VT-NH LMA	1.7%	1.4%	1.3%
NH Portion Keene-Brattleboro			
NH-VT LMA	3.1%	2.4%	2.5%
Laconia LMA	2.3%	2.0%	2.1%
Lancaster LMA	3.6%	4.7%	2.8%
Salem-Derry, NH Portion Lawrence			
MA-NH PMSA	4.3%	3.7%	4.0%
Littleton LMA	2.0%	3.7%	2.3%
Pelham, NH Portion Lowell MA-NH			
PMSA	3.8%	3.4%	3.6%
Manchester LMA	2.7%	2.3%	2.4%
Nashua LMA	3.0%	2.6%	2.9%
Peterborough LMA	3.1%	2.6%	2.8%
Plymouth LMA	2.0%	2.5%	2.0%
NH Portion Portsmouth-Rochester,			
NH-ME PMSA	2.2%	2.0%	2.2%

#### Counties

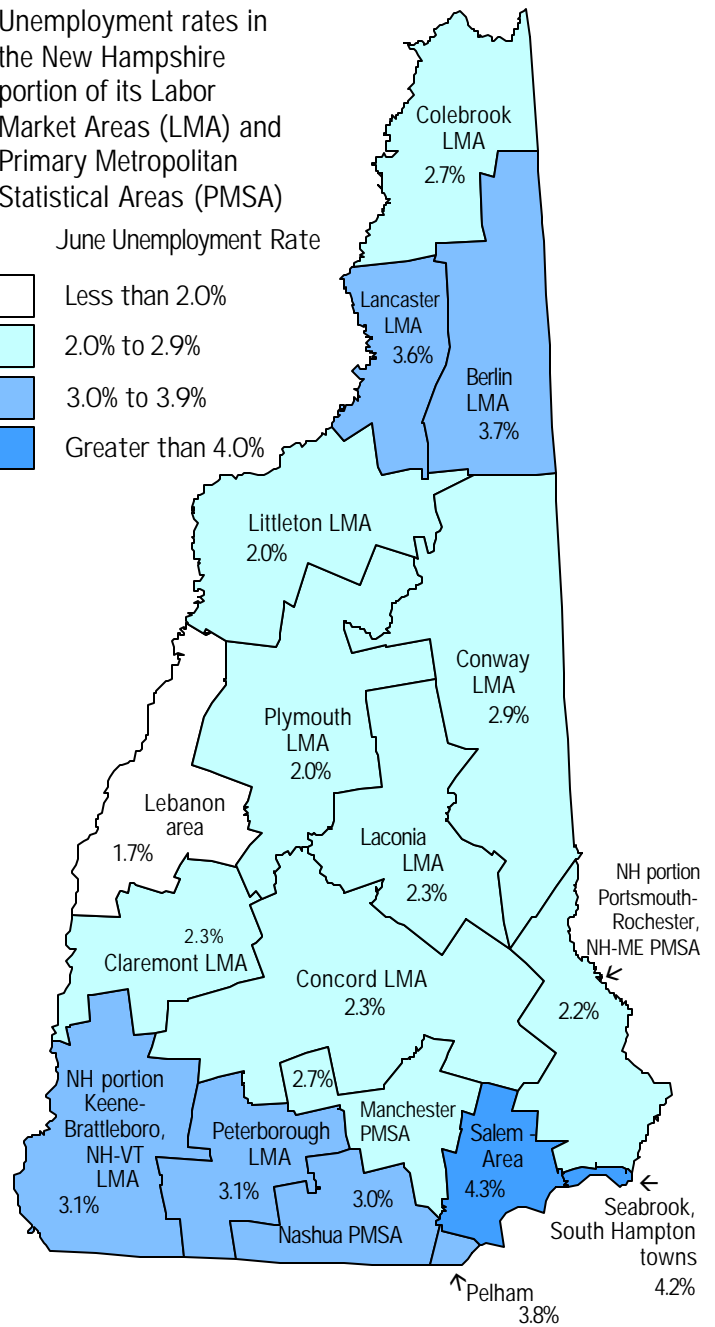
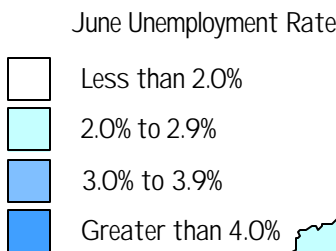
Belknap	2.4%	2.1%	2.1%
Carroll	2.9%	2.6%	2.2%
Cheshire	3.4%	2.6%	2.6%
Coos	3.4%	5.7%	2.8%
Grafton	1.8%	2.2%	1.7%
Hillsborough	2.8%	2.4%	2.7%
Merrimack	2.3%	2.0%	2.1%
Rockingham	3.4%	2.9%	3.2%
Strafford	2.4%	2.2%	2.2%
Sullivan	2.0%	2.0%	2.9%

## Local Area Unemployment Statistics (LAUS)

Not Seasonally  
Adjusted

By Place of Residence

Unemployment rates in the New Hampshire portion of its Labor Market Areas (LMA) and Primary Metropolitan Statistical Areas (PMSA)



June government employment began its typical summer slide as a result of school closings. Construction continued its strength both over-the-month and over-the-year.

More detailed industry information is available at our Web site

### Monthly Not Seasonally Adjusted New Hampshire Nonfarm Wage and Salary Employment

Current Employment Statistics Employment by Industry - Number of Jobs by place of establishment	Number of Jobs			Net Change	
	Jun-00 (preliminary)	May-00 (revised)	Jun-99	From Previous	
				Month	Year
Total All Industries	619,200	613,300	614,200	5,900	5,000
Private Employment Total	536,100	526,300	534,300	9,800	1,800
Mining	500	400	500	100	0
Construction	27,100	26,400	25,700	700	1,400
Manufacturing	105,900	105,700	107,300	200	-1,400
Durable Goods Total	75,600	75,300	76,600	300	-1,000
Nondurable Goods Total	30,300	30,400	30,700	-100	-400
Transportation & Public Utilities	21,800	21,800	21,800	0	0
Trade Total	164,500	160,000	163,600	4,500	900
Wholesale Trade	32,500	32,000	32,400	500	100
Retail Trade	132,000	128,000	131,200	4,000	800
Finance, Insurance, & Real Estate	33,400	32,900	33,100	500	300
Services	182,900	179,100	182,300	3,800	600
Government Total	83,100	87,000	79,900	-3,900	3,200

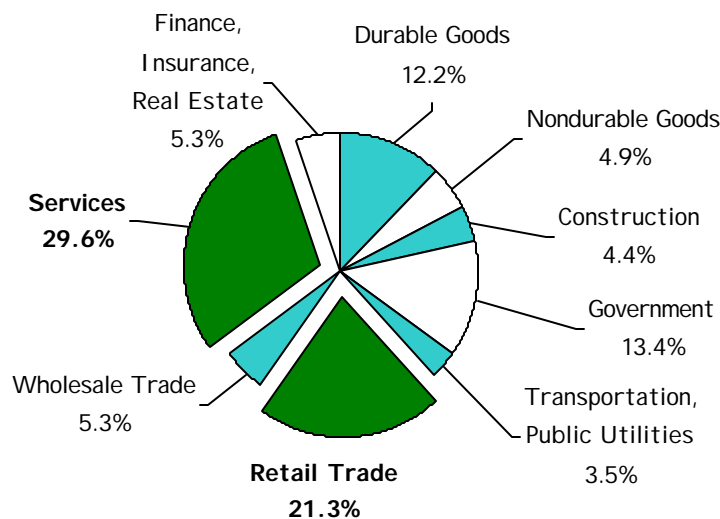
Note: Totals are rounded to hundreds

Goods producing industries in the Manchester PMSA pushed over-the-year gains. Only construction showed over-the-month strength.

### Current Employment Statistics (CES) Manchester PMSA

Employment by Industry Number of jobs by place of establishment	Number of Jobs			Change	
	Jun-00 (preliminary)	May-00 (revised)	Jun-99	from previous:	
				Month	Year
Total All Industries	105,200	105,200	103,900	0	1,300
Private Employment Total	93,600	93,800	92,900	-200	700
Construction & Mining	5,400	5,200	5,100	200	300
Manufacturing	15,200	15,300	14,700	-100	500
Durable Goods	10,700	10,700	10,100	0	600
Transportation & Public Utilities	6,400	6,400	6,200	0	200
Trade Total	25,600	26,000	25,100	-400	500
Wholesale Trade	6,500	6,700	6,800	-200	-300
Retail Trade	19,100	19,300	18,300	-200	800
Finance, Insurance, & Real Estate	7,600	7,600	8,000	0	-400
Services	33,400	33,300	33,800	100	-400
Government Total	11,600	11,400	11,000	200	600

Divisional Percentages of Nonfarm Employment



**Current Employment Statistics  
Nashua PMSA**

Employment by Industry Number of jobs by place of establishment	Jun-00 (preliminary)	May-00 (revised)	Jun-99	from previous:	
				Month	Year
Total All Industries	96,700	96,200	97,500	500	-800
Private Employment Total	87,500	87,200	88,900	300	-1,400
Construction & Mining	3,600	3,500	3,300	100	300
Manufacturing	27,700	27,400	27,700	300	0
Durable Goods	21,700	21,300	21,500	400	200
Nondurable Goods	6,000	6,100	6,200	-100	-200
Transportation & Public Utilities	3,200	3,300	3,100	-100	100
Trade Total	24,600	24,100	24,900	500	-300
Wholesale Trade	4,600	4,500	4,700	100	-100
Retail Trade	20,000	19,600	20,200	400	-200
Finance, Insurance, & Real Estate	4,400	4,400	5,300	0	-900
Services	24,000	24,500	24,600	-500	-600
Government Total	9,200	9,000	8,600	200	600

Trade gains offset Services losses in Nashua's service producing divisions. Increases among goods producers led to over-the-month gains.

**Current Employment Statistics  
Portsmouth-Rochester, NH-ME PMSA**

Employment by Industry Number of jobs by place of establishment	Jun-00 (preliminary)	May-00 (revised)	Jun-99	from previous:	
				Month	Year
Total All Industries	122,700	122,100	121,200	600	1,500
Private Employment Total	101,600	99,100	100,700	2,500	900
Construction & Mining	4,200	4,000	4,300	200	-100
Manufacturing	18,300	18,300	18,200	0	100
Durable Goods	11,700	11,700	11,500	0	200
Nondurable Goods	6,600	6,600	6,800	0	-200
Transportation & Public Utilities	3,800	3,800	3,900	0	-100
Trade Total	34,400	33,400	33,600	1,000	800
Wholesale Trade	6,000	6,000	5,800	0	200
Retail Trade	28,400	27,400	27,800	1,000	600
Finance, Insurance, & Real Estate	6,700	6,600	6,600	100	100
Services	34,200	33,000	34,000	1,200	200
Government Total	21,100	23,000	20,500	-1,900	600

Gains in Services and Retail trade more than made up for a decline in government jobs caused by school closings in the Portsmouth area.

**Average Earnings and Hours of Production Workers in Manufacturing**

Industry	Average Weekly Earnings			Average Weekly Hours			Average Hourly Earnings		
	Jun-00 (prelim.)	May-00 (revised)	Jun-99	Jun-00 (prelim.)	May-00 (revised)	Jun-99	Jun-00 (prelim.)	May-00 (revised)	Jun-99
<b>NEW HAMPSHIRE</b>									
All Manufacturing	\$547.04	\$541.52	\$536.42	41.1	40.9	41.2	\$13.31	\$13.24	\$13.02
Durable Goods	545.79	539.38	539.50	41.6	41.3	41.5	13.12	13.06	13.00
Nondurable Goods	549.42	549.53	528.43	39.9	40.2	40.4	13.77	13.67	13.08
<b>MANCHESTER PMSA</b>									
All Manufacturing	\$601.39	\$572.76	\$565.56	40.2	38.7	40.6	\$14.96	\$14.80	\$13.93
Durable Goods	611.74	568.33	577.46	41.7	38.9	41.1	14.67	14.61	14.05
<b>NASHUA PMSA</b>									
All Manufacturing	\$563.87	\$559.87	\$580.56	41.4	40.6	41.0	\$13.62	\$13.79	\$14.16
Durable Goods	536.90	535.61	560.88	41.3	40.7	41.0	13.00	13.16	13.68
Nondurable Goods	655.52	635.16	643.36	41.7	40.2	40.9	15.72	15.80	15.73
<b>PORTSMOUTH-ROCHESTER, NH-MA PMSA</b>									
All Manufacturing	\$572.00	\$574.60	\$528.21	41.6	42.5	40.6	\$13.75	\$13.52	\$13.01
Durable Goods	614.38	620.31	577.92	42.4	43.5	40.9	14.49	14.26	14.13
Nondurable Goods	492.43	488.01	444.89	40.1	40.6	39.9	12.28	12.02	11.15

Manchester's average weekly earnings jumped by nearly \$30 as both hours and earnings increased.

## For Additional Information



New Hampshire Employment Security  
Economic and Labor Market Information Bureau:

General Information .....	228-4124
Research Unit .....	228-4173
Economist .....	228-4122
Covered Employment and Wages (ES-202) .....	228-4177
Current Employment Statistics (790) .....	228-4127
Local Area Unemployment Statistics .....	228-4175
Mass Layoff Statistics (MLS) .....	228-4175
Occupational Employment Statistics .....	229-4315

**Internet address: [www.nhes.state.nh.us/lmipage.htm](http://www.nhes.state.nh.us/lmipage.htm)**

New Hampshire  
Employment Security  
Local Offices:

Berlin .....	752-5500
Claremont .....	543-3111
Concord .....	228-4100
Conway .....	447-5924
Keene .....	352-1904
Laconia .....	524-3960
Lebanon .....	448-6340
Littleton .....	444-2971
Manchester ...	627-7841
Nashua .....	882-5177
Portsmouth ....	436-3702
Salem .....	893-9185
Somersworth ..	742-3600

**US Department of Labor Boston Regional Office:**  
Bureau of Labor Statistics Information ..... (617) 565-2327

**About This Publication:**  
*Economic Conditions in New Hampshire* is published monthly in coordination with the Bureau of Labor Statistics and the Employment and Training Administration of the U.S. Department of Labor. NHES is an Equal Opportunity employer and complies with the Americans with Disabilities Act. Auxiliary aids and services are available upon request of individuals with disabilities. TDD ACCESS: RELAY NH 1-800-735-2964.

**To Order Publications:**  
Visit our Web site at [www.nhes.state.nh.us/lmipage.htm](http://www.nhes.state.nh.us/lmipage.htm) ;  
call **(603) 228-4124**; or send a written request to the following address:

**ELMI Publications  
New Hampshire Employment Security  
32 South Main Street  
Concord, New Hampshire 03301-4857**

NH EMPLOYMENT SECURITY  
32 SOUTH MAIN STREET  
CONCORD NH 03301-4857

OFFICIAL BUSINESS

FORWARDING AND ADDRESS CORRECTION REQUESTED