

# New Hampshire Economic Conditions

June 2011

## New Hampshire Population: Where Do We Rank?

The 2010 Census population count for New Hampshire was 1,316,470, a 6.7 percent increase over the 2000 count of 1,235,786. This was a modest increase, and the lowest percent change for New Hampshire since 1940, when population increased by 5.6 percent over 1930. While total population continues to grow, the amount of growth has slowed sharply over the last three Censuses.

New Hampshire's rate of growth ranked 32nd among the states. The other New England states grew more slowly than New Hampshire, and all were well below the United States percent change of 9.7 percent. The fastest growing states were Nevada (35.1 percent) and Arizona (24.6 percent). Michigan (-0.6 percent) was the only state to lose population from 2000 to 2010.

### 2000-2010 Percent Change in Population, New England States

	Percent Change	Rank (Inc. DC)
Connecticut	4.9%	36
Maine	4.2%	40
Massachusetts	3.1%	44
<b>New Hampshire</b>	<b>6.5%</b>	<b>32</b>
Rhode Island	0.4%	50
Vermont	2.8%	45

### Components of Population Change

A decade is a relatively long time frame, masking a faster growth in the first couple of years to a near standstill by the end of the decade. Between the decennial Censuses, the US Census Bureau annually estimates *Components of Population Change*. The components measure changes in pop-

ulation due to natural increase (births minus deaths) and migration. Migration can be international, people moving in/out of the state from/to other countries, or domestic, people moving in/out of the state from/to other states.

In 2001, the state's annual rate of population growth was 1.6 percent. By 2007, the state's rate of population growth had dropped to a meager 0.3 percent annually; and in 2009, the rate fell to 0.2 percent. The main reason for the gain in the beginning of the last decade was domestic migration. But from 2007 to 2009, domestic migration turned negative, meaning more residents moved out of New Hampshire to another state than moved into New Hampshire from another state. Net natural increase and international migration remained positive throughout the decade.

## Contents

### Seasonally Adjusted Estimates

#### Unemployment Rates. . . . . 4

Current Employment Statistics. . . . . 4

### Not Seasonally Adjusted Estimates

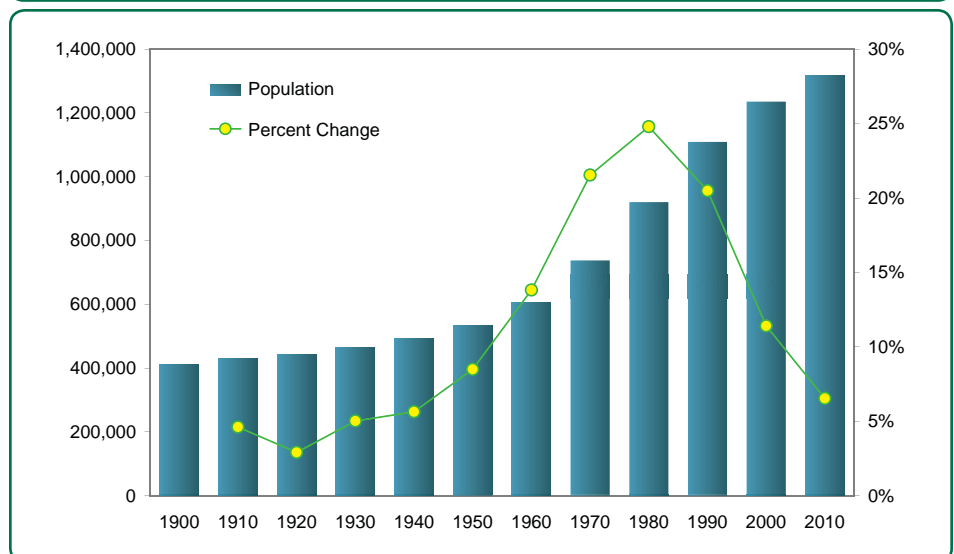
#### Unemployment Rates. . . . . 5

Current Employment Statistics. . . . . 7

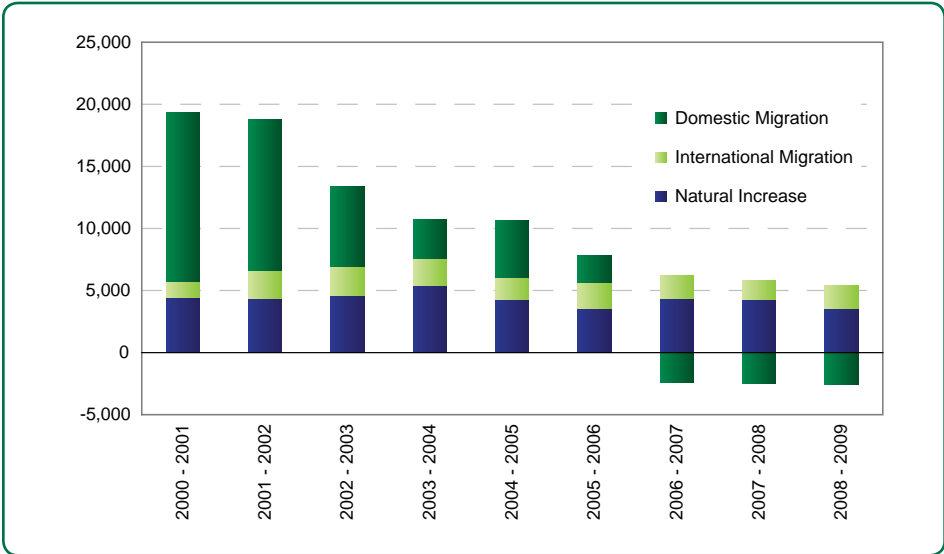
### Claims Activity . . . . . 8

Visit our Web site:  
[www.nh.gov/nhes/elmi](http://www.nh.gov/nhes/elmi)

### New Hampshire Population, 2000-2010



### New Hampshire Components of Population Change, 2000-2009



The next youngest states were Texas (33.6 years) and Alaska (33.8 years); the District of Columbia also had a median age of 33.8 years. The 2010 median age for all US residents was 37.2 years.

### Population by Race

New Hampshire gained population in all race and ethnic categories from 2000 to 2010. Though the numbers of minority population are still relatively small, the state ranked second highest among all states and the District of Columbia in the percent change of minority population. The state's minority population — which includes all those reporting ethnicity and race as something other than *non-Hispanic White alone* — grew from 4.9 percent to 7.7 percent, a 67.5 percent increase over the ten-year period. New Hampshire had 101,420 minority residents in 2010, compared to 60,534 in 2000.

### Population by Age

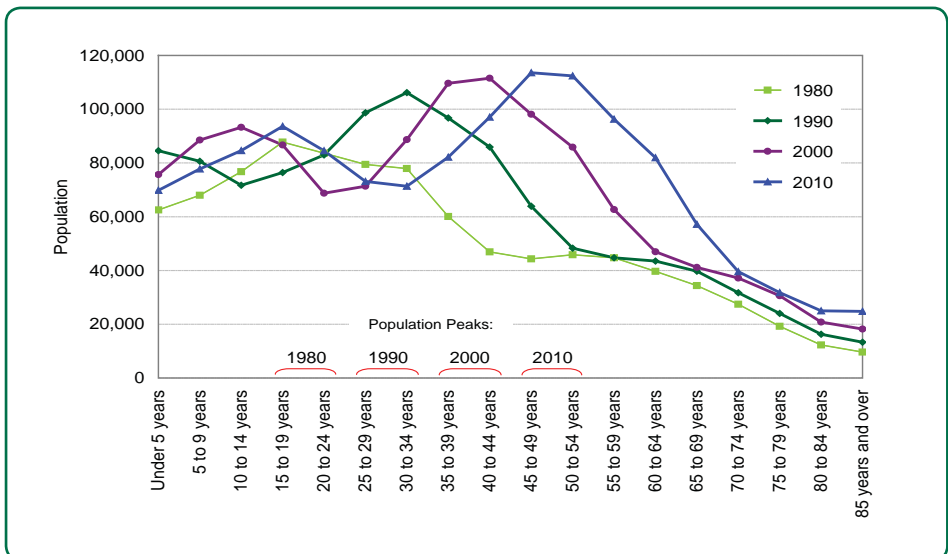
New Hampshire continues to grow older as the baby boom generation maintains its dominant share of the population. In 1980, the two age groups with the largest population were 15 to 19 years and 20 to 24 years of age. By 2010, the two age groups with the largest population were 45 to 49 years and 50 to 54 years of age. A similar, smaller bump represents the echo boom generation, also known as Gen Xers. Over the last four Censuses, the numbers of those age 70 and older have had a common pattern of decrease, but with each consecutive Census there are slightly more people in each cohort.

over 40: Pennsylvania (40.1 years), Florida (40.7 years) and West Virginia (41.3 years).

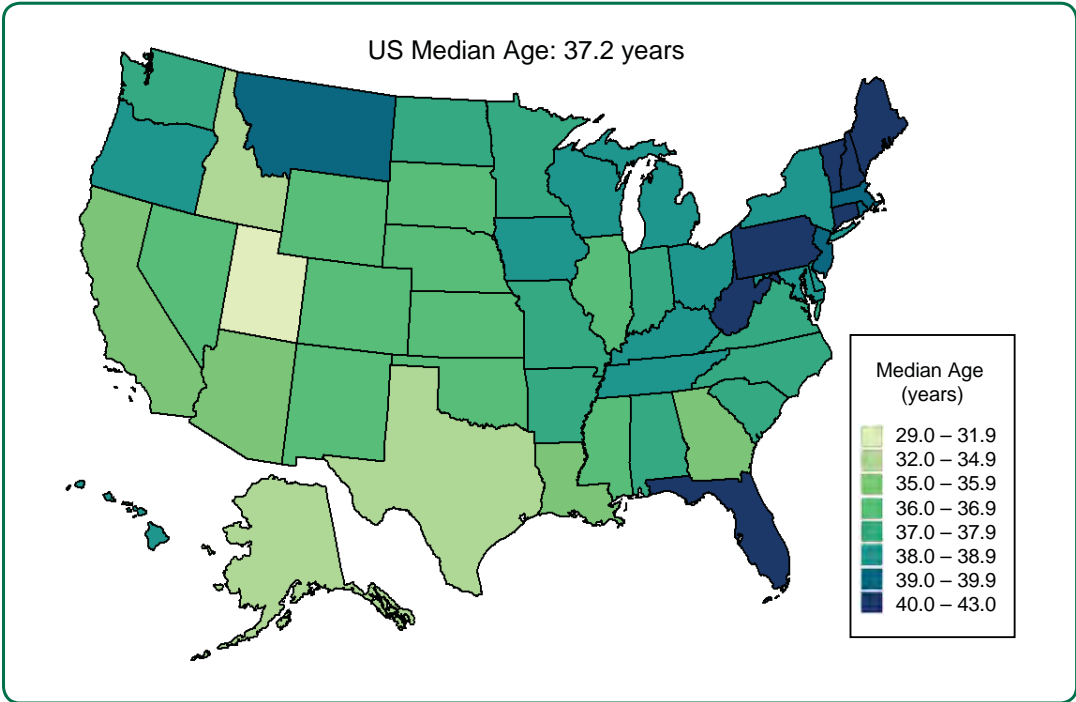
Utah continues its reign as the youngest state, with a median age of 29.2 years. It was the only state in 2010 with a median age below 30 years.

New Hampshire's population was 92.3 percent *non-Hispanic White only*, compared to the nation at 63.7 percent. From 2000 to 2010, the state's minor-

### New Hampshire Population by Age



## Median Age by State, 2010



ity population increased by 40,886 residents, edging out the increase in *non-Hispanic White alone* population of 39,798 residents.

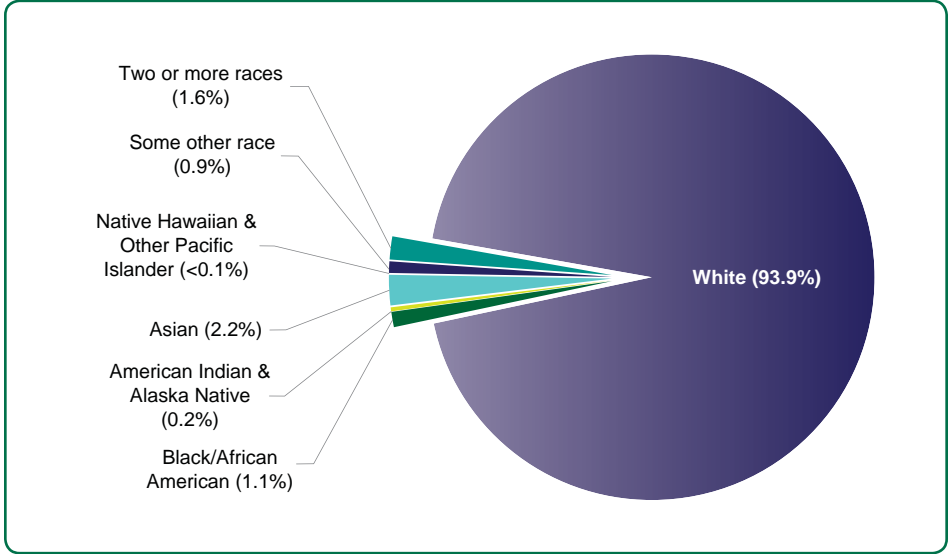
When breaking out New Hampshire’s population by race, the highest share among minorities of one race is *Asian*, followed by those who are *Black or African Americans*. Those who are *Two or more races* represent 1.6 percent of the total population. The share of total population of Hispanic or Latino ethnicity, regardless of race, was 2.8 percent in 2010. Though not a large share of the population, the number of Hispanic residents in the state increased by 79.1 percent over 2000.

Nevada had the highest percent change in minority population, increasing by 78.1 percent to 1.2 million. Only the District of Columbia lost minority population, decreasing by 5 percent. Overall, Hawaii, whose residents are largely *Native Hawaiian*

*and other Pacific Islanders*, held the largest share of minority population in 2010 at 77.3 percent, followed by the District of Columbia (65.5 percent), California (59.9 percent), and

New Mexico (59.5 percent). Maine has the lowest share of minority population (5.6 percent), followed by Vermont (5.7 percent) and West Virginia (6.8 percent).

## New Hampshire Population by Race, 2010



## Seasonally Adjusted Estimates

### Unemployment Estimates by Region

Seasonally Adjusted	Apr-11	Mar-11	Apr-10
United States	9.0%	8.8%	9.8%
Northeast	8.0%	8.2%	8.8%
New England	7.9%	8.1%	8.6%
Connecticut	9.1%	9.1%	9.2%
Maine	7.6%	7.6%	8.2%
Massachusetts	7.8%	8.0%	8.6%
New Hampshire	4.9%	5.2%	6.3%
Rhode Island	10.9%	11.0%	11.7%
Vermont	5.3%	5.4%	6.5%
Mid Atlantic	8.0%	8.2%	8.9%
New Jersey	9.3%	9.3%	9.6%
New York	7.9%	8.0%	8.7%
Pennsylvania	7.5%	7.8%	8.8%

### Local Area Unemployment Statistics (LAUS) by Place of Residence

New Hampshire	Nov-10	Dec-10	Jan-11	Feb-11	Mar-11	Apr-11
Unemployment Rate	5.7%	5.6%	5.6%	5.4%	5.2%	4.9%
Civilian Labor Force	743,380	743,680	744,200	744,990	744,410	744,140
Number Employed	701,370	701,920	702,750	704,420	705,990	707,950
Number Unemployed	42,010	41,760	41,450	40,570	38,420	36,190
<b>United States (in thousands)</b>						
Unemployment Rate	9.8%	9.4%	9.0%	8.9%	8.8%	9.0%
Civilian Labor Force	153,950	153,690	153,186	153,246	153,406	153,421
Number Employed	138,909	139,206	139,323	139,573	139,864	139,674
Number Unemployed	15,041	14,485	13,863	13,673	13,542	13,747

### Current Employment Statistics (CES) by Place of Establishment

Supersector	Dec-10	Jan-11	Feb-11	Mar-11	Apr-11
Total Nonfarm	627,000	626,000	628,400	626,900	631,600
Construction	20,900	20,100	20,000	19,900	20,300
Manufacturing	66,100	66,300	66,800	66,800	67,000
Durable Goods	50,900	51,000	51,500	51,400	51,300
Non-Durable Goods	15,200	15,300	15,300	15,400	15,700
Trade, Transportation, and Utilities	132,600	130,100	128,700	128,900	131,400
Wholesale Trade	26,200	25,400	25,200	25,400	25,700
Retail Trade	92,000	90,900	89,800	89,900	91,700
Transportation and Utilities	14,400	13,800	13,700	13,600	14,000
Information	11,600	11,400	11,500	11,400	11,400
Financial Activities	35,600	36,300	35,800	35,500	36,000
Real Estate and Rental and Leasing	6,600	6,800	6,700	6,500	6,700
Professional and Business Services	65,500	66,600	70,100	67,700	69,500
Administrative and Support	29,100	29,500	30,900	28,500	29,500
Education and Health Services	110,500	112,200	112,200	112,500	112,000
Educational Services	25,600	27,100	27,000	27,300	26,800
Health Care and Social Assistance	84,900	85,100	85,200	85,200	85,200
Leisure and Hospitality	66,000	66,700	66,800	67,300	66,500
Arts, Entertainment, and Recreation	11,700	12,300	12,300	12,300	12,300
Accommodation and Food Services	54,300	54,400	54,500	55,000	54,200
Other Services	20,500	20,000	19,400	19,700	20,000
Government	96,900	95,600	96,400	96,400	96,700
Federal Government	7,200	7,300	7,200	7,400	7,300
State Government	25,600	24,900	25,600	25,500	26,200
Local Government	64,100	63,400	63,600	63,500	63,200
Manchester NH MetroNECTA	97,200	96,600	97,700	97,700	98,900
Nashua NH-MA NECTA Division	124,300	124,300	124,900	125,900	125,600
Portsmouth NH-ME MetroNECTA	54,300	53,900	54,200	53,400	54,600
Rochester-Dover NH-ME MetroNECTA	55,800	55,200	55,900	56,500	57,000

**Current month is Preliminary  
Past months are Revised**

Please note that not all supersectors meet the statistical criteria for publication in this category. We seasonally adjust the total nonfarm data series and all the published supersectors independently. Therefore, the sum of the published parts will not equal the total.

## Not Seasonally Adjusted Estimates by Place of Residence

### Labor Force Estimates

<b>New Hampshire</b>	<b>Apr-11</b>	<b>Mar-11</b>	<b>Apr-10</b>
Total Civilian Labor Force	736,640	739,800	741,210
Employed	701,770	701,080	694,700
Unemployed	34,870	38,720	46,510
Unemployment Rate	4.7%	5.2%	6.3%

<b>United States (# in thousands)</b>	<b>Apr-11</b>	<b>Mar-11</b>	<b>Apr-10</b>
Total Civilian Labor Force	152,898	153,022	153,911
Employed	139,661	138,962	139,302
Unemployed	13,237	14,060	14,609
Unemployment Rate	8.7%	9.2%	9.5%

### Unemployment Rates by Region

<b>Not Seasonally Adjusted</b>	<b>Apr-11</b>	<b>Mar-11</b>	<b>Apr-10</b>
United States	8.7%	9.2%	9.5%
Northeast	7.8%	8.3%	8.6%
New England	7.7%	8.4%	8.5%
Connecticut	8.9%	9.3%	8.9%
Maine	7.9%	8.5%	8.4%
Massachusetts	7.4%	8.2%	8.4%
New Hampshire	4.7%	5.2%	6.3%
Rhode Island	10.8%	11.5%	11.7%
Vermont	5.9%	6.0%	6.9%
Mid Atlantic	7.8%	8.3%	8.7%
New Jersey	9.1%	9.6%	9.4%
New York	7.7%	8.0%	8.5%
Pennsylvania	7.1%	8.0%	8.5%

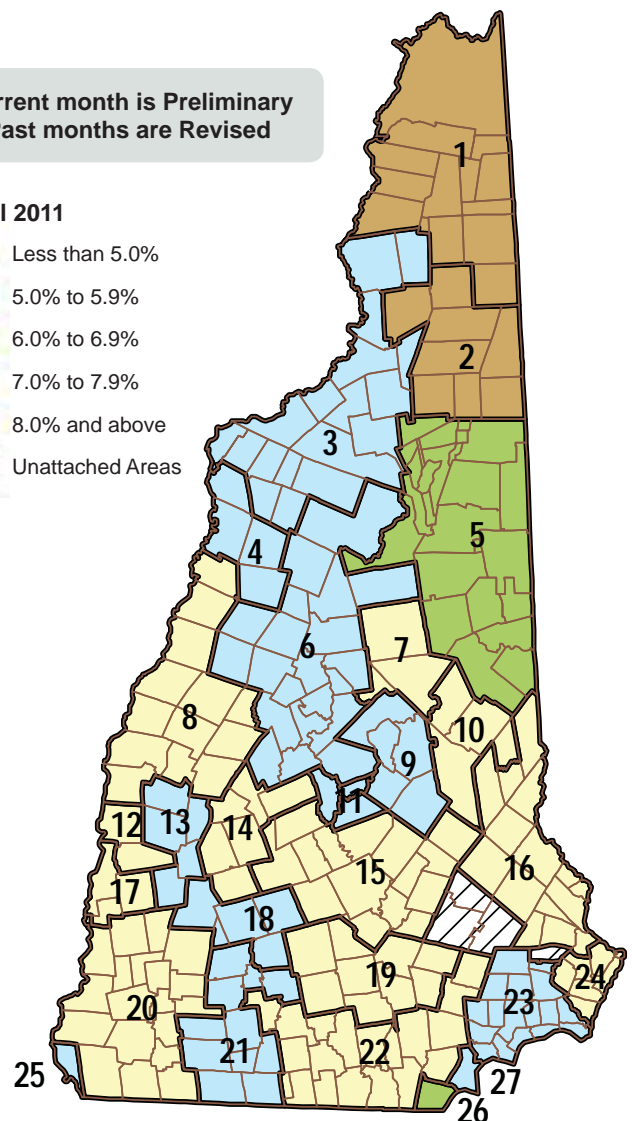
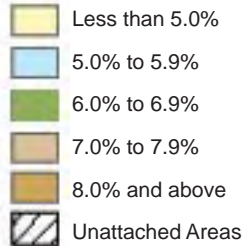
### Unemployment Rates by Area

<b>Counties</b>	<b>Apr-11</b>	<b>Mar-11</b>	<b>Apr-10</b>
Belknap	5.4%	6.1%	7.2%
Carroll	5.5%	5.7%	6.8%
Cheshire	4.6%	5.1%	5.9%
Coos	8.0%	7.5%	9.6%
Grafton	4.1%	4.2%	5.4%
Hillsborough	4.7%	5.3%	6.4%
Merrimack	4.2%	4.9%	5.6%
Rockingham	4.8%	5.4%	6.4%
Strafford	4.4%	5.1%	5.9%
Sullivan	4.5%	4.8%	5.9%

Map Key	<b>Labor Market Areas</b>	<b>Apr-11</b>	<b>Mar-11</b>	<b>Apr-10</b>
1	Colebrook NH-VT LMA, NH Portion	9.0%	6.0%	13.4%
2	Berlin NH MicroNECTA	8.6%	8.7%	8.6%
3	Littleton NH-VT LMA, NH Portion	5.5%	5.4%	7.4%
4	Haverhill NH LMA	5.3%	6.0%	7.4%
5	Conway NH-ME LMA, NH Portion	6.3%	6.0%	7.4%
6	Plymouth NH LMA	5.2%	5.1%	6.8%
7	Moultonborough NH LMA	4.7%	5.6%	5.4%
8	Lebanon NH-VT MicroNECTA, NH Portion	3.1%	3.3%	4.0%
9	Laconia NH MicroNECTA	5.6%	6.2%	7.4%
10	Wolfeboro NH LMA	4.6%	5.3%	5.8%
11	Franklin NH MicroNECTA	5.4%	5.9%	7.2%
12	Claremont NH MicroNECTA	4.7%	4.9%	6.0%
13	Newport NH LMA	5.2%	5.7%	6.6%
14	New London NH LMA	3.9%	4.2%	4.9%
15	Concord NH MicroNECTA	4.1%	4.8%	5.7%
16	Rochester-Dover NH-ME MetroNECTA, NH Portion	4.4%	5.1%	5.9%
17	Charlestown NH LMA	4.7%	5.2%	6.7%
18	Hillsborough NH LMA	5.0%	5.4%	6.2%
19	Manchester NH MetroNECTA	4.5%	5.1%	6.4%
20	Keene NH MicroNECTA	4.3%	4.7%	5.6%
21	Peterborough NH LMA	5.2%	5.8%	6.6%
22	Nashua NH-MA NECTA Division, NH Portion	4.7%	5.3%	6.3%
23	Exeter Area, NH Portion, Haverhill-N. Andover-Amesbury MA-NH NECTA Division	5.4%	5.9%	7.1%
24	Portsmouth NH-ME MetroNECTA, NH Portion	4.1%	4.7%	5.2%
25	Hinsdale Town, NH Portion, Brattleboro VT-NH LMA	5.6%	6.8%	7.6%
26	Pelham Town, NH Portion, Lowell-Billerica-Chelmsford MA-NH NECTA Division	6.3%	6.7%	7.9%
27	Salem Town, NH Portion, Lawrence-Methuen-Salem MA-NH NECTA Division	5.9%	5.8%	7.8%

Current month is Preliminary  
Past months are Revised

#### April 2011



New Hampshire unemployment and labor force estimates are calculated using a regression model which depends on Current Population Survey (CPS) estimates. Labor Market Area estimates are calculated using the Bureau of Labor Statistics "Handbook Method" and then adjusted to the State levels.

## Monthly Analysis of Current Employment Statistics (CES)

### Seasonally Adjusted

New Hampshire's preliminary seasonally adjusted employment gained 700 jobs from February 2011 to March 2011. Leading the gains were private education and health services (supersector 65), and leisure and hospitality (supersector 70). These grew by 900 and 600 jobs respectively. Trade, transportation, and utilities (supersector 40) grew by 500 jobs from February to March while jobs in other services (supersector 80) increased by 300 over-the-month. Employers in manufacturing (supersector 30), specifically non-durable goods, added 100 jobs from February to March. Over-the-month employment in both construction (supersector 20) and government (supersector 90) was flat. Professional and business services (supersector 60) decreased by 1,300 jobs over-the-month. Employment in financial activities (supersector 55) dropped by 400, while information (supersector 50) lost 100 jobs.

From March 2010 to March 2011 preliminary seasonally adjusted employment grew by 6,700 jobs. Leading this growth was professional and business services and leisure and hospitality,

each with an increase of 5,300 jobs over-the-year. Employment in private education and health services increased by 3,000, and manufacturing gained 1,500 jobs from March 2010 to March 2011.

Employers in trade, transportation, and utilities decreased their employment by 3,600 jobs between March 2010 and March 2011. Retail trade claimed nearly seventy percent of this drop, down 2,400 jobs. Over-the-year, other services lost 1,800 jobs, while employment in construction and government declined by 1,500 and 1,100 jobs, respectively. Information reported 300 fewer jobs in March 2011 than in March 2010, and financial activities reported 100 fewer jobs over-the-year.

### Unadjusted

Preliminary not seasonally adjusted employment increased by 300 jobs from February to March. Government (supersector 90) showed the largest employment increase, up 700 jobs. Private education and health services (supersector 65) recorded a gain of 600 jobs. Trade, transportation, and utilities (supersector 40), and construction (supersector 20), expanded their work-

force by 500 jobs each over-the-month. Jobs in other services (supersector 80) grew by 200 from February to March, and employment in mining and logging (supersector 10), and leisure and hospitality, each increased by 100 jobs.

The largest employment decrease from February to March was in the professional and business services industries (supersector 60), with a loss of 1,700 jobs. Employment in financial activities (supersector 55) dropped by 400. Information employment contracted by 100 over-the-month.

From March 2010 to March 2011 employment increased by 7,100 jobs in New Hampshire. The leisure and hospitality supersector experienced the largest growth over-the-year, with an increase of 5,800 jobs. Professional and business services employment grew by 5,200 from March 2010 to March 2011. Employment in private education and health services increased by 2,800 over-the-year. Manufacturing employers upped their workforces by 1,100 from March 2010 to March 2011. Employment in both mining and logging, and in financial activities remained unchanged over-the-year.

Several industrial sectors reported employment decreases from March 2010 to March 2011, with the largest, a decrease of 3,000, in trade, transportation, and utilities. Jobs in other services dropped by 2,000 over-the-year. Government dropped 1,500 jobs from March 2010 to March 2011. Construction employment decreased by 1,000 workers from March 2010 to March 2011, and employment in information fell by 300 jobs over-the-year.

*Ellie Goodbread*

### New Hampshire Nonfarm Wage and Salary Employment Not Seasonally Adjusted

Current Employment Statistics Employment by Supersector by place of establishment	Number of Jobs			Change from previous:	
	Apr-11 preliminary	Mar-11 revised	Apr-10	Month	Year
	Total All Supersectors	624,900	617,300	617,100	7,600
Private Employment Total	525,500	517,300	516,500	8,200	9,000
Mining and Logging	800	800	900	0	-100
Construction	19,500	17,500	20,400	2,000	-900
Manufacturing	66,300	65,900	65,300	400	1,000
Durable Goods	51,000	50,900	49,900	100	1,100
Non-Durable Goods	15,300	15,000	15,400	300	-100
Trade, Transportation and Utilities	128,700	126,000	130,100	2,700	-1,400
Wholesale Trade	25,400	25,000	25,700	400	-300
Retail Trade	89,500	87,700	90,200	1,800	-700
Transportation and Utilities	13,800	13,300	14,200	500	-400
Information	11,400	11,300	11,600	100	-200
Financial Activities	35,900	35,300	35,300	600	600
Professional and Business	69,400	65,800	64,000	3,600	5,400
Education and Health	112,600	112,700	110,300	-100	2,300
Leisure and Hospitality	61,400	62,800	57,400	-1,400	4,000
Other Services	19,500	19,200	21,200	300	-1,700
Government Total	99,400	100,000	100,600	-600	-1,200

For further analysis please read the Detailed Monthly Analysis of Industry Employment Data on our Web site at [www.nh.gov/nhes/elmi/nonfarm.htm](http://www.nh.gov/nhes/elmi/nonfarm.htm)

## Not Seasonally Adjusted Estimates by Place of Establishment

### Nonfarm Wage and Salary Employment by Metropolitan Statistical Areas

Employment by Sector number of jobs by place of establishment	Manchester NH MetroNECTA			Nashua NH-MA NECTA Division			Portsmouth NH-ME MetroNECTA			Rochester-Dover NH-ME MetroNECTA		
	preliminary Apr-11	Change from previous:		preliminary Apr-11	Change from previous:		preliminary Apr-11	Change from previous:		preliminary Apr-11	Change from previous:	
		Month	Year		Month	Year		Month	Year		Month	Year
Total All Sectors	98,200	1,700	1,700	124,900	800	200	53,700	1,700	100	57,400	900	1,400
Private Employment Total	85,600	1,700	1,400	109,400	800	400	43,600	1,900	200	43,100	1,000	1,100
Mining and Logging and Construction	3,600	300	-100	4,000	300	0	1,200	100	-100	1,400	200	0
Manufacturing	7,800	0	100	22,500	0	700	3,200	0	-100	5,900	100	100
Trade, Transportation and Utilities	18,800	700	300	27,100	0	-800	10,300	400	0	10,300	300	100
Wholesale Trade	4,100	100	0	5,300	0	0	1,700	0	0	1,200	100	100
Retail Trade	12,000	700	300	18,000	0	-800	7,600	300	0	8,200	100	0
Transportation, Warehousing and Utilities	Data not available			3,800	0	0	1,000	100	0	900	100	0
Information	3,200	0	-100	1,800	0	-100	1,900	0	-100	1,000	0	0
Financial Activities	7,300	100	200	7,300	0	0	4,000	100	200	4,300	0	100
Professional and Business	13,500	200	200	13,200	400	300	9,100	500	100	4,300	100	200
Education and Health	19,100	0	600	18,300	-100	200	6,500	200	300	8,800	0	300
Leisure and Hospitality	8,400	400	200	10,700	200	100	6,000	500	-100	5,300	300	300
Other Services	3,900	0	0	4,500	0	0	1,400	100	0	1,800	0	0
Government Total	12,600	0	300	15,500	0	-200	10,100	-200	-100	14,300	-100	300

### All Employee Payroll and Earnings Data by Metropolitan Statistical Areas

Sector	Average Weekly Earnings			Average Weekly Hours			Average Hourly Earnings		
	Apr-11 preliminary	Mar-11 revised	Apr-10	Apr-11 preliminary	Mar-11 revised	Apr-10	Apr-11 preliminary	Mar-11 revised	Apr-10
<b>New Hampshire</b>									
Total Private	\$773.23	\$763.62	\$763.62	33.2	33.1	33.1	\$23.29	\$23.07	\$23.07
Goods Producing	\$1,022.13	\$1,007.46	\$1,015.60	38.6	38.6	40.0	\$26.48	\$26.10	\$25.39
Private Service Providing	\$723.21	\$715.52	\$712.62	32.1	32.0	31.7	\$22.53	\$22.36	\$22.48
Manufacturing	\$1,053.80	\$1,034.41	\$1,069.04	38.7	38.8	41.5	\$27.23	\$26.66	\$25.76
Trade, Transportation, and Utilities	\$656.40	\$637.61	\$658.58	33.8	33.4	32.7	\$19.42	\$19.09	\$20.14
Professional and Business Services	\$964.92	\$956.07	\$986.93	34.0	33.7	34.8	\$28.38	\$28.37	\$28.36
Education and Health Services	\$764.96	\$763.22	\$717.12	32.4	32.7	32.0	\$23.61	\$23.34	\$22.41
Leisure and Hospitality	\$317.18	\$311.22	\$313.15	23.6	23.4	23.3	\$13.44	\$13.30	\$13.44
<b>Manchester NH MetroNECTA</b>									
Total Private	\$737.02	\$749.21	\$746.03	32.1	32.1	31.8	\$22.96	\$23.34	\$23.46
<b>Nashua NH-MA NECTA Division, NH Portion</b>									
Total Private	\$978.95	\$949.10	\$925.82	35.0	34.5	34.1	\$27.97	\$27.51	\$27.15
<b>Portsmouth NH-ME MetroNECTA, NH Portion</b>									
Total Private	\$752.71	\$758.40	\$792.18	31.8	32.0	32.6	\$23.67	\$23.70	\$24.30
<b>Rochester-Dover NH-ME MetroNECTA, NH Portion</b>									
Total Private	\$668.62	\$671.96	\$733.49	31.9	31.4	34.1	\$20.96	\$21.40	\$21.51

### Production Workers in Manufacturing Payroll and Earnings Data

Sector	Average Weekly Earnings			Average Weekly Hours			Average Hourly Earnings		
	Apr-11 preliminary	Mar-11 revised	Apr-10	Apr-11 preliminary	Mar-11 revised	Apr-10	Apr-11 preliminary	Mar-11 revised	Apr-10
<b>New Hampshire</b>									
Manufacturing	\$746.03	\$742.56	\$734.09	41.4	41.6	41.9	\$18.02	\$17.85	\$17.52
Durable Goods	\$765.74	\$736.42	\$765.89	42.4	41.7	43.1	\$18.06	\$17.66	\$17.77

### Unemployment Compensation Claims Activity

Initial Claims	Nov-10	Dec-10	Jan-11	Feb-11	Mar-11	Apr-11
All Offices	6,918	9,344	9,024	6,308	6,055	6,253

Continued Claims	Nov-10	Dec-10	Jan-11	Feb-11	Mar-11	Apr-11
All Offices	54,428	56,251	73,465	57,595	57,328	49,444

### Consumer Price Index

United States, All Urban Consumers, Not Seasonally Adjusted (CPI-U) (1982-1984=100)				
Apr-11	Mar-11	Apr-10	Change from Previous	
			Month	Year
224.906	223.467	218.009	1.0%	2.7%

#### NH Employment Security Economic and Labor Market Information Bureau

**General Information** .....(603) 228-4124  
 <www.nh.gov/nhes/elmi>

**Research Unit** ..... 228-4173

**Economist** ..... 229-4427

**Covered Employment & Wages** ..... 228-4177

**Current Employment Statistics** ..... 228-4179

**Local Area Unemployment Statistics** ... 228-4167

**Occupational Employment Statistics** ... 229-4315

#### New Hampshire Employment Security Local Offices:

Berlin . . . . .	752-5500	Claremont . . . . .	543-3111
Concord . . . . .	228-4100	Conway . . . . .	447-5924
Keene . . . . .	352-1904	Laconia . . . . .	524-3960
Lebanon . . . . .	448-6340	Littleton . . . . .	444-2971
Manchester . . . . .	627-7841	Nashua . . . . .	882-5177
Portsmouth . . . . .	436-3702	Salem . . . . .	893-9185
Somersworth . . . . .	742-3600		

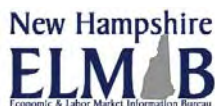
**Claims calls: 1-800-266-2252, option 3**

*New Hampshire Economic Conditions* is published monthly in coordination with the Bureau of Labor Statistics and the Employment and Training Administration of the U.S. Department of Labor.

To Order Publications: Visit our Web site at <www.nh.gov/nhes/elmi>; call (603) 228-4124; or send a written request to the following address:

ELMI Publications  
 NH Employment Security  
 32 South Main Street  
 Concord, NH 03301-4857

NH Employment Security is a proud member of America's Workforce Network and NH WORKS. NHES is an Equal Opportunity Employer and complies with the Americans with Disabilities Act. Auxiliary aids and services are available upon request to individuals with disabilities.  
 TDD ACCESS: RELAY NH 1-800-735-2964.



Your gateway to New Hampshire workforce and career information