

Measures of Labor Underutilization

The rate of unemployment has become one of the most commonly referenced measures of the economy's progress. This measure of how the economy is performing has garnered a great deal of media attention. But some people might not know that there are alternative labor force measures not often explained in the media.

There are six different labor force measures known as the *Alternative Measures of Labor Underutilization*.

The alternative measures of labor underutilization have long been available on a monthly basis from the Current Population Survey (CPS) for the United States as a whole. They are published in the Bureau of Labor Statistics' monthly Employment Situation news release. The monthly official concept of unemployment includes all jobless persons who are available to take

a job and had actively sought work in the prior four weeks. This concept has been thoroughly reviewed and validated since the inception of the CPS in 1940. The alternative measures are provided to data users and analysts who want more narrowly or broadly defined measures.

There are six different levels of labor underutilization, defined as follows:

- ▶U-1, persons unemployed 15 weeks or longer, as a percent of the civilian labor force;
- ▶U-2, job losers and persons who completed temporary jobs, as a percent of the civilian labor force;
- ▶U-3, total unemployed, as a percent of the civilian labor force (this is the same definition used for the official unemployment rate);
- ▶U-4, total unemployed plus discouraged workers, as a percent of the civil-

ian labor force plus discouraged workers;

▶U-5, total unemployed, plus discouraged workers, plus all other marginally attached workers, as a percent of the civilian labor force plus all marginally attached workers; and

▶U-6, total unemployed, plus all marginally attached workers, plus total employed part time for economic reasons, as a percent of the civilian labor force plus all marginally attached workers.

The U-1 and U-2 measures represent the smallest portion of the underemployed, measuring specific, restricted groups. The U-1 measure tracks long-term unemployed of fifteen weeks or more, and the U-2 measure adds to that job losers and people who have completed a temporary assignment. The annual average labor underuti-

Contents

New on the Web.....2

Seasonally

Adjusted Estimates

Unemployment Rates.....3

Current Employment

Statistics.....3

Not Seasonally

Adjusted Estimates

Unemployment Rates.....4

Current Employment

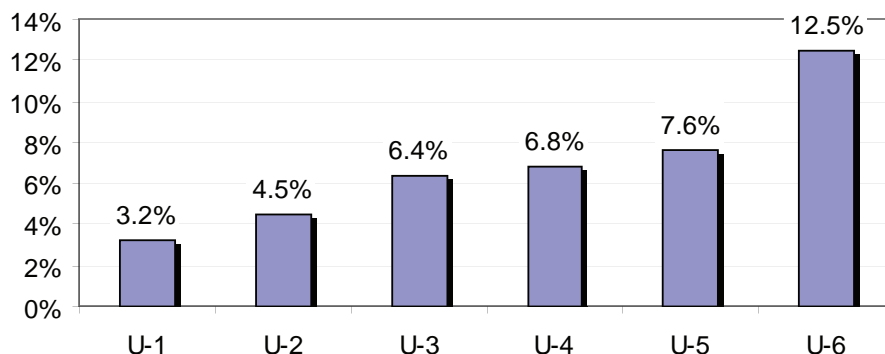
Statistics.....5

Claims Activity.....7

Visit our Web site:

www.nh.gov/nhes/elmi/

2009 Labor Underutilization Measures for New Hampshire



¹ "Alternative Measures of Labor Underutilization for States, 2009 Annual Averages". Accessed 3/12/10 <<http://data.bls.gov/cgi-bin/print.pl/lau/stalt.htm>>

lization as measured by U-1 and U-2 in New Hampshire during 2009 were 3.2 percent and 4.5 percent, respectively.

The U-3 measure uses the official definition of unemployment, and accounts for the total number of people who are unemployed that are able, available, and searching for employment. It can be slightly different than the official unemployment rate released by the state, which includes other factors. The annual average U-3 rate of underutilization for the State of New Hampshire in 2009 was 6.4 percent, nearly three full percentage points below the national average of 9.3 percent. (The official unemployment rate for New Hampshire in 2009 was 6.3 percent.)

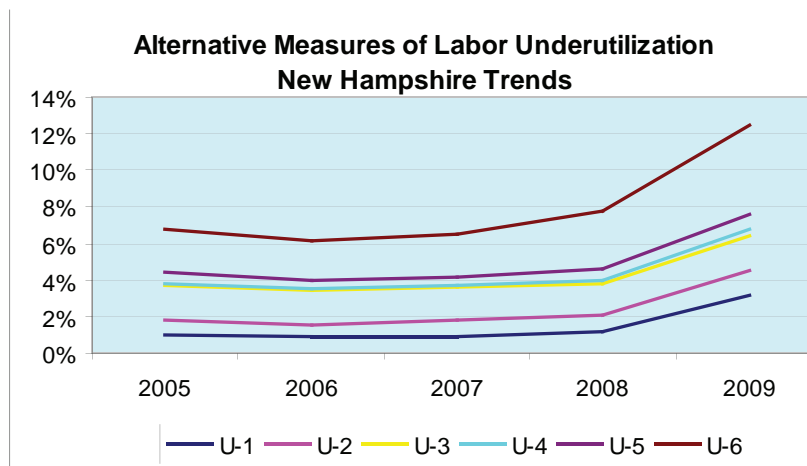
Measures U-4 and U-5 include not only the unemployed in the U-3 measurement but also add discouraged workers and people who have given up looking for work. The U-4

measurement tends to be fairly close to that of the U-3 due to only adding discouraged workers, while U-5 numbers tend to be slightly higher by adding the people who have stopped looking for work. The U-4 and U-5 underutilization of labor in 2009 averaged 6.8 and 7.6 percent respectively in New Hampshire.

The U-6 measurement includes all those in the previous U-1 through

U-5 elements plus those employed part time who can not find full time employment. For many analysts, the U-6 measurement of labor underutilization provides the most complete picture of the state's labor force by not excluding any one specific labor force demographic. The U-6 measure for New Hampshire in 2009 was 12.5 percent, 3.7 percent below the U-6 national level of 16.2 percent.

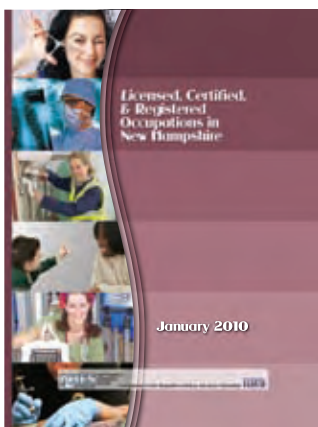
Jeff Dobe



New on the Web

Licensed, Certified, and Registered Occupations in New Hampshire

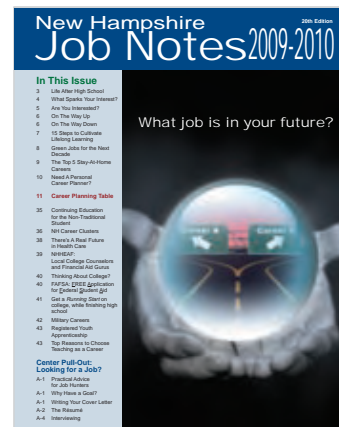
Provides information about occupational licenses, certifications, or registrations issued by state boards, commissions, and departments. This handbook is the only compilation of information on occupational licensing in New Hampshire, and is intended to be used as a reference guide to the state authorities responsible for occupational regulations.



New Hampshire Job Notes 2009-2010

An annual career planning tabloid that provides information on exploring, setting, and achieving career goals. The tabloid has articles on new and future occupations; average wages, growth rates, and training requirements for over 200 occupations in NH; job search techniques; exploring personal skills and interest areas; options for training and education beyond high school; career resources on the Internet; and much more.

The web address is:
www.nh.gov/nhes/elmi/



Seasonally Adjusted Estimates

Unemployment Estimates by Region

Seasonally Adjusted	Jan-10	Dec-09	Jan-09
United States	9.7%	10.0%	7.7%
Northeast	9.1%	9.0%	7.1%
New England	9.1%	8.9%	7.0%
Connecticut	9.0%	8.8%	7.1%
Maine	8.2%	8.1%	7.3%
Massachusetts	9.5%	9.3%	7.1%
New Hampshire	7.0%	6.9%	5.2%
Rhode Island	12.7%	12.7%	9.6%
Vermont	6.7%	6.7%	6.2%
Mid Atlantic	9.1%	9.1%	7.1%
New Jersey	9.9%	10.0%	7.5%
New York	8.8%	8.9%	7.1%
Pennsylvania	8.8%	8.8%	6.8%

Local Area Unemployment Statistics (LAUS) by Place of Residence

New Hampshire	Sep-09	Oct-09	Nov-09	Dec-09	Jan-10
Unemployment Rate	6.7%	6.8%	6.9%	6.9%	7.0%
Civilian Labor Force	741,800	741,660	741,550	741,440	743,190
Number Employed	691,780	691,180	690,690	690,310	690,960
Number Unemployed	50,020	50,480	50,860	51,130	52,230
United States (in thousands)					
Unemployment Rate	9.8%	10.1%	10.0%	10.0%	9.7%
Civilian Labor Force	153,927	153,854	153,720	153,059	153,170
Number Employed	138,768	138,242	138,381	137,792	138,333
Number Unemployed	15,159	15,612	15,340	15,267	14,837

Current Employment Statistics (CES) by Place of Establishment

Supersector	Sep-09	Oct-09	Nov-09	Dec-09	Jan-10
Total Nonfarm	618,700	621,300	618,700	625,100	626,900
Construction	22,500	23,200	22,300	22,000	21,900
Manufacturing	66,300	64,600	64,000	63,600	64,000
Durable Goods	50,300	48,700	48,300	47,900	48,400
Non-Durable Goods	16,000	15,900	15,700	15,700	15,600
Trade, Transportation, and Utilities	133,100	133,200	133,700	133,700	136,400
Wholesale Trade	26,100	26,300	26,900	26,800	26,100
Retail Trade	92,600	92,600	92,500	92,400	95,800
Transportation and Utilities	14,400	14,300	14,300	14,500	14,500
Information	12,500	12,600	12,500	12,400	12,400
Financial Activities	36,000	35,400	35,400	35,200	35,100
Real Estate and Rental and Leasing	7,000	6,900	6,800	6,700	6,700
Professional and Business Services	61,800	61,000	62,000	66,400	63,900
Administrative and Support	25,200	24,900	26,600	30,600	29,000
Education and Health Services	105,900	106,800	107,000	107,000	107,000
Educational Services	22,400	22,900	22,900	22,800	22,700
Health Care and Social Assistance	83,500	83,900	84,100	84,200	84,300
Leisure and Hospitality	61,900	63,900	61,000	63,700	64,900
Arts, Entertainment, and Recreation	10,800	11,000	10,400	11,000	11,600
Accommodation and Food Services	51,100	52,900	50,600	52,700	53,300
Other Services	21,100	21,600	21,500	22,600	22,900
Government	96,600	98,000	98,400	97,700	97,700
Federal Government	7,700	7,600	7,500	7,500	7,700
State Government	25,300	25,500	25,800	25,400	25,700
Local Government	63,600	64,900	65,100	64,800	64,300
Manchester NH MetroNECTA	96,800	97,200	97,500	97,900	98,000
Nashua NH-MA NECTA Division	125,100	125,100	125,100	124,800	125,300
Portsmouth NH-ME MetroNECTA	53,200	54,000	54,100	54,200	53,900
Rochester-Dover NH-ME MetroNECTA	55,800	55,400	55,200	55,200	54,800

Current month is Preliminary
Past months are Revised

Please note that not all supersectors meet the statistical criteria for publication in this category. We seasonally adjust the total nonfarm data series and all the published supersectors independently. Therefore, the sum of the published parts will not equal the total.

Not Seasonally Adjusted Estimates by Place of Residence

Labor Force Estimates

	Jan-10	Dec-09	Jan-09
New Hampshire			
Total Civilian Labor Force	743,330	737,120	739,820
Employed	686,210	688,000	697,120
Unemployed	57,120	49,120	42,700
Unemployment Rate	7.7%	6.7%	5.8%
United States (# in thousands)			
Total Civilian Labor Force	152,957	152,693	153,445
Employed	136,809	137,953	140,436
Unemployed	16,147	14,740	13,009
Unemployment Rate	10.6%	9.7%	8.5%

Rates by Area

Counties	Jan-10	Dec-09	Jan-09
Belknap	9.4%	7.5%	6.8%
Carroll	7.5%	6.3%	5.8%
Cheshire	7.2%	6.0%	5.3%
Coos	9.8%	9.1%	7.5%
Grafton	6.5%	5.5%	4.8%
Hillsborough	7.8%	6.9%	5.7%
Merrimack	7.1%	6.0%	5.4%
Rockingham	8.0%	7.1%	6.2%
Strafford	7.3%	6.2%	5.8%
Sullivan	7.2%	6.2%	5.3%

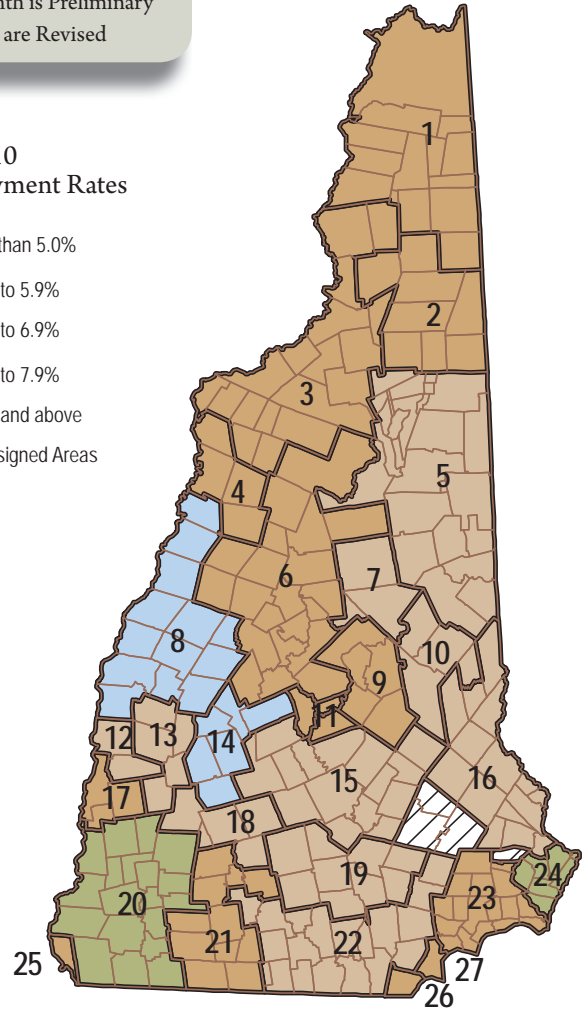
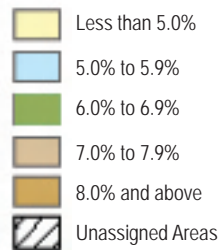
Map	Jan-10	Dec-09	Jan-09
Key Labor Market Areas			
1 Colebrook NH-VT LMA, NH Portion	10.2%	13.1%	5.4%
2 Berlin NH MicroNECTA	9.5%	8.0%	8.3%
3 Littleton NH-VT LMA, NH Portion	8.7%	7.3%	6.4%
4 Haverhill NH LMA	8.4%	6.9%	7.3%
5 Conway NH-ME LMA, NH Portion	7.7%	6.7%	5.5%
6 Plymouth NH LMA	8.0%	6.8%	5.9%
7 Moultonborough NH LMA	7.6%	5.5%	5.7%
8 Lebanon NH-VT MicroNECTA, NH Portion	5.0%	4.3%	3.5%
9 Laconia NH MicroNECTA	9.7%	7.8%	6.9%
10 Wolfeboro NH LMA	7.1%	5.7%	5.9%
11 Franklin NH MicroNECTA	9.4%	7.4%	7.5%
12 Claremont NH MicroNECTA	7.3%	6.6%	5.7%
13 Newport NH LMA	7.8%	6.8%	5.5%
14 New London NH LMA	5.7%	4.7%	4.3%
15 Concord NH MicroNECTA	7.2%	6.0%	5.4%
16 Rochester-Dover NH-ME MetroNECTA, NH Portion	7.4%	6.2%	5.8%
17 Charlestown NH LMA	8.8%	6.8%	6.6%
18 Hillsborough NH LMA	7.3%	6.3%	6.0%
19 Manchester NH MetroNECTA	7.6%	6.7%	5.6%
20 Keene NH MicroNECTA	6.8%	5.6%	4.9%
21 Peterborough NH LMA	8.0%	6.7%	6.0%
22 Nashua NH-MA NECTA Division, NH Portion	7.8%	6.9%	5.6%
23 Exeter Area, NH Portion, Haverhill-N. Andover-Amesbury MA-NH NECTA Division	9.0%	8.0%	7.3%
24 Portsmouth NH-ME MetroNECTA, NH Portion	6.7%	5.8%	5.2%
25 Hinsdale Town, NH Portion, Brattleboro VT-NH LMA	9.6%	8.1%	6.9%
26 Pelham Town, NH Portion, Lowell-Billerica-Chelmsford MA-NH NECTA Division	10.3%	9.8%	7.7%
27 Salem Town, NH Portion, Lawrence-Methuen-Salem MA-NH NECTA Division	9.0%	8.9%	7.1%

Rates by Region

Not Seasonally Adjusted	Jan-10	Dec-09	Jan-09
United States	10.6%	9.7%	8.5%
Northeast	9.7%	8.9%	7.8%
New England	10.0%	8.7%	7.9%
Connecticut	9.8%	8.4%	7.7%
Maine	9.3%	8.2%	8.4%
Massachusetts	10.4%	9.1%	7.9%
New Hampshire	7.7%	6.7%	5.8%
Rhode Island	13.4%	12.2%	10.8%
Vermont	7.5%	6.6%	7.1%
Mid Atlantic	9.6%	8.9%	7.8%
New Jersey	10.3%	9.7%	8.2%
New York	9.4%	8.8%	7.7%
Pennsylvania	9.5%	8.5%	7.6%

Current month is Preliminary
Past months are Revised

January - 10 Unemployment Rates



New Hampshire unemployment and labor force estimates are calculated using a regression model which depends on Current Population Survey (CPS) estimates. Labor Market Area estimates are calculated using the Bureau of Labor Statistics "Handbook Method" and then adjusted to the State levels.

Monthly Analysis of Current Employment Statistics (CES) Data

Seasonally Adjusted:

New Hampshire's preliminary seasonally adjusted employment increased by 1,800 jobs, over-the-month. Trade, transportation, and utilities (supersector 40) contributed to this increase, up 2,700 jobs. Leisure and hospitality (supersector 70) gained 1,200 jobs from December to January.

Employers in professional and business services (supersector 60) reported a loss of 2,500 jobs from December to January. Employers in construction (supersector 20) and financial activities (supersector 55) each lost 100 jobs, over-the-month.

Over-the-year, preliminary seasonally adjusted employment decreased by 8,700 jobs. Employers in manufacturing (supersector 30) reduced their workforce by 8,000 jobs from January 2009 to January 2010. During this same time period, employers in financial activities cut their payroll by 2,500 jobs. Over-the-year, employment in construction fell by 2,100 jobs.

On a more positive note, employment in leisure and hospitality increased by 2,800 jobs, over-the-year. Employers in other services (supersector 80) added 1,400 jobs from January 2009 to January 2010. Employment in government (supersector 90) rose over-the-year, up 500 jobs. Within government, local government posted an increase of 1,200 jobs. Private education and health services (supersector 65) gained 300 jobs from January 2009 to January 2010.

Seasonally Unadjusted:

Preliminary not seasonally adjusted employment decreased over-the-month, down 16,400 jobs. From December to January employment in government (supersector 90) dropped by 4,800 jobs. Employment in professional and business services (supersector 60) fell by 4,100 jobs. Employers in trade, transportation, and utilities (supersector 40) reported 3,300 fewer jobs than were reported in December. Over-the-month, employers in construction (supersector 20) reduced

their payroll by 2,600 jobs. Employment in private education and health services (supersector 65) declined by 800 jobs, over-the-month.

From January 2009 to January 2010 preliminary not seasonally adjusted employment decreased by 10,300 jobs. Over-the-year, employers in manufacturing (supersector 30) cut 8,100 jobs from their payrolls. From January 2009 to January 2010, employment in financial activities (supersector 55) declined by 2,500 jobs. Employment in construction declined by 2,000 jobs, over-the-year. From January 2009 to January 2010 employers in trade, transportation, and utilities reduced their workforce by 1,100 jobs.

On the positive side, leisure and hospitality (supersector 70) posted an over-the-year growth of 2,700 jobs. From January 2009 to January 2010 employment in other services (supersector 80) grew by 1,300 jobs. Employment in private education and health services and government rose by 400 and 100 jobs, respectively.

Gail Clay

New Hampshire Nonfarm Wage and Salary Employment Not Seasonally Adjusted

Current Employment Statistics Employment by Supersector by place of establishment	Number of Jobs			Change from previous:	
	Jan-10 preliminary	Dec-09 revised	Jan-09	Month	Year
Total All Supersectors	614,000	630,400	624,300	-16,400	-10,300
Private Employment Total	517,600	529,200	528,000	-11,600	-10,400
Mining and Logging	700	800	800	-100	-100
Construction	19,500	22,100	21,500	-2,600	-2,000
Manufacturing	63,700	64,000	71,800	-300	-8,100
Durable Goods	48,300	48,100	55,200	200	-6,900
Non-Durable Goods	15,400	15,900	16,600	-500	-1,200
Trade, Transportation and Utilities	135,000	138,300	136,100	-3,300	-1,100
Wholesale Trade	25,800	27,000	27,100	-1,200	-1,300
Retail Trade	95,000	96,400	94,400	-1,400	600
Transportation and Utilities	14,200	14,900	14,600	-700	-400
Information	12,400	12,500	12,500	-100	-100
Financial Activities	34,800	35,200	37,300	-400	-2,500
Professional and Business	62,300	66,400	63,200	-4,100	-900
Education and Health	106,600	107,400	106,200	-800	400
Leisure and Hospitality	60,200	60,200	57,500	0	2,700
Other Services	22,400	22,300	21,100	100	1,300
Government Total	96,400	101,200	96,300	-4,800	100

For further analysis please read the Detailed Monthly Analysis of Industry Employment Data on our Web site at www.nh.gov/nhes/elmi/nonfarm.htm

Not Seasonally Adjusted Estimates by Place of Establishment

Monthly New Hampshire All Employee Payroll and Earnings Data by Metropolitan Statistical Areas

Sector	Average Weekly Earnings			Average Weekly Hours			Average Hourly Earnings		
	Jan-10 preliminary	Dec-09 revised	Jan-09	Jan-10 preliminary	Dec-09 revised	Jan-09	Jan-10 preliminary	Dec-09 revised	Jan-09
New Hampshire									
Total Private	\$753.74	\$756.03	\$751.08	32.8	33.0	32.5	\$22.98	\$22.91	\$23.11
Goods Producing	\$1,017.60	\$1,020.47	\$1,006.67	40.0	39.8	39.4	\$25.44	\$25.64	\$25.55
Private Service Providing	\$704.66	\$705.01	\$695.64	31.5	31.7	31.0	\$22.37	\$22.24	\$22.44
All Manufacturing	\$1,061.31	\$1,043.53	\$1,025.56	41.2	40.4	40.6	\$25.76	\$25.83	\$25.26
Trade, Transportation, and Utilities	\$638.12	\$645.73	\$570.60	31.7	32.4	30.0	\$20.13	\$19.93	\$19.02
Professional and Business Services	\$1,010.10	\$1,010.53	\$1,070.64	35.0	35.1	35.7	\$28.86	\$28.79	\$29.99
Education and Health Services	\$713.12	\$717.38	\$690.43	32.4	32.3	31.7	\$22.01	\$22.21	\$21.78
Leisure and Hospitality	\$317.49	\$313.85	\$297.23	23.5	23.3	22.5	\$13.51	\$13.47	\$13.21
Manchester NH MetroNECTA									
Total Private	\$748.06	\$759.17	\$780.35	31.9	32.1	32.1	\$23.45	\$23.65	\$24.31
Nashua NH-MA NECTA Division, NH Portion									
Total Private	\$909.90	\$915.29	\$833.45	33.7	33.7	32.8	\$27.00	\$27.16	\$25.41
Portsmouth NH-ME MetroNECTA, NH Portion									
Total Private	\$820.55	\$832.17	\$838.45	33.1	33.3	32.1	\$24.79	\$24.99	\$26.12
Rochester-Dover NH-ME MetroNECTA, NH Portion									
Total Private	\$709.17	\$711.09	\$716.85	33.0	33.4	34.9	\$21.49	\$21.29	\$20.54

Monthly New Hampshire Nonfarm Wage and Salary Employment by Metropolitan Statistical Areas

Employment by Sector number of jobs by place of establishment	Manchester NH MetroNECTA			Nashua NH-MA NECTA Division			Portsmouth NH-ME MetroNECTA			Rochester-Dover NH-ME MetroNECTA		
	preliminary	Change from previous:		preliminary	Change from previous:		preliminary	Change from previous:		preliminary	Change from previous:	
		Jan-10	Month		Year	Jan-10		Month	Year		Jan-10	Month
Total All Sectors	97,600	-2,000	-1,000	124,300	-2,700	-4,600	52,600	-1,500	800	53,600	-2,800	-2,400
Private Employment Total	85,500	-1,600	-1,000	108,600	-2,100	-4,600	42,600	-1,000	500	41,800	-800	-1,400
Mining and Logging and Construction	3,500	-300	-400	3,800	-500	-500	1,200	0	-100	1,200	-200	-200
Manufacturing	7,700	-100	-1,000	21,300	-100	-2,300	3,400	0	-200	5,700	0	-700
Trade, Transportation and Utilities	19,300	-600	-300	29,500	-300	0	10,400	-400	200	10,600	-300	-200
Wholesale Trade	4,300	-100	-300	5,200	-100	-400	1,700	-100	-100	1,100	0	-100
Retail Trade	12,300	-200	100	20,400	0	400	7,700	-200	300	8,600	-200	-100
Transportation, Warehousing and Utilities	Data not available			3,900	-200	0	1,000	-100	0	900	-100	0
Information	3,400	100	300	2,300	0	-100	2,000	-100	200	1,200	0	0
Financial Activities	7,100	-100	-600	7,300	-200	-800	3,600	0	-300	4,100	0	-200
Professional and Business	14,200	-100	900	12,300	-400	-900	8,600	-300	-300	4,100	-100	-200
Education and Health	18,400	-100	0	17,700	-300	-100	6,000	0	100	8,300	0	0
Leisure and Hospitality	7,900	-300	100	9,900	-300	100	6,000	-200	900	4,800	-200	0
Other Services	4,000	-100	0	4,500	0	0	1,400	0	0	1,800	0	100
Government Total	12,100	-400	0	15,700	-600	0	10,000	-500	300	11,800	-2,000	-1,000

Average Earnings and Hours of Production Workers in Manufacturing

Sector	Average Weekly Earnings			Average Weekly Hours			Average Hourly Earnings		
	Jan-10 preliminary	Dec-09 revised	Jan-09	Jan-10 preliminary	Dec-09 revised	Jan-09	Jan-10 preliminary	Dec-09 revised	Jan-09
New Hampshire									
All Manufacturing	\$737.46	\$709.77	\$646.50	41.5	40.1	37.5	\$17.77	\$17.70	\$17.24
Durable Goods	\$775.54	\$758.67	\$646.29	42.8	41.8	36.7	\$18.12	\$18.15	\$17.61

Unemployment Compensation Claims Activity

Claims

Initial Claims	Aug-09	Sep-09	Oct-09	Nov-09	Dec-09	Jan-10
All Offices	7,102	6,779	7,105	8,665	12,261	10,376
Continued Claims	Aug-09	Sep-09	Oct-09	Nov-09	Dec-09	Jan-10
All Offices	102,254	79,920	68,872	85,489	81,923	107,247

New Hampshire Employment Security Local Offices:

Berlin.....752-5500	Claremont.....543-3111
Concord.....228-4100	Conway.....447-5924
Keene.....352-1904	Laconia.....524-3960
Lebanon.....448-6340	Littleton.....444-2971
Manchester.....627-7841	Nashua.....882-5177
Portsmouth.....436-3702	Salem.....893-9185
Somersworth....742-3600	

Claims calls refer to: 1-800-266-2252 option 3

Consumer Price Index

			Change from Previous	
Jan-10	Dec-09	Jan-09	Month	Year
216.687	215.949	211.143	0.3%	2.6%

United States
All Urban Areas (CPI-U)
(1982-1984=100)

NH Employment Security
Economic and Labor Market
Information Bureau:

General Information
(603) 228-4124
<www.nh.gov/nhes/elmi/>

Research Unit
228-4173

Economist
229-4427

Covered Employment & Wages
228-4177

Current Employment Statistics
228-4179

**Local Area Unemployment
Statistics**
228-4167

**Occupational Employment
Statistics**
229-4315

New Hampshire Economic Conditions is published monthly in coordination with the Bureau of Labor Statistics and the Employment and Training Administration of the U.S. Department of Labor.

To Order Publications: Visit our Web site at <www.nh.gov/nhes/elmi/>; call (603) 228-4124; or send a written request to the following address:

ELMI Publications, NH Employment Security
32 South Main Street
Concord, NH 03301-4857

NH Employment Security is a proud member of America's Workforce Network and NH WORKS. NHES is an Equal Opportunity Employer and complies with the Americans with Disabilities Act. Auxiliary aids and services are available upon request to individuals with disabilities. TDD ACCESS: RELAY NH 1-800-735-2964.

