

ECONOMIC CONDITIONS in New Hampshire



January 2003

Volume 103, Number 01

New Hampshire improved in four education indicators in 20022

Vital Signs 2003 is released.....3

Local Area Unemployment Statistics5

Current Employment Statistics6

For Additional Information8



Published by the Economic and Labor Market Information Bureau



Second quarter 2002 employment shows small over-the-year increase

Services and Construction add the most new jobs

New Hampshire's total covered employment increased by just over 6,100 jobs from 2nd quarter 2001 to 2nd quarter 2002. Job gains in Services and Construction drove this increase.

Services added about 2,000 new jobs over-the-year. Within Services, the increase of more than 1,900 jobs in Health services was more than enough to offset the 1,675 jobs lost in Business services. All but two of the remaining sixteen major groups in Services added jobs.

Construction also saw job growth from 2nd quarter 2001 to 2nd quarter 2002, adding more than 1,600 new jobs. Although all three major groups in Construction saw growth over-the-year, nearly six of every ten new Construction jobs were in Special trade contractors.

Both Finance, insurance, and real estate (FIRE) and Retail trade saw job gains,

1,229 and 1,118 respectively. Within FIRE, Security and commodity brokers claimed the majority of new jobs. In Retail trade, Eating and drinking places did the same.

Manufacturing lost more than 1,500 jobs over-the-year. A small gain of about 200 jobs in Durable goods was not enough to offset the loss of more than 1,700 jobs in Nondurable goods. Wholesale trade, with a drop of about 270 jobs, was the only other division to see losses.

The average weekly wage for all industries increased by \$24.85 from 2nd quarter 2001 to 2nd quarter 2002. The increases ranged from a low of \$14.06 in Agriculture, forestry, and fishing to a high of \$51.40 in Construction. Manufacturing saw the only decrease in average weekly wage, \$0.67.

Elisabeth Picard

New Hampshire Covered Employment and Wages

Industry	2nd qtr 2001		2nd qtr 2002		Net Change	
	Employment	AWW	Employment	AWW	Employment	AWW
Private Industries & Government	609,508	\$633.45	615,620	\$658.30	6,112	\$24.85
Private Industries	529,407	\$634.13	534,559	\$658.09	5,152	\$23.96
Agriculture, Forestry, and Fishing	6,292	\$406.88	6,651	\$420.94	359	\$14.06
Mining	435	\$800.30	447	\$841.43	12	\$41.13
Construction	25,384	\$665.08	27,022	\$716.48	1,638	\$51.40
Manufacturing	106,103	\$842.49	104,544	\$841.82	-1,559	-\$0.67
Transportation and Public Utilities	21,200	\$744.17	21,715	\$768.39	515	\$24.22
Wholesale Trade	33,044	\$958.85	32,773	\$1,009.55	-271	\$50.70
Retail Trade	131,015	\$356.68	132,133	\$371.75	1,118	\$15.07
Finance, Insurance, and Real Estate	31,689	\$825.46	32,918	\$864.01	1,229	\$38.55
Services	173,451	\$607.28	175,454	\$643.58	2,003	\$36.30
Government	80,101	\$628.94	81,061	\$659.65	960	\$30.71

New Hampshire improved in four education indicators in 2002 compared to 2000

The Granite State recently received higher grades in two education indicators, although it actually improved in four of them. *Measuring Up 2002*, a report from the National Center for Public Policy and Higher Education, surveys how states perform when it comes to higher education. States' performance is measured in preparation, participation, affordability, completion, and benefits. A state's improvement is based on its own performance from the previous report, while its grade is based on how it did relative to other states.

The state scored higher grades in *Participation* and *Benefits*. Scores in *Participation* reflected a higher portion of high schools students attending college immediately after completing high school. New Hampshire had 44 percent of high school freshmen enrolling in college within four years, an increase of one percent from the state's 2000 score, compared to 54 percent in the top states.

Improvements in *Benefits* scores included educational achievement, economic benefits, civic benefits, and adult skill levels. Increased scores obtained in 2002 were in *adults aged 25 to 65 with bachelor's degree or higher*, to 31 percent, and *increased income from education (bachelor)*, to eight percent. These increases of one percent in each category supported New Hampshire's overall grade promotion.

Two other indicators that New Hampshire improved upon, but didn't score a higher grade in, were *Completion* and *Affordability*. Results from the 2002 *Completion* indicator maintained New Hampshire's high score from 2000. New Hampshire either outperformed or matched scores of top performing states in four of the five measured sections of this indicator. Increases from the state's 2000 score ranged from one to three percent in these sections. *Affordability* did show that New Hampshire students and families were paying a lower share of their income, after financial aid, to attend post-secondary schools than results from 2000.

Additional educational facts about the states, not used in the grading, were also obtained by the survey. Most recent information (1998) showed that New Hampshire had 672 more students entering the state to attend college than leaving. It also put the number of GED (General Education Development) diplomas issued to young adults, ages 16 to 24, per 1,000 high school graduates in 2001 at 134, compared to the national level of 154.

Anita Josten

Measuring Up 2002: The State-by-State Report Card for Higher Education, National Center for Public Policy and Higher Education, Accessed December 13, 2002 <<http://measuringup.highereducation.org/2002/reporhome.htm>>

Measuring Up 2002

	CT		MA		ME		NH		RI		VT	
	2000	2002	2000	2002	2000	2002	2000	2002	2000	2002	2000	2002
Preparation	A	A	A	A	B+	B+	B	B	C	C	B -	B -
Participation	B+	A -	A -	A	C+	C+	C+	B -	A	A	C -	C+
Affordability	C	C -	D	D -	F	F	F	F	F	F	D -	F
Completion	B+	B+	A -	A -	B+	B	A	A	A	A	A	A
Benefits	A	A -	A -	A -	C+	D+	B -	B	A	A -	B -	B -

* Information for Learning indicator was incomplete for all states

Vital Signs 2003: Economic and Social Indicators for New Hampshire 1998-2001,
84 pages, January 2003

Total personal income in New Hampshire grew 3.3 percent in 2001 to just under \$43 billion. New Hampshire's 2001 average annual unemployment rate was 3.5 percent, tied with two other states for sixth lowest in the nation. The state's labor force surpassed 700,000 for the first time in July 2001. High-tech industries in the state employed 65,865 people in 2001.

This publication examines New Hampshire's economy over a four-year span. Each chapter includes narrative discussing some aspects of the section and brings in updates of developing stories, as well as depicting selected items in graph form. This and other ELMI publications are available by calling (603) 228-4124; by accessing our Web site at: www.nhes.state.nh.us/elmi/; or by sending a request to:

**ELMI Publications
NH Employment Security
32 South Main Street
Concord, NH 03301**

These statistics are examples of over 700 indicators found in Vitals Signs 2003: Economic and Social indicators for New Hampshire 1998-2001.

**Vital Signs 2003
Is Released**



Unemployment Compensation Claims Activity

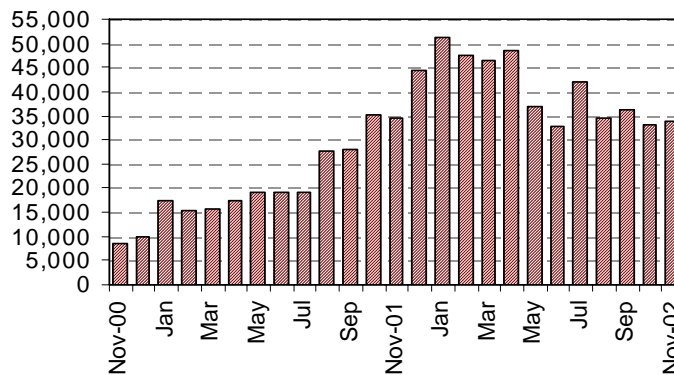
Total Regular Unemployment Compensation Programs:				Change from Previous			
				Month		Year	
	Nov-02	Oct-02	Nov-01	Net	Percent	Net	Percent
Initial Claims	4,584	4,914	7,176	-330	-6.7%	-2,592	-36.1%
Continued Weeks	33,917	33,079	34,499	838	2.5%	-582	-1.7%

Claims Activity

Unemployment Compensation Fund

Unemployment compensation fund balance at the end of November:	\$295,119,337.85
Average payment for a week of total unemployment:	\$273.24
Net benefits paid:	\$7,393,200.17
Net contributions received during the month:	\$1,952,750.33
Interest Received:	\$0.00
Reed Act Distribution:	\$0.00
Reed Act Withdrawn:	\$392,627.00

Trust Fund



Continued Weeks Claimed

Nov. 2000 - Nov. 2002

Over-the-year continued weeks claimed fell by 1.7 percent. This was the second month in a row that over-the-year continued weeks claimed decreased.

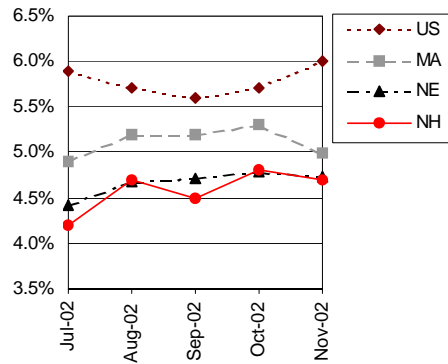
Nov-02	Oct-02	Nov-01	Month	Year
181.3	181.3	177.4	0.0%	2.2%

United States
All Urban Areas (CPI-U)
(1982-1984=100)

Consumer Price Index

N.H. and U.S. Seasonally Adjusted Unemployment Rate

Over-the-month unemployment rates fell in Rhode Island, Massachusetts and New Hampshire. These three states continue to have the highest unemployment rates in New England.



Unemployment Rates by Region

	preliminary	revised	
	Nov-02	Oct-02	Nov-01
United States	6.0%	5.7%	5.6%
Northeast	5.5%	5.4%	5.0%
New England	4.7%	4.8%	4.3%
Connecticut	4.4%	4.2%	3.9%
Maine	4.3%	4.1%	4.3%
Massachusetts	5.0%	5.3%	4.4%
New Hampshire	4.7%	4.8%	4.0%
Rhode Island	5.1%	5.2%	4.9%
Vermont	4.0%	3.9%	4.2%
Mid Atlantic	5.8%	5.6%	5.2%
New Jersey	5.6%	5.6%	4.8%
New York	6.0%	5.8%	5.6%
Pennsylvania	5.6%	5.3%	5.0%

Labor Force Estimates By Place of Residence

	Jul-02	Aug-02	Sep-02	revised Oct-02	preliminary Nov-02
New Hampshire					
Unemployment Rate	4.2%	4.7%	4.5%	4.8%	4.7%
Civilian Labor Force	711,200	713,840	713,240	716,480	715,050
Number Employed	681,320	680,330	681,220	682,120	681,630
Number Unemployed	29,880	33,510	32,020	34,360	33,420
United States (in thousands)					
Unemployment Rate	5.9%	5.7%	5.6%	5.7%	6.0%
Civilian Labor Force	142,390	142,616	143,277	143,123	142,733
Number Employed	134,045	134,474	135,185	134,914	134,225
Number Unemployed	8,345	8,142	8,092	8,209	8,508

Seasonally Adjusted Nonfarm Employment By Place of Establishment

Industry	Jul-02	Aug-02	Sep-02	revised Oct-02	preliminary Nov-02
TOTAL ALL INDUSTRIES	627,300	625,600	624,800	622,700	623,100
Mining*	600	600	600	500	500
Construction	27,500	27,700	27,900	27,700	27,700
Manufacturing	100,900	99,000	99,400	99,000	98,100
Durable Goods	73,800	72,200	72,300	72,300	71,500
Nondurable Goods	27,100	26,800	27,100	26,700	26,600
Transportation and Public Utilities	20,600	20,500	20,400	20,400	20,500
Trade	165,000	165,000	165,600	165,300	164,700
Wholesale Trade	32,800	32,900	33,300	33,500	33,700
Retail Trade	132,200	132,100	132,300	131,800	131,000
Finance, Insurance, and Real Estate	34,100	34,300	34,300	34,200	34,300
Services	192,400	193,100	191,400	190,300	191,500
Government	86,200	85,400	85,200	85,300	85,800

* Since N.H. mining employment exhibits no clear seasonal pattern, these estimates are not adjusted.

Labor Force Estimates

New Hampshire	Nov-02 preliminary	Oct-02 revised	Nov-01
Number of Workers			
Total Civilian Labor Force	715,730	711,340	691,280
Employed	682,200	680,020	663,590
Unemployed	33,530	31,320	27,690
Unemployment Rate (% of labor force)	4.7%	4.4%	4.0%

Unemployment Rates by Area

	Nov-02 preliminary	Oct-02 revised	Nov-01
--	-----------------------	-------------------	--------

U.S. and Regional States

United States	5.7%	5.3%	5.3%
Northeast	5.3%	5.1%	4.8%
New England	4.5%	4.5%	4.0%
Connecticut	3.9%	3.8%	3.4%
Maine	4.3%	3.7%	4.2%
Massachusetts	4.8%	5.0%	4.2%
New Hampshire	4.7%	4.4%	4.0%
Rhode Island	4.5%	4.9%	4.3%
Vermont	3.9%	3.4%	4.0%
Mid Atlantic	5.6%	5.4%	5.1%
New Jersey	5.4%	5.4%	4.6%
New York	5.9%	5.6%	5.5%
Pennsylvania	5.4%	5.0%	4.9%

Labor Market Areas

Berlin LMA	7.1%	7.0%	10.9%
Seabrook-South Hampton, NH Portion Boston, MA-NH PMSA	7.6%	7.7%	7.1%
Claremont LMA	2.7%	2.4%	2.0%
Colebrook LMA	5.8%	2.1%	5.3%
Concord LMA	3.3%	3.0%	2.6%
Conway LMA	3.6%	3.1%	3.1%
NH Portion Hartford-Lebanon, VT-NH LMA	1.4%	1.3%	1.3%
NH Portion Keene-Brattleboro, NH-VT LMA	3.1%	2.7%	2.8%
Laconia LMA	3.4%	3.0%	3.1%
Lancaster LMA	4.6%	2.9%	4.2%
Salem-Derry, NH Portion Lawrence, MA-NH PMSA	7.2%	7.0%	6.2%
Littleton LMA	3.7%	2.3%	3.2%
Pelham, NH Portion Lowell, MA-NH PMSA	7.8%	7.6%	6.1%
Manchester PMSA	4.6%	4.5%	4.0%
Nashua PMSA	5.9%	5.9%	5.4%
Peterborough LMA	4.0%	3.8%	3.2%
Plymouth LMA	3.4%	2.4%	2.5%
NH Portion Portsmouth- Rochester, NH-ME PMSA	4.5%	4.2%	3.2%

Counties

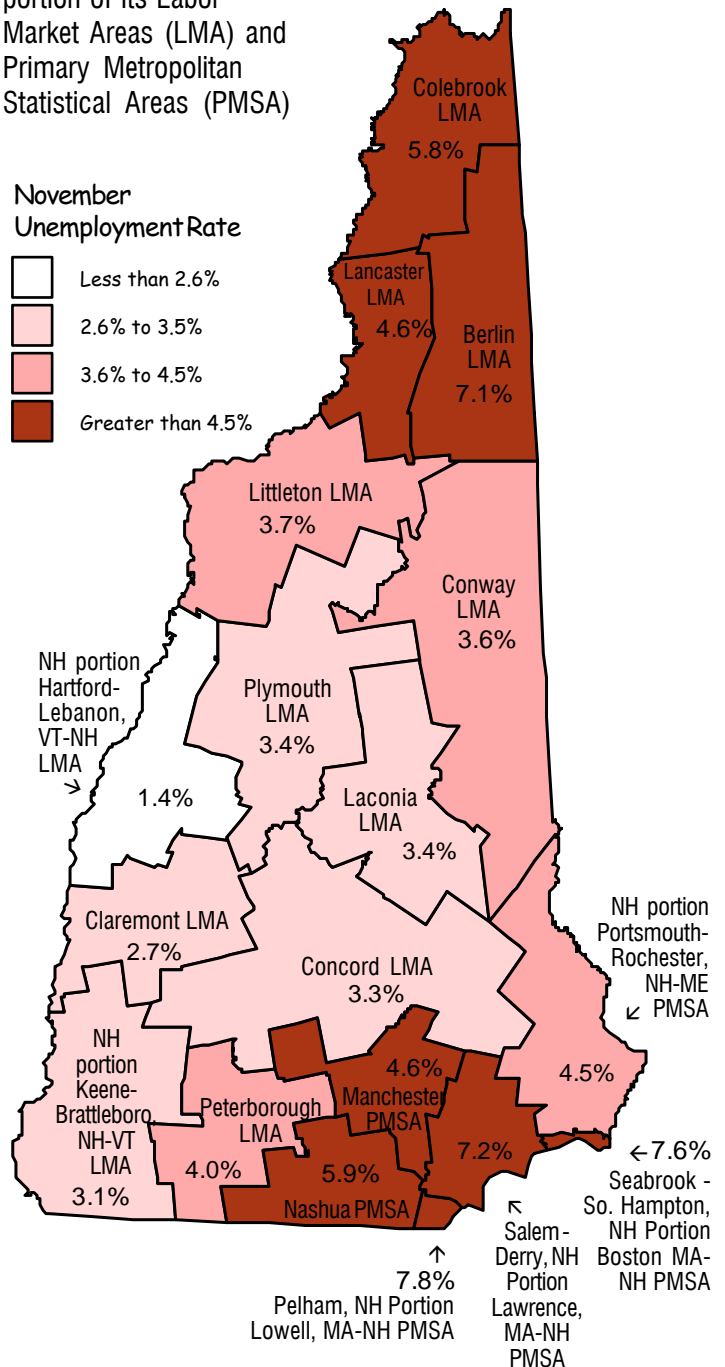
Belknap	3.5%	3.1%	3.1%
Carroll	3.4%	2.8%	3.1%
Cheshire	3.3%	2.9%	3.0%
Coos	6.2%	4.8%	7.9%
Grafton	2.4%	1.8%	1.9%
Hillsborough	5.3%	5.2%	4.7%
Merrimack	3.2%	2.8%	2.7%
Rockingham	5.9%	5.8%	5.0%
Strafford	4.8%	4.4%	3.0%
Sullivan	2.7%	2.3%	2.0%

Local Area
Unemployment
Statistics
(LAUS)

Not Seasonally
Adjusted

By Place of Residence

Unemployment rates in the New Hampshire portion of its Labor Market Areas (LMA) and Primary Metropolitan Statistical Areas (PMSA)



Over-the-year Private employment fell by 3,100 in November, the largest drop since over-the-year employment decreased by 3,700 in January 2002.

More detailed industry information is available at our Web site

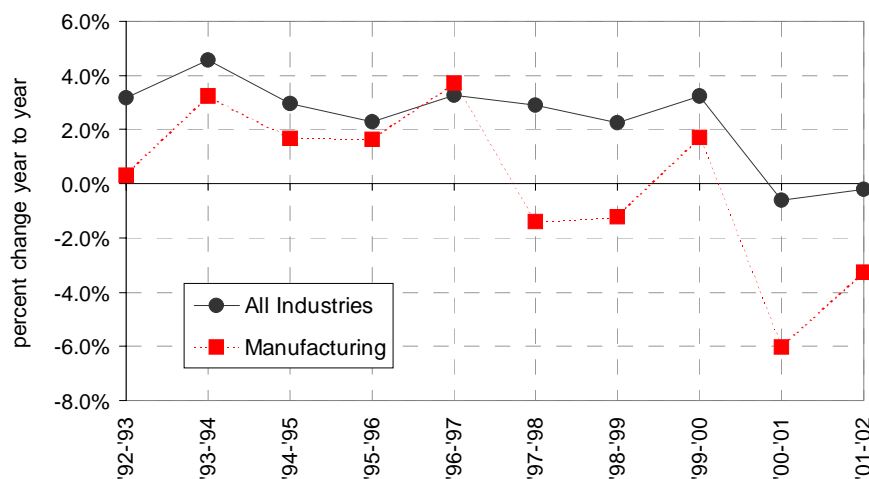
Nonfarm employment in selected industries

Percent change Nov. to Nov. 1992 - 2002

Monthly Not Seasonally Adjusted New Hampshire Nonfarm Wage and Salary Employment

Current Employment Statistics Employment by Industry by place of establishment	Number of Jobs			Change From Previous:	
	Nov-02 (preliminary)	Oct-02 (revised)	Nov-01	Month	Year
	Total All Industries	626,600	627,000	627,800	-400
Private Employment Total	537,800	539,300	540,900	-1,500	-3,100
Mining	500	500	500	0	0
Construction	28,000	28,300	28,000	-300	0
Manufacturing	98,200	98,600	101,500	-400	-3,300
Durable Goods Total	71,600	71,900	73,900	-300	-2,300
Nondurable Goods Total	26,600	26,700	27,600	-100	-1,000
Transportation & Public Utilities	20,700	20,700	21,500	0	-800
Trade Total	167,000	166,200	166,900	800	100
Wholesale Trade	33,600	33,400	32,600	200	1,000
Retail Trade	133,400	132,800	134,300	600	-900
Finance, Insurance, & Real Estate	34,200	34,100	33,700	100	500
Services	189,200	190,900	188,800	-1,700	400
Government Total	88,800	87,700	86,900	1,100	1,900

Note: Totals are rounded to hundreds



Current Employment Statistics (CES) Manchester PMSA

Employment by Industry Number of jobs by place of establishment	Number of Jobs			Change from previous:	
	Nov-02 (prelim.)	Oct-02 (revised)	Nov-01	Month	Year
	Total All Industries	106,900	106,500	107,600	400
Private Employment Total	94,600	94,400	95,900	200	-1,300
Construction & Mining	5,200	5,400	5,300	-200	-100
Manufacturing	12,800	12,600	13,200	200	-400
Durable Goods	8,400	8,400	9,100	0	-700
Transportation & Public Utilities	6,300	6,500	6,600	-200	-300
Trade Total	27,000	26,500	27,200	500	-200
Wholesale Trade	7,300	7,200	7,200	100	100
Retail Trade	19,700	19,300	20,000	400	-300
Finance, Insurance, & Real Estate	8,400	8,400	8,300	0	100
Services	34,900	35,000	35,300	-100	-400
Government Total	12,300	12,100	11,700	200	600

Over-the-month employment gains in Retail Trade of 400 equaled the total over-the-month growth in employment in the Manchester PMSA.

Current Employment Statistics Nashua PMSA

Employment by Industry Number of jobs by place of establishment	Number of Jobs			Change from previous:	
	Nov-02 (prelim.)	Oct-02 (revised)	Nov-01	Month	Year
	Total All Industries	99,800	99,700	100,300	100
Private Employment Total	89,800	89,700	90,300	100	-500
Construction & Mining	3,800	3,900	3,300	-100	500
Manufacturing	27,600	27,700	28,100	-100	-500
Durable Goods	22,300	22,600	22,700	-300	-400
Nondurable Goods	5,300	5,100	5,400	200	-100
Transportation & Public Utilities	1,800	1,800	2,300	0	-500
Trade Total	25,400	25,200	25,700	200	-300
Wholesale Trade	4,000	4,100	4,400	-100	-400
Retail Trade	21,400	21,100	21,300	300	100
Finance, Insurance, & Real Estate	6,300	6,200	6,300	100	0
Services	24,900	24,900	24,600	0	300
Government Total	10,000	10,000	10,000	0	0

Current Employment Statistics Portsmouth-Rochester, NH-ME PMSA

Employment by Industry Number of jobs by place of establishment	Number of Jobs			Change from previous:	
	Nov-02 (prelim.)	Oct-02 (revised)	Nov-01	Month	Year
	Total All Industries	126,500	125,900	127,900	600
Private Employment Total	101,100	100,900	103,200	200	-2,100
Construction & Mining	4,300	4,400	4,200	-100	100
Manufacturing	17,000	17,000	17,400	0	-400
Durable Goods	11,100	11,100	11,200	0	-100
Nondurable Goods	5,900	5,900	6,200	0	-300
Transportation & Public Utilities	4,200	4,200	4,200	0	0
Trade Total	33,400	33,300	34,700	100	-1,300
Wholesale Trade	6,200	6,200	6,200	0	0
Retail Trade	27,200	27,100	28,500	100	-1,300
Finance, Insurance, & Real Estate	6,200	6,200	6,300	0	-100
Services	36,000	35,800	36,400	200	-400
Government Total	25,400	25,000	24,700	400	700

Average Earnings and Hours of Production Workers in Manufacturing

Industry	Average Weekly Earnings			Average Weekly Hours			Average Hourly Earnings		
	Nov-02 prelim.	Oct-02 revised	Nov-01	Nov-02 prelim.	Oct-02 revised	Nov-01	Nov-02 prelim.	Oct-02 revised	Nov-01
New Hampshire									
All Manufacturing	\$602.39	\$599.00	\$577.30	43.4	43.5	42.7	\$13.88	\$13.77	\$13.52
Durable Goods	638.46	626.08	591.85	46.4	45.9	44.5	13.76	13.64	13.30
Nondurable Goods	513.00	532.42	540.91	36.0	37.6	38.2	14.25	14.16	14.16
Manchester PMSA									
All Manufacturing	\$610.19	\$617.09	\$611.51	37.9	38.4	38.1	\$16.10	\$16.07	\$16.05
Durable Goods	649.35	663.07	649.89	39.0	39.8	39.7	16.65	16.66	16.37
Nashua PMSA									
All Manufacturing	\$504.72	\$502.27	\$547.61	36.0	35.8	38.7	\$14.02	\$14.03	\$14.15
Durable Goods	459.46	460.79	477.60	35.7	35.5	36.1	12.87	12.98	13.23
Nondurable Goods	662.36	656.38	818.86	36.9	37.0	48.8	17.95	17.74	16.78
Portsmouth-Rochester, NH-MA PMSA									
All Manufacturing	\$620.19	\$617.03	\$556.59	43.4	43.3	40.1	\$14.29	\$14.25	\$13.88
Durable Goods	684.32	684.59	601.52	45.5	46.1	41.2	15.04	14.85	14.60
Nondurable Goods	492.74	484.60	475.49	45.5	37.8	38.1	12.57	12.82	12.48

The Nashua PMSA's over-the-year decrease in total employment of 500 was the smallest of New Hampshire's three PMSAs, in part because of growth in Construction and Services employment.

The Portsmouth-Rochester PMSA's over-the-month gain in total employment of 600 was the largest among New Hampshire's PMSAs, driven primarily by an increase in Government employment of 400.

Both over-the-month and over-the-year average hourly earnings rose in the Manchester PMSA, the Portsmouth-Rochester PMSA, and statewide as well. Decreases in over-the-month and over-the-year average hourly earnings in durable goods were responsible for the over-the-month and over-the-year decline in average hourly earnings in the Nashua PMSA.

For Additional Information



<p>New Hampshire Employment Security Economic and Labor Market Information Bureau:</p> <p>General Information 228-4124 Research Unit 228-4173 Economist 228-4122 Covered Employment and Wages (ES-202) 228-4177 Current Employment Statistics (790) 228-4127 Local Area Unemployment Statistics 228-4175 Occupational Employment Statistics 229-4315</p> <p>Internet address: ... www.nhes.state.nh.us/elmi/ E-mail: elmi@nhes.state.nh.us</p> <p>U.S. Department of Labor Boston Regional Office: Bureau of Labor Statistics Information (617) 565-2327</p>	<p>New Hampshire Employment Security Local Offices:</p> <p>Berlin 752-5500 Claremont 543-3111 Concord 228-4100 Conway 447-5924 Keene 352-1904 Laconia 524-3960 Lebanon 448-6340 Littleton 444-2971 Manchester ... 627-7841 Nashua 882-5177 Portsmouth ... 436-3702 Salem 893-9185 Somersworth .. 742-3600</p>
<p>About This Publication: <i>Economic Conditions in New Hampshire</i> is published monthly in coordination with the Bureau of Labor Statistics and the Employment and Training Administration of the U.S. Department of Labor. NHES is an Equal Opportunity Employer and complies with the Americans with Disabilities Act. Auxiliary aids and services are available upon request to individuals with disabilities. TDD ACCESS: RELAY NH 1-800-735-2964.</p>	
<p>To Order Publications: Visit our Web site at <www.nhes.state.nh.us/elmi/>; call (603) 228-4124; or send a written request to the following address:</p> <p style="text-align: center;">ELMI Publications New Hampshire Employment Security 32 South Main Street Concord, New Hampshire 03301-4857</p>	

NH EMPLOYMENT SECURITY
 32 SOUTH MAIN STREET
 CONCORD NH 03301-4857

OFFICIAL BUSINESS

ADDRESS SERVICE REQUESTED