

Current Employment Statistics
Nonfarm Employment and Earnings Estimates

2001 Preliminary and 2000 Final

based on latest available data
including *covered* employment

and

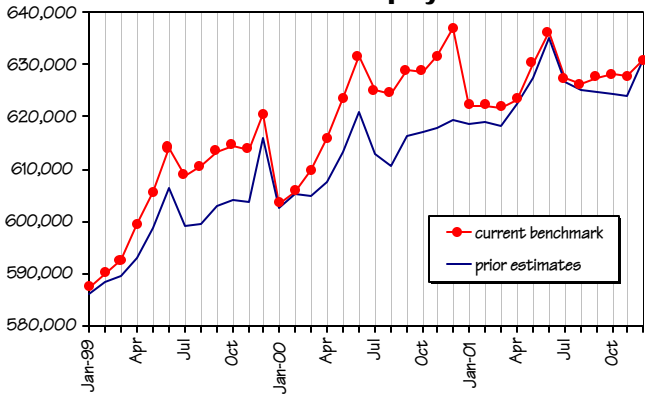
Local Area Unemployment Statistics
2001 Benchmark

a supplement to
Economic Conditions
in New Hampshire

Table of Contents:	page
Nonfarm Benchmark Revised Employment Numbers	2
Nonfarm Employment by Industry:	
New Hampshire	4
Manchester, NH, PMSA	8
Nashua, NH, PMSA	9
Portsmouth-Rochester, ME-NH, PMSA	10
Average Weekly Hours of Nonfarm Production Workers in Manufacturing:	
New Hampshire	11
New Hampshire PMSAs	12
Average Weekly Earnings of Nonfarm Production Workers in Manufacturing:	
New Hampshire	13
New Hampshire PMSAs	14
Average Hourly Earnings of Nonfarm Production Workers in Manufacturing:	
New Hampshire	15
New Hampshire PMSAs	16
Seasonally Adjusted Nonfarm Jobs by Industry	18
Benchmarked Local Area Unemployment Statistics	19
2001 Benchmarked Local Area Unemployment Statistics Report, New Hampshire and Counties	20

Nonfarm Benchmark Revised Employment Numbers

Total Nonfarm Employment



The Current Employment Statistics (CES) program surveys employers and then estimates nonfarm employment. These estimates are benchmarked with employment numbers from the Tax and Wage Quarterly report, submitted by New Hampshire employers. These tables, the final 2000 and preliminary 2001 benchmarks for nonfarm employment, incorporate wage and employment data from New Hampshire employers whose workers are covered by Unemployment Compensation.

Final 2000

The 2000 final benchmark set average annual employment at 622,100, an increase of 16,300 jobs from the final 1999 number. This was 1,300 more jobs than had been recorded in the preliminary 2000 benchmark. Private industries increased by 800 jobs and Government added the other 500 in the benchmark adjustment.

There was virtually no variance between the preliminary 2000 and final 2000 benchmarks during the first half of the year. From July through Decem-

ber, revisions pushed preliminary benchmarks upward, with differences ranging from 900 jobs in July to 4,400 jobs in December.

Within the divisions, nearly all the difference was in Manufacturing. It had a 900 job jump. The adjustment was in durable goods, primarily in the manufacture of Electronics and other electrical equipment.

Preliminary 2001

Preliminary benchmarking of 2001 employment levels estimated nonfarm employment at 627,000. This was up 4,900 jobs over 2000 and up 21,200 over 1999. The largest divisional over-the-year employment gain between the 2001 preliminary and 2000 final benchmarks was in Services - up 3,700 jobs. Construction added 1,700 jobs, the next highest gain. The largest loss (-2,800) was in Manufacturing. Transportation and public utilities also lost jobs, down 400. Construction had the largest percentage increase - up 6.8 percent.

Total nonfarm employment increased only 2,600 jobs over the revised monthly numbers. That adjustment was less than one-half of one percent. Every month in 2001 varied upward from the prebenchmark estimates, ranging from 600 in July to 4,400 in December.

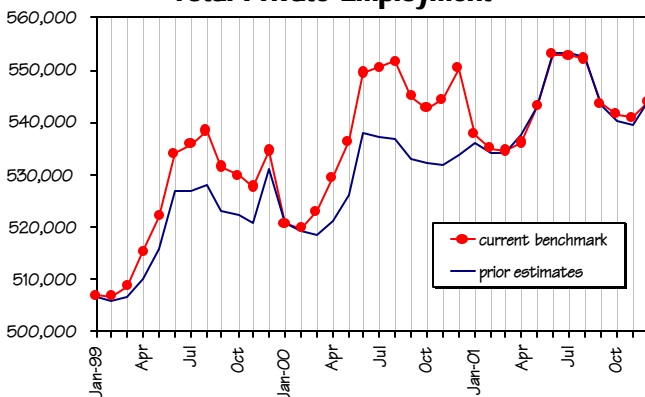
Benchmarked divisions

Construction

The 2000 final benchmark 12-month average was unchanged from the preliminary. Employment remained at 25,000. The increase over the 1999 final benchmark was 700. Employment in 2000 peaked in August, two months later than is typical, with 27,000 jobs.

The preliminary benchmarked estimate for Construction in 2001 was 26,700, a gain of 1,700 jobs. This was 900 more than the average of the revised monthly estimates during 2001. Employment exceeded 28,000 for six consecutive months - June through November, peaking at 28,700 in July. From May on, the preliminary benchmark exceeded revised estimates by 900 or more, reaching 2,000 in the final two months of the year.

Total Private Employment



Manufacturing

The final benchmark for 2000 estimated Manufacturing employment at 106,700, unchanged from 1999. This was above the preliminary benchmark by 900 jobs. As the year evolved the differences between preliminary and final 2000 benchmark estimates expanded. Third quarter estimates were somewhat understated with August missing the mark by 1,500 and September by 1,400. Most of the differences, however, were in the fourth quarter. These three months were benchmarked upward 2,100, 2,600, and 2,800 respectively. The gap between Durable goods and Nondurable goods manufacturing widened even more with the benchmark. Durable goods increased an additional 1,300 jobs to 76,900. The upward movement was propelled by Electronic and other electrical equipment which expanded by 700 more jobs to 21,300. Nondurables fell another 200 to 29,900.

The 2001 preliminary benchmark revised average monthly estimates upward 1,700 jobs to 103,900. This set the estimated job loss in 2001 at 2,800. Analysis of claims for unemployment benefits in the second half of the year hinted that there may be an even larger over-the-year loss. Durable goods were benchmarked up 2,600 jobs to 75,700 and nondurables went down an additional 800 to 28,200. As in 2000, much of the change from the revised 12-month average in durable goods was in the manufacture of electronics.

Transportation and Public Utilities

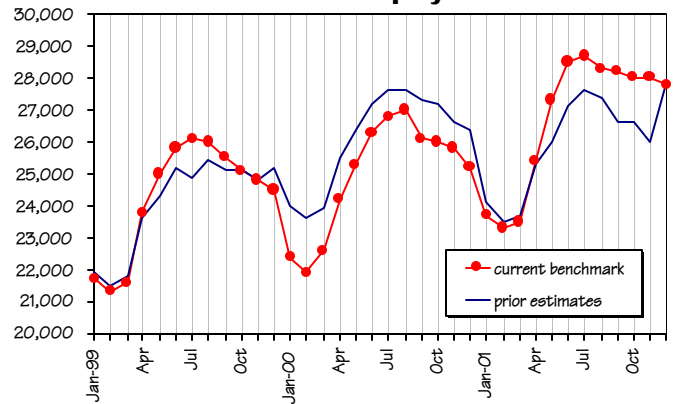
In 2000 Transportation and public utilities increased by 400 jobs over-the-year to 21,900. This was 100 more jobs than estimated in the preliminary benchmark. Most of the growth was in the Transportation major groups, up 300 jobs.

Preliminary 2001 estimated employment at 21,500, a return to the 1999 level. This was 200 below the 12-month average of revised estimates. The Transportation major groups fell by 600 jobs over-the-year.

Wholesale Trade

After quite a ride, employment growth in Wholesale trade has slowed to a trickle. In every year

Construction Employment



since 1996, growth in this division has been at least 1,300 jobs. In the final benchmark of 2000 employment data there were 32,600 jobs in Wholesale trade. This was 900 more than in 1999, and 300 below the preliminary 2000 benchmark.

The 2001 preliminary benchmark fell shy of the original 12-month average by 500 jobs. Employment in this division was unchanged over-the-year.

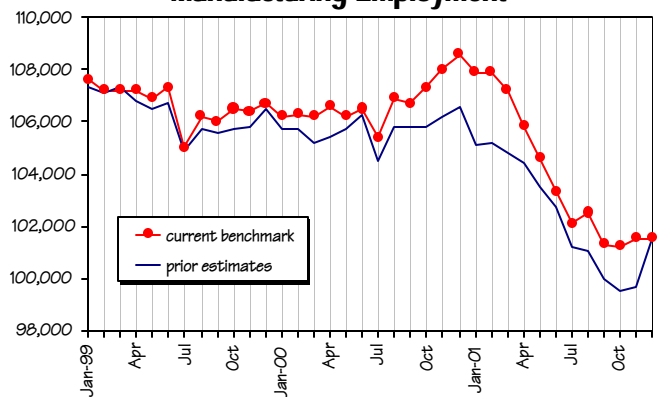
Retail Trade

The final benchmark for 2000 in Retail trade was incredibly right on the preliminary. At 131,600, the division added 3,200 jobs, far short of the 6,100 gain between 1998 and 1999. All the major groups saw some growth, led by General merchandise stores with a 900 job increase. Eating and drinking places followed closely with 700.

The preliminary benchmark for 2001 showed the division growing at an even slower pace. It added only 1,000 jobs in 2001 bringing employment to

Continued on page 17

Manufacturing Employment



New Hampshire Nonfarm Employment by Industry
2001 Preliminary Benchmark

SIC Code	Industry	Annual Average	Jan	Feb	Mar
	Total Nonfarm	627,000	622,400	622,200	621,900
	Total Private	542,900	537,800	535,000	534,500
	Goods Producing	131,100	132,000	131,600	131,100
10-14	Mining	500	400	400	400
15-17	Construction	26,700	23,700	23,300	23,500
15	General Building Contractor	6,700	6,200	6,000	6,100
16	Heavy Construction	2,900	2,200	2,200	2,200
17	Special Trade	17,100	15,300	15,100	15,200
20-39	Manufacturing	103,900	107,900	107,900	107,200
	Durable Goods	75,700	78,800	78,900	78,300
24-25	Lumber, Wood, & Furniture	5,300	5,500	5,400	5,300
32	Stone, Clay, Glass	2,500	2,400	2,400	2,400
33	Primary Metal Industries	5,200	5,400	5,400	5,300
34	Fabricated Metal	8,200	8,700	8,600	8,500
35	Industrial Machinery	16,900	17,500	17,400	17,400
36	Electronic Equipment	21,000	22,600	23,100	22,700
38	Instruments & Related Equipment	10,800	10,700	10,800	10,800
	Nondurable Goods	28,200	29,100	29,000	28,900
20	Food & Kindred Products	2,800	2,700	2,800	2,800
22-23	Textile Mill, Apparel	3,300	3,400	3,300	3,300
26	Paper & Allied	4,200	4,200	4,200	4,100
27	Printing & Publishing	7,100	7,100	7,100	7,200
30	Rubber & Misc. Plastic	7,700	8,400	8,300	8,200
31	Leather, Leather Products	1,400	1,500	1,500	1,500
	Service Producing	495,900	490,400	490,600	490,800
	Private Service Producing	411,800	405,800	403,400	403,400
40-49	Transport & Public Utilities	21,500	21,400	21,500	21,500
40-47	Transportation	13,100	12,900	13,000	13,000
48-49	Communications & Utilities	8,500	8,500	8,500	8,500
	Trade	165,200	163,200	160,000	159,400
50-51	Wholesale Trade	32,600	32,500	32,500	32,400
52-59	Retail Trade	132,600	130,700	127,500	127,000
53	General Merchandise	16,500	17,300	15,900	15,800
54	Food Stores	22,400	22,100	21,900	21,600
55	Automotive Dealers	14,600	14,100	14,100	14,300
57	Furniture, Home furnishings, Equipment	6,100	6,200	6,100	6,100
58	Eating & Drinking	39,500	36,600	36,600	36,600
60-67	Finance, Insurance, Real Estate	33,700	33,100	33,200	33,500
63-64	Insurance	13,800	13,800	13,800	13,800
70-89	Services	191,300	188,100	188,700	189,000
70	Hotels & Other Lodging	9,600	8,600	8,600	8,500
73	Business Services	34,700	36,400	35,500	35,600
80	Health Services	53,400	52,000	52,500	52,800
806	Hospitals	21,400	20,700	21,000	21,100
	Total Government	84,200	84,600	87,200	87,400
	Federal	8,200	8,200	8,100	8,100
	State	21,700	20,400	22,700	22,500
	Local	54,200	56,000	56,400	56,800

*Estimates are not published for all industries

New Hampshire Nonfarm Employment by Industry
2001 Preliminary Benchmark

SIC Code	Apr	May	Jun	July	Aug	Sep	Oct	Nov	Dec
	623,300	630,300	636,200	627,400	626,200	627,500	628,000	627,800	630,900
	536,100	543,100	553,000	552,900	552,100	543,500	541,600	540,900	543,800
	131,600	132,400	132,300	131,300	131,300	130,000	129,700	130,000	129,800
10-14	400	500	500	500	500	500	500	500	500
15-17	25,400	27,300	28,500	28,700	28,300	28,200	28,000	28,000	27,800
15	6,300	6,600	7,000	7,200	7,000	6,900	6,900	6,900	6,900
16	2,600	3,300	3,400	3,400	3,300	3,200	3,200	3,100	2,900
17	16,500	17,400	18,100	18,100	18,000	18,100	17,900	18,000	18,000
20-39	105,800	104,600	103,300	102,100	102,500	101,300	101,200	101,500	101,500
	77,000	76,200	75,200	74,300	74,600	73,800	73,600	73,900	73,800
24	5,200	5,200	5,300	5,300	5,400	5,400	5,300	5,100	5,200
32	2,500	2,500	2,500	2,600	2,600	2,500	2,500	2,500	2,500
33	5,300	5,200	5,200	5,200	5,200	5,100	5,000	4,900	4,900
34	8,300	8,200	8,100	7,800	8,000	8,000	7,900	8,000	8,000
35	17,300	17,100	16,900	16,500	16,400	16,400	16,600	16,600	16,700
36	21,900	21,400	20,500	20,300	20,400	19,800	19,800	20,100	19,800
38	10,700	10,800	10,800	10,900	10,900	10,900	10,800	10,800	11,000
	28,800	28,400	28,100	27,800	27,900	27,500	27,600	27,600	27,700
20	2,900	2,900	2,800	2,900	2,800	2,800	2,900	2,800	2,900
22	3,300	3,400	3,300	3,200	3,300	3,200	3,200	3,100	3,100
26	4,200	4,200	4,100	4,200	4,200	4,100	4,100	4,100	4,100
27	7,100	7,100	7,200	7,100	7,100	7,100	7,100	7,200	7,100
30	8,000	7,700	7,500	7,500	7,500	7,300	7,300	7,400	7,500
31	1,500	1,500	1,500	1,200	1,300	1,300	1,300	1,300	1,300
	491,700	497,900	503,900	496,100	494,900	497,500	498,300	497,800	501,100
	404,500	410,700	420,700	421,600	420,800	413,500	411,900	410,900	414,000
40-49	21,600	21,900	22,200	20,900	20,800	21,700	21,600	21,500	21,600
40-47	13,200	13,500	13,700	12,400	12,400	13,200	13,100	13,000	13,200
48-49	8,400	8,400	8,500	8,500	8,400	8,500	8,500	8,500	8,400
	161,100	164,600	168,900	170,000	169,000	165,100	165,700	166,900	168,500
50-51	32,500	32,700	33,100	33,000	32,800	32,400	32,500	32,600	32,700
52-59	128,600	131,900	135,800	137,000	136,200	132,700	133,200	134,300	135,800
53	15,700	16,100	16,400	16,300	16,200	16,100	16,700	17,600	17,900
54	22,000	22,300	22,800	22,800	22,900	22,400	22,500	22,700	22,800
55	14,400	14,700	14,800	14,800	14,800	14,800	14,800	14,900	15,000
57	6,100	5,900	6,000	5,900	5,900	6,100	6,200	6,200	6,300
58	37,900	39,600	42,100	43,700	43,000	40,500	39,700	38,700	38,700
60-67	33,600	33,800	34,200	34,200	34,100	33,700	33,700	33,700	33,800
63-64	13,800	13,900	13,900	13,800	13,800	13,600	13,600	13,600	13,600
70-89	188,200	190,400	195,400	196,500	196,900	193,000	190,900	188,800	190,100
70	7,900	8,800	10,700	12,600	12,700	10,700	9,400	8,300	8,400
73	34,800	34,800	34,800	34,300	34,300	34,200	34,100	33,800	33,700
80	52,800	53,200	53,700	53,800	53,900	53,800	53,800	54,000	54,000
806	21,100	21,300	21,500	21,600	21,700	21,600	21,700	21,700	21,700
	87,200	87,200	83,200	74,500	74,100	84,000	86,400	86,900	87,100
	8,000	8,100	8,200	8,300	8,300	8,200	8,200	8,200	8,400
	23,000	22,400	19,600	20,100	20,000	22,100	23,100	22,800	22,200
	56,200	56,700	55,400	46,100	45,800	53,700	55,100	55,900	56,500

Note: Because estimates are rounded to the nearest hundred, totals may not add.

New Hampshire Nonfarm Employment by Industry
2000 Final Benchmark

SIC Code	Industry	Annual Average	Jan	Feb	Mar
	Total Nonfarm	622,100	603,300	605,700	609,600
	Total Private	538,600	520,700	519,800	522,900
	Goods Producing	132,100	129,000	128,500	129,200
10-14	Mining	400	400	300	400
15-17	Construction	25,000	22,400	21,900	22,600
15	General Building Contractor	6,300	6,000	6,000	6,100
16	Heavy Construction	2,500	1,900	1,800	2,000
17	Special Trade	16,100	14,500	14,100	14,500
20-39	Manufacturing	106,700	106,200	106,300	106,200
	Durable Goods	76,900	75,800	76,200	76,200
24-25	Lumber, Wood, & Furniture	5,700	5,800	5,700	5,800
32	Stone, Clay, Glass	2,500	2,400	2,400	2,400
33	Primary Metal Industries	5,400	5,300	5,300	5,300
34	Fabricated Metal	8,400	8,300	8,200	8,300
35	Industrial Machinery	17,000	16,900	17,100	16,700
36	Electronic Equipment	21,300	20,700	20,900	21,100
38	Instruments & Related Equipment	10,300	10,300	10,200	10,300
	Nondurable Goods	29,900	30,400	30,100	30,000
20	Food & Kindred Products	2,800	2,700	2,800	2,800
22-23	Textile Mill, Apparel	3,700	3,900	3,800	3,800
26	Paper & Allied	4,300	4,400	4,400	4,400
27	Printing & Publishing	7,300	7,400	7,300	7,400
30	Rubber & Misc. Plastic	8,500	8,600	8,500	8,400
31	Leather, Leather Products	1,600	1,800	1,800	1,800
	Service Producing	490,000	474,300	477,200	480,400
	Private Service Producing	406,500	391,700	391,300	393,700
40-49	Transport & Public Utilities	21,900	21,700	21,600	21,200
40-47	Transportation	13,700	13,600	13,400	13,300
48-49	Communications & Utilities	8,200	8,100	8,200	7,900
	Trade	164,200	159,600	157,700	158,500
50-51	Wholesale Trade	32,600	31,900	31,900	32,100
52-59	Retail Trade	131,600	127,700	125,800	126,400
53	General Merchandise	17,100	17,200	16,400	16,300
54	Food Stores	22,300	22,200	21,900	21,900
55	Automotive Dealers	14,200	13,800	13,800	14,000
57	Furniture, Home furnishings, Equipment	6,100	6,100	6,000	6,000
58	Eating & Drinking	38,700	35,200	35,700	36,200
60-67	Finance, Insurance, Real Estate	32,700	32,500	32,300	32,300
63-64	Insurance	13,600	13,800	13,800	13,700
70-89	Services	187,600	177,900	179,700	181,700
70	Hotels & Other Lodging	9,400	8,200	8,200	8,100
73	Business Services	35,900	32,900	33,300	34,200
80	Health Services	51,300	50,500	50,600	51,000
806	Hospitals	20,300	19,800	19,900	20,100
	Total Government	83,500	82,600	85,900	86,700
	Federal	8,200	7,900	8,000	8,900
	State	21,500	20,000	22,700	22,300
	Local	53,800	54,700	55,200	55,500

*Estimates are not published for all industries

New Hampshire Nonfarm Employment by Industry
2000 Final Benchmark

SIC Code	Apr	May	Jun	July	Aug	Sep	Oct	Nov	Dec
	615,900	623,600	631,500	624,900	624,600	628,900	628,700	631,600	636,900
	529,500	536,400	549,400	550,500	551,700	544,900	542,700	544,400	550,300
	131,300	132,000	133,300	132,700	134,300	133,200	133,700	134,200	134,200
10-14	500	500	500	500	400	400	400	400	400
15-17	24,200	25,300	26,300	26,800	27,000	26,100	26,000	25,800	25,200
15	6,200	6,300	6,500	6,600	6,700	6,400	6,500	6,400	6,300
16	2,400	2,700	2,800	2,800	2,900	2,800	2,700	2,700	2,500
17	15,600	16,300	17,000	17,400	17,400	16,900	16,800	16,700	16,400
20-39	106,600	106,200	106,500	105,400	106,900	106,700	107,300	108,000	108,600
	76,200	75,900	76,500	75,900	77,300	77,300	77,800	78,500	78,900
24	5,700	5,800	5,800	5,700	5,800	5,700	5,700	5,600	5,700
32	2,400	2,500	2,500	2,400	2,400	2,500	2,500	2,500	2,500
33	5,500	5,500	5,500	5,500	5,500	5,600	5,500	5,400	5,400
34	8,300	8,300	8,400	8,100	8,400	8,500	8,600	8,700	8,800
35	16,700	16,800	16,900	17,000	17,200	16,900	17,100	17,300	17,400
36	21,000	20,500	20,800	21,100	21,200	21,600	21,900	22,200	22,600
38	10,300	10,400	10,400	9,900	10,400	10,400	10,400	10,600	10,500
40	30,400	30,300	30,000	29,500	29,600	29,400	29,500	29,500	29,700
	2,800	2,800	2,900	2,800	2,800	2,800	2,900	2,900	3,000
22	3,800	3,800	3,800	3,700	3,700	3,700	3,600	3,500	3,500
26	4,300	4,300	4,300	4,100	4,200	4,200	4,200	4,200	4,300
27	7,400	7,300	7,400	7,300	7,300	7,300	7,200	7,200	7,200
30	8,700	8,500	8,300	8,500	8,500	8,300	8,400	8,500	8,500
31	1,800	1,800	1,700	1,400	1,500	1,500	1,500	1,500	1,500
	484,600	491,600	498,200	492,200	490,300	495,700	495,000	497,400	502,700
	398,200	404,400	416,100	417,800	417,400	411,700	409,000	410,200	416,100
40-49	21,900	22,000	22,500	21,600	20,500	22,400	22,700	22,600	22,500
40-47	13,600	13,700	14,100	13,200	13,200	14,000	14,200	14,100	14,100
48-49	8,300	8,300	8,400	8,400	7,300	8,400	8,500	8,500	8,400
	160,200	163,500	168,100	168,900	168,300	164,400	164,000	166,600	170,300
50-51	32,200	32,900	33,200	33,000	33,000	32,700	32,600	32,600	32,900
52-59	128,000	130,600	134,900	135,900	135,300	131,700	131,400	134,000	137,400
53	16,600	16,700	16,900	16,900	16,800	16,600	16,900	18,500	19,300
54	22,000	22,300	22,900	22,700	22,700	22,000	22,000	22,200	22,600
55	14,200	14,300	14,400	14,400	14,300	14,300	14,200	14,100	14,100
57	6,000	5,900	6,000	6,000	6,000	5,900	6,100	6,200	6,500
58	37,200	38,600	41,400	43,100	42,500	40,300	39,000	37,800	37,800
60-67	32,400	32,600	33,000	33,000	33,000	32,700	32,800	32,900	33,200
63-64	13,700	13,700	13,700	13,500	13,500	13,500	13,500	13,500	13,600
70-89	183,700	186,300	192,500	194,300	195,600	192,200	189,500	188,100	190,100
70	7,500	8,500	10,200	12,400	12,900	10,400	9,600	8,100	8,400
73	35,100	36,000	36,700	36,200	37,100	36,900	37,200	37,600	37,900
80	51,000	51,200	51,600	51,400	51,600	51,500	51,400	51,900	52,200
806	20,100	20,200	20,400	20,300	20,400	20,500	20,200	20,500	20,700
	86,400	87,200	82,100	74,400	72,900	84,000	86,000	87,200	86,600
	8,500	9,800	8,600	8,400	7,900	7,700	7,600	7,600	7,700
	23,000	22,200	19,500	19,700	19,400	21,500	22,900	22,800	21,500
	54,900	55,200	54,000	46,300	45,600	54,800	55,500	56,800	57,400

Note: Because estimates are rounded to the nearest hundred, totals may not add.

Manchester, NH, PMSA, Nonfarm Employment by Industry
Jobs, by Place of Employment, based on latest available data including *covered* employment

Industry	Average	2001 (preliminary benchmark)											
		Jan	Feb	Mar	Apr	May	Jun	Jul	Aug	Sep	Oct	Nov	Dec
Total Nonfarm	108,000	108,500	107,700	107,900	107,800	108,500	109,300	107,800	107,300	107,400	107,800	107,600	108,300
Total Private	96,400	96,900	95,900	96,100	96,100	96,700	97,300	96,900	96,900	95,800	95,900	95,900	96,300
Goods Producing	19,300	19,800	19,600	19,600	19,700	19,700	19,700	19,700	19,500	18,900	18,700	18,500	18,400
Construction and Mining	5,200	4,800	4,800	4,800	5,100	5,300	5,500	5,600	5,600	5,500	5,400	5,300	5,200
Manufacturing	14,100	15,000	14,800	14,800	14,600	14,400	14,200	14,100	13,900	13,400	13,300	13,200	13,200
Durable Goods	9,800	10,700	10,500	10,400	10,200	10,100	9,900	9,800	9,600	9,200	9,100	9,100	9,000
Machinery & Electrical Equipment	3,700	4,200	4,100	4,100	3,900	3,800	3,600	3,500	3,400	3,300	3,300	3,300	3,300
Service Producing	88,700	88,700	88,100	88,300	88,100	88,800	89,600	88,100	87,800	88,500	89,100	89,100	89,900
Private Service Producing	77,100	77,100	76,300	76,500	76,400	77,000	77,600	77,200	77,400	76,900	77,200	77,400	77,900
Transport & Public Utilities	6,600	6,500	6,500	6,400	6,500	6,500	6,500	6,500	6,500	6,700	6,700	6,600	6,800
Trade	26,700	26,900	26,300	26,400	26,300	26,700	26,700	26,800	26,700	26,500	26,700	27,200	27,600
Wholesale Trade	7,200	7,200	7,200	7,200	7,200	7,200	7,200	7,300	7,200	7,100	7,100	7,200	7,200
Retail Trade	19,500	19,700	19,100	19,200	19,100	19,500	19,500	19,500	19,500	19,400	19,600	20,000	20,400
Finance, Insurance & Real Estate	8,200	8,000	8,000	8,100	8,100	8,100	8,200	8,200	8,300	8,200	8,200	8,300	8,200
Services	35,600	35,700	35,500	35,600	35,500	35,700	36,200	35,700	35,900	35,500	35,600	35,300	35,300
Total Government	11,600	11,600	11,800	11,800	11,700	11,800	12,000	10,900	10,400	11,600	11,900	11,700	12,000
Federal	2,500	2,600	2,600	2,600	2,600	2,500	2,500	2,500	2,500	2,500	2,500	2,500	2,600
State	1,300	1,100	1,300	1,300	1,200	1,300	1,200	1,200	1,100	1,300	1,500	1,400	1,400
Local	7,800	7,900	7,900	7,900	7,900	8,000	8,300	7,200	6,800	7,800	7,900	7,800	8,000

Industry	Average	2000 (final benchmark)											
		Jan	Feb	Mar	Apr	May	Jun	Jul	Aug	Sep	Oct	Nov	Dec
Total Nonfarm	106,700	105,000	104,800	105,200	106,700	106,600	107,500	105,900	105,400	107,000	107,700	108,900	109,800
Total Private	95,200	93,300	92,900	93,300	94,900	94,700	96,000	95,500	95,300	95,500	96,000	97,100	98,200
Goods Producing	20,100	19,600	19,400	19,600	20,200	20,300	20,300	20,300	20,200	20,100	20,100	20,200	20,300
Construction and Mining	5,100	4,700	4,600	4,700	5,000	5,200	5,300	5,300	5,300	5,200	5,200	5,200	5,100
Manufacturing	15,000	14,900	14,800	14,900	15,200	15,100	15,000	15,000	14,900	14,900	14,900	15,000	15,200
Durable Goods	10,500	10,400	10,400	10,500	10,600	10,600	10,600	10,500	10,500	10,500	10,500	10,600	10,800
Machinery & Electrical Equipment	4,200	4,100	4,100	4,200	4,300	4,300	4,300	4,300	4,200	4,200	4,100	4,100	4,200
Service Producing	86,700	85,400	85,400	85,600	86,500	86,300	87,200	85,600	85,200	86,900	87,600	88,700	89,500
Private Service Producing	75,200	73,700	73,500	73,700	74,700	74,400	75,700	75,200	75,100	75,400	75,900	76,900	77,900
Transport & Public Utilities	6,100	6,200	6,100	5,800	6,100	6,100	6,200	6,000	5,600	6,200	6,300	6,200	6,300
Trade	25,900	25,400	25,300	25,400	25,400	25,500	25,900	25,700	25,800	25,600	25,900	26,900	27,500
Wholesale Trade	7,100	7,000	7,100	7,100	7,200	7,200	7,200	7,100	7,100	7,000	7,000	7,000	7,100
Retail Trade	18,800	18,400	18,200	18,300	18,200	18,300	18,700	18,600	18,700	18,600	18,900	19,900	20,400
Finance, Insurance & Real Estate	7,900	7,800	7,700	7,700	7,800	7,800	8,000	8,100	8,000	8,000	8,000	8,000	8,100
Services	35,300	34,300	34,400	34,800	35,400	35,000	35,600	35,400	35,700	35,600	35,700	35,800	36,000
Total Government	11,500	11,700	11,900	11,900	11,800	11,900	11,500	10,400	10,100	11,500	11,700	11,800	11,600
Federal	2,700	2,600	2,700	2,700	2,700	2,800	2,700	2,700	2,600	2,600	2,600	2,600	2,700
State	1,200	1,200	1,300	1,300	1,200	1,200	1,200	1,200	1,100	1,300	1,300	1,300	1,200
Local	7,600	7,900	7,900	7,900	7,900	7,900	7,600	6,500	6,400	7,600	7,800	7,900	7,700

Nashua, NH, PMSA, Nonfarm Employment by Industry
Jobs, by Place of Employment, based on latest available data including *covered* employment

Industry	Average	2001 (preliminary benchmark)											
		Jan	Feb	Mar	Apr	May	Jun	Jul	Aug	Sep	Oct	Nov	Dec
Total Nonfarm	99,900	99,600	99,600	99,800	100,300	99,900	100,600	99,200	99,500	99,700	99,300	100,300	100,700
Total Private	90,300	90,000	89,900	90,100	90,600	90,200	90,800	90,800	90,800	90,100	89,400	90,300	90,600
Goods Producing	31,400	31,800	32,100	31,900	31,800	31,300	31,000	31,300	31,300	31,000	30,700	31,400	31,400
Construction and Mining	3,500	3,300	3,300	3,400	3,600	3,500	3,600	3,700	3,700	3,600	3,500	3,300	3,300
Manufacturing	27,900	28,500	28,800	28,500	28,200	27,800	27,400	27,600	27,600	27,400	27,200	28,100	28,100
Durable Goods	22,600	23,000	23,300	23,000	22,700	22,400	22,100	22,400	22,400	22,200	22,000	22,700	22,700
Machinery & Electrical Equipment	4,000	4,100	4,100	4,000	4,100	4,000	3,900	3,900	3,900	3,900	3,900	3,900	3,900
Nondurable Goods	5,400	5,500	5,500	5,500	5,500	5,400	5,300	5,200	5,200	5,200	5,200	5,400	5,400
Service Producing	68,500	67,800	67,500	67,900	68,500	68,600	69,600	67,900	68,200	68,700	68,600	68,900	69,300
Private Service Producing	58,900	58,200	57,800	58,200	58,800	58,900	59,800	59,500	59,500	59,100	58,700	58,900	59,200
Transport & Public Utilities	2,300	2,300	2,300	2,300	2,400	2,400	2,400	2,300	2,200	2,300	2,300	2,300	2,400
Trade	25,400	25,600	24,900	24,900	25,100	25,100	25,400	25,600	25,600	25,600	25,400	25,700	26,200
Wholesale Trade	4,500	4,700	4,700	4,600	4,600	4,500	4,500	4,500	4,400	4,400	4,400	4,400	4,300
Retail Trade	20,900	20,900	20,200	20,300	20,500	20,600	20,900	21,100	21,200	21,200	21,000	21,300	21,900
Finance, Insurance & Real Estate	6,300	6,200	6,300	6,400	6,300	6,300	6,400	6,200	6,400	6,200	6,200	6,300	6,200
Services	24,900	24,100	24,300	24,600	25,000	25,100	25,600	25,400	25,300	25,000	24,800	24,600	24,400
Total Government	9,600	9,600	9,700	9,700	9,700	9,700	9,800	8,400	8,700	9,600	9,900	10,000	10,100
Federal	1,600	1,600	1,600	1,600	1,600	1,600	1,600	1,600	1,600	1,600	1,600	1,600	1,600
State	500	500	500	500	500	500	500	500	500	600	600	600	600
Local	7,400	7,500	7,600	7,600	7,600	7,600	7,700	6,300	6,600	7,400	7,700	7,800	7,900

Industry	Average	2000 (final benchmark)											
		Jan	Feb	Mar	Apr	May	Jun	Jul	Aug	Sep	Oct	Nov	Dec
Total Nonfarm	99,500	97,400	97,200	98,100	98,800	99,800	101,200	98,700	99,200	99,600	100,200	101,300	102,500
Total Private	90,600	88,600	88,300	89,200	89,900	90,700	92,000	90,600	91,100	90,700	91,000	92,200	93,200
Goods Producing	31,300	30,700	30,600	30,800	31,000	31,200	31,600	31,300	31,600	31,600	31,700	31,900	31,900
Construction and Mining	3,400	3,200	3,100	3,200	3,300	3,400	3,500	3,600	3,500	3,500	3,400	3,300	3,200
Manufacturing	28,000	27,500	27,500	27,600	27,700	27,800	28,100	27,700	28,100	28,100	28,300	28,600	28,700
Durable Goods	22,100	21,400	21,400	21,500	21,700	21,800	22,200	22,100	22,400	22,400	22,600	22,900	23,000
Machinery & Electrical Equipment	4,100	4,200	4,200	4,200	4,200	4,200	4,100	4,100	4,100	3,900	4,000	4,000	4,000
Nondurable Goods	5,900	6,100	6,100	6,100	6,000	6,000	5,900	5,600	5,700	5,700	5,700	5,700	5,700
Service Producing	68,200	66,700	66,600	67,300	67,800	68,600	69,600	67,400	67,600	68,000	68,500	69,400	70,600
Private Service Producing	59,300	57,900	57,700	58,400	58,900	59,500	60,400	59,300	59,500	59,100	59,300	60,300	61,300
Transport & Public Utilities	3,200	3,200	3,100	3,100	3,200	3,200	3,200	3,000	2,900	3,100	3,300	3,400	3,400
Trade	25,600	25,300	25,000	25,200	25,500	25,700	25,900	25,600	25,500	25,100	25,300	26,000	26,900
Wholesale Trade	4,700	4,700	4,700	4,700	4,700	4,700	4,700	4,700	4,700	4,700	4,800	4,800	4,800
Retail Trade	20,900	20,600	20,300	20,500	20,800	21,000	21,200	20,900	20,800	20,400	20,500	21,200	22,100
Finance, Insurance & Real Estate	5,900	5,700	5,800	5,800	5,700	5,800	5,900	5,800	5,900	5,900	6,100	6,200	6,200
Services	24,600	23,700	23,800	24,300	24,500	24,800	25,400	24,900	25,200	25,000	24,600	24,700	24,800
Total Government	8,900	8,800	8,900	8,900	8,900	9,100	9,200	8,100	8,100	8,900	9,200	9,100	9,300
Federal	1,200	1,100	1,200	1,200	1,200	1,400	1,300	1,300	1,300	1,000	1,000	1,000	1,000
State	500	500	500	500	500	500	500	500	500	500	600	500	600
Local	7,200	7,200	7,200	7,200	7,200	7,200	7,400	6,300	6,300	7,400	7,600	7,600	7,700

Portsmouth-Rochester, NH-ME, PMSA, Nonfarm Employment by Industry
Jobs, by Place of Employment, based on latest available data including *covered* employment

Industry	Average	2001 (preliminary benchmark)											
		Jan	Feb	Mar	Apr	May	Jun	Jul	Aug	Sep	Oct	Nov	Dec
Total Nonfarm	126,200	123,400	124,000	123,500	125,500	127,600	128,000	126,700	126,100	127,000	127,200	127,900	127,800
Total Private	103,000	100,500	100,300	100,000	101,600	103,700	105,800	105,600	105,400	103,800	102,800	103,200	103,500
Goods Producing	22,200	22,400	22,500	22,500	22,500	22,600	22,600	22,000	22,200	22,100	21,800	21,600	21,600
Construction and Mining	4,100	3,800	3,800	3,800	4,000	4,100	4,300	4,400	4,400	4,400	4,200	4,200	4,200
Manufacturing	18,100	18,600	18,700	18,700	18,500	18,500	18,300	17,600	17,800	17,700	17,600	17,400	17,400
Durable Goods	11,700	12,100	12,200	12,200	12,000	11,900	11,700	11,200	11,500	11,400	11,300	11,200	11,100
Nondurable Goods	6,400	6,500	6,500	6,500	6,500	6,600	6,600	6,400	6,300	6,300	6,300	6,200	6,300
Service Producing	104,000	101,000	101,500	101,000	103,000	105,000	105,400	104,700	103,900	104,900	105,400	106,300	106,200
Private Service Producing	80,900	78,100	77,800	77,500	79,100	81,100	83,200	83,600	83,200	81,700	81,000	81,600	81,900
Transportation and Public Utilities	4,300	4,200	4,200	4,200	4,200	4,300	4,400	4,200	4,200	4,300	4,300	4,200	4,300
Trade	33,600	32,200	31,800	31,400	32,500	33,400	34,400	35,200	34,900	34,000	34,100	34,700	34,800
Wholesale Trade	6,200	6,100	6,000	6,100	6,200	6,200	6,300	6,400	6,300	6,200	6,200	6,200	6,200
Retail Trade	27,400	26,100	25,800	25,300	26,300	27,200	28,100	28,800	28,600	27,800	27,900	28,500	28,600
Finance, Insurance and Real Estate	6,500	6,500	6,400	6,500	6,600	6,600	6,700	6,500	6,500	6,400	6,300	6,300	6,400
Services	36,500	35,200	35,400	35,400	35,800	36,800	37,700	37,700	37,600	37,000	36,300	36,400	36,400
Total Government	23,200	22,900	23,700	23,500	23,900	23,900	22,200	21,100	20,700	23,200	24,400	24,700	24,300
Federal	5,600	5,600	5,500	5,500	5,500	5,500	5,600	5,700	5,800	5,700	5,700	5,700	5,800
State	6,000	5,700	6,600	6,300	6,700	6,500	4,800	5,200	5,000	5,900	6,700	6,700	6,200
Local	11,600	11,600	11,600	11,700	11,700	11,900	11,800	10,200	9,900	11,600	12,000	12,300	12,300

Industry	Average	2000 (final benchmark)											
		Jan	Feb	Mar	Apr	May	Jun	Jul	Aug	Sep	Oct	Nov	Dec
Total Nonfarm	124,200	118,500	120,300	121,300	124,300	126,500	126,100	125,400	125,000	125,900	125,500	126,100	125,800
Total Private	101,900	96,700	97,200	98,200	100,800	102,700	105,100	105,500	105,400	103,700	102,200	102,300	103,000
Goods Producing	22,600	22,400	22,400	22,700	22,900	22,700	22,700	22,300	22,700	22,700	22,600	22,700	22,900
Construction and Mining	4,000	3,700	3,600	3,700	3,900	4,100	4,200	4,300	4,200	4,100	4,000	4,000	4,100
Manufacturing	18,700	18,700	18,800	19,000	19,000	18,600	18,500	18,000	18,500	18,600	18,600	18,700	18,800
Durable Goods	11,900	12,000	12,100	12,200	12,100	11,600	11,600	11,300	11,800	11,900	12,000	12,100	12,100
Nondurable Goods	6,800	6,700	6,700	6,800	6,900	7,000	6,900	6,700	6,700	6,700	6,600	6,600	6,700
Service Producing	101,600	96,100	97,900	98,600	101,400	103,800	103,400	103,100	102,300	103,200	102,900	103,400	102,900
Private Service Producing	79,400	74,300	74,800	75,500	77,900	80,000	82,400	83,200	82,700	81,000	79,600	79,600	80,100
Transportation and Public Utilities	4,200	4,100	4,100	4,100	4,100	4,200	4,300	4,100	3,900	4,300	4,300	4,200	4,200
Trade	33,000	31,300	31,000	31,200	31,900	33,400	34,400	35,100	34,800	33,500	32,900	33,200	33,800
Wholesale Trade	6,100	5,800	5,700	5,800	5,700	6,300	6,300	6,300	6,200	6,200	6,100	6,100	6,100
Retail Trade	27,000	25,500	25,300	25,400	26,200	27,100	28,100	28,800	28,600	27,300	26,800	27,100	27,700
Finance, Insurance and Real Estate	6,500	6,400	6,400	6,400	6,500	6,500	6,600	6,600	6,600	6,600	6,500	6,500	6,500
Services	35,600	32,500	33,300	33,800	35,400	35,900	37,100	37,400	37,400	36,600	35,900	35,700	35,600
Total Government	22,300	21,800	23,100	23,100	23,500	23,800	21,000	19,900	19,600	22,200	23,300	23,800	22,800
Federal	5,600	5,300	5,400	5,800	5,700	6,300	5,700	5,700	5,600	5,400	5,500	5,500	5,500
State	5,900	5,600	6,600	6,300	6,600	6,300	4,800	5,100	4,900	5,700	6,600	6,700	5,800
Local	10,800	10,900	11,100	11,000	11,200	11,200	10,500	9,100	9,100	11,100	11,200	11,600	11,500

New Hampshire Average Weekly Hours of Nonfarm Production Workers in Manufacturing
by Place of Employment

Industry	Average	2001 (preliminary benchmark)											
		Jan	Feb	Mar	Apr	May	Jun	Jul	Aug	Sep	Oct	Nov	Dec
Manufacturing	41.1	41.2	40.8	41.1	40.2	40.6	40.2	40.1	40.3	41.0	40.8	42.7	43.8
Durable goods	42.1	42.6	42.2	42.5	40.8	41.3	40.8	40.7	40.5	41.6	41.9	44.5	46.2
Lumber, wood, furniture	39.5	39.3	38.9	38.8	39.8	40.8	40.2	39.8	39.2	37.0	37.9	39.8	43.1
Stone, clay, & glass products	41.8	39.0	38.4	42.2	39.1	40.2	39.6	38.5	46.1	48.0	43.7	42.2	44.2
Primary metal industries	41.9	44.3	43.4	45.4	41.6	41.9	40.1	40.5	40.2	41.4	40.4	41.2	42.1
Fabricated metal products	42.8	42.2	41.5	42.1	40.6	42.1	41.8	41.9	42.1	43.8	43.4	45.5	46.8
Industrial machinery	42.6	43.7	43.7	44.3	41.6	41.7	41.1	42.3	40.9	41.9	42.1	42.9	45.3
Electronic equipment	41.6	42.2	42.0	41.1	39.6	39.4	38.6	37.8	36.9	40.0	41.9	48.6	50.1
Instruments & related	40.9	41.4	40.3	40.2	39.4	40.0	41.1	39.9	41.1	42.3	41.0	41.9	42.5
Nondurable goods	38.5	37.7	37.6	37.7	38.7	39.0	38.9	38.6	39.8	39.6	38.3	38.2	37.9
Food & kindred products	38.4	36.5	36.4	37.4	36.8	37.6	36.9	38.6	38.6	40.0	40.0	40.9	40.9
Textile mill, apparel	35.6	31.3	30.9	32.1	34.1	35.6	36.8	37.2	38.3	38.3	38.2	37.1	37.1
Paper & allied products	41.9	39.9	41.0	39.9	44.7	43.0	42.9	45.4	46.8	42.7	40.5	38.0	38.4
Printing & publishing	36.1	36.6	36.7	36.9	37.9	37.4	37.3	33.1	35.8	35.1	33.7	36.6	36.7
Rubber & misc. plastics	39.2	40.3	39.8	39.8	39.7	41.1	40.3	40.3	40.5	40.8	38.3	35.3	34.5
Leather, leather products	34.1	34.1	34.1	34.1	34.1	34.1	34.1	34.1	34.1	34.1	34.1	34.1	34.1

Industry	Average	2000 (final benchmark)											
		Jan	Feb	Mar	Apr	May	Jun	Jul	Aug	Sep	Oct	Nov	Dec
Manufacturing	41.1	40.4	40.6	41.3	41.2	41.1	41.1	40.2	41.0	41.3	41.7	41.9	41.5
Durable goods	41.7	40.5	40.9	41.7	41.4	41.4	41.7	40.5	41.5	42.2	42.4	43.0	42.7
Lumber, wood, furniture	41.0	41.3	40.6	40.2	40.8	41.9	41.3	42.1	43.3	38.8	40.3	40.9	40.1
Stone, clay, & glass products	41.1	43.9	41.4	43.5	42.5	43.5	43.0	40.1	39.4	40.5	38.1	39.1	39.0
Primary metal industries	44.5	44.7	45.7	46.8	46.0	44.5	44.4	45.7	37.5	44.8	44.3	44.5	45.1
Fabricated metal products	42.0	42.4	42.2	42.8	41.7	40.9	41.3	41.3	40.3	42.3	43.0	42.0	43.7
Industrial machinery	42.4	39.2	40.4	40.4	40.9	42.3	43.2	43.1	43.4	43.5	43.5	44.1	44.5
Electronic equipment	41.5	40.2	40.3	42.3	41.8	41.0	41.5	40.6	41.0	41.3	41.8	43.3	42.4
Instruments & related	40.1	41.0	41.1	41.9	41.4	41.2	41.6	37.3	38.1	38.7	37.5	40.4	40.2
Nondurable goods	39.8	40.1	40.0	40.4	40.7	40.2	39.9	39.4	39.6	39.4	40.0	39.2	38.7
Food & kindred products	39.7	38.8	38.6	39.3	39.2	38.8	39.7	41.0	41.0	41.0	39.9	41.8	37.5
Textile mill, apparel	37.9	38.4	39.4	39.8	41.4	40.4	38.1	35.8	35.8	37.9	36.7	35.9	35.2
Paper & allied products	43.6	44.3	43.5	43.4	43.6	43.6	42.9	41.4	43.1	42.7	44.4	44.3	46.3
Printing & publishing	38.1	37.8	37.7	38.8	37.7	38.0	39.2	39.3	39.5	37.9	38.0	36.5	36.8
Rubber & misc. plastics	40.8	41.6	41.2	41.4	41.7	40.8	41.0	40.4	40.5	39.9	42.1	39.9	38.9
Leather, leather products	34.8	35.3	34.9	34.8	36.7	36.7	34.1	34.1	34.1	34.1	34.1	34.1	34.1

**2001 (preliminary benchmark) Average Weekly Hours of Nonfarm Production Workers in Manufacturing
by Place of Employment**

Industry	Average	Manchester, NH, PMSA											
		Jan	Feb	Mar	Apr	May	Jun	Jul	Aug	Sep	Oct	Nov	Dec
Manufacturing	40.0	40.8	40.0	40.4	40.6	41.0	39.9	40.1	41.5	39.2	37.8	38.1	39.8
Durable Goods	42.2	43.0	42.9	42.6	43.0	43.6	42.2	42.2	44.2	40.8	39.6	39.7	42.3
Machinery & Electrical Equipment	40.4	41.7	40.9	39.6	42.0	43.0	39.6	38.5	40.9	40.9	37.0	37.9	42.8

Industry	Average	Nashua, NH, PMSA											
		Jan	Feb	Mar	Apr	May	Jun	Jul	Aug	Sep	Oct	Nov	Dec
Manufacturing	39.4	39.4	39.7	39.7	38.9	39.0	40.0	39.3	39.4	40.1	39.6	38.7	39.0
Durable Goods	38.3	38.7	38.6	39.1	38.1	38.4	39.7	38.5	38.3	39.0	37.7	36.1	37.3
Machinery & Electrical Equipment	40.1	40.6	40.8	39.6	40.6	40.6	41.6	40.2	39.7	39.1	38.9	38.5	41.8
Nondurable Goods	43.8	42.1	44.1	42.3	41.8	41.6	41.5	42.7	44.0	44.2	46.9	48.8	46.1

Industry	Average	Portsmouth-Rochester, NH-ME, PMSA											
		Jan	Feb	Mar	Apr	May	Jun	Jul	Aug	Sep	Oct	Nov	Dec
Manufacturing	39.9	38.1	38.0	39.8	40.5	41.3	40.1	40.2	40.4	40.4	39.8	40.1	40.4
Durable Goods	40.7	39.6	39.1	41.8	42.5	42.9	39.0	39.4	39.5	40.8	40.2	41.2	41.8
Nondurable Goods	38.6	35.3	35.9	36.1	36.9	38.3	42.0	41.6	42.0	39.9	39.1	38.1	38.0

2000 (final benchmark)

Industry	Average	Manchester, NH, PMSA											
		Jan	Feb	Mar	Apr	May	Jun	Jul	Aug	Sep	Oct	Nov	Dec
Manufacturing	39.9	38.2	39.3	40.3	39.6	38.7	40.4	38.7	40.4	39.8	40.6	41.0	41.1
Durable Goods	40.8	38.0	39.5	40.7	39.7	38.9	40.7	40.1	41.1	40.7	42.6	43.4	43.6
Machinery & Electrical Equipment	39.5	37.8	38.7	38.8	38.2	37.6	38.8	38.1	39.2	39.3	42.3	42.8	42.2

Industry	Average	Nashua, NH, PMSA											
		Jan	Feb	Mar	Apr	May	Jun	Jul	Aug	Sep	Oct	Nov	Dec
Manufacturing	39.9	40.4	40.9	40.8	40.7	40.6	41.2	39.5	38.1	38.7	38.8	40.0	39.4
Durable Goods	39.6	40.5	41.4	41.0	40.8	40.8	41.3	39.1	37.0	38.3	37.7	39.2	38.7
Machinery & Electrical Equipment	39.8	35.3	39.2	39.0	41.7	41.8	42.4	40.0	39.9	39.7	39.9	39.4	39.5
Nondurable Goods	41.0	40.3	39.2	40.0	40.2	40.2	40.8	40.8	42.0	40.2	42.9	43.1	42.0

Industry	Average	Portsmouth-Rochester, NH-ME, PMSA											
		Jan	Feb	Mar	Apr	May	Jun	Jul	Aug	Sep	Oct	Nov	Dec
Manufacturing	40.3	41.8	40.5	41.1	42.2	42.4	41.5	37.3	39.7	39.9	39.6	39.4	38.4
Durable Goods	40.9	43.2	42.1	42.7	43.1	43.5	42.3	36.5	40.4	40.1	39.9	39.4	37.7
Nondurable Goods	39.3	39.1	37.7	38.1	40.6	40.6	40.2	38.6	38.4	39.5	39.0	39.5	39.7

New Hampshire Average Weekly Earnings of Nonfarm Production Workers in Manufacturing
by Place of Employment

Industry	Average	2001 (preliminary benchmark)											
		Jan	Feb	Mar	Apr	May	Jun	Jul	Aug	Sep	Oct	Nov	Dec
Manufacturing	\$565.95	\$566.09	\$550.39	\$561.84	\$559.58	\$566.78	\$565.21	\$556.99	\$567.02	\$564.98	\$556.92	\$577.30	\$593.05
Durable goods	573.40	578.93	557.88	570.35	560.59	572.83	569.57	563.29	567.00	571.58	566.91	591.85	616.77
Lumber, wood, furniture	441.22	411.86	401.45	399.64	454.91	459.00	454.26	463.27	464.13	423.65	435.09	448.94	480.57
Stone, clay, & glass products	521.25	516.75	497.66	554.09	516.90	523.81	522.32	479.71	543.98	584.16	513.91	495.01	508.74
Primary metal industries	629.34	652.54	635.38	656.48	621.09	632.27	618.34	604.26	613.85	627.21	613.27	646.02	629.40
Fabricated metal products	632.16	611.06	594.28	612.13	593.17	620.55	618.64	612.58	626.45	655.25	651.00	685.69	713.23
Industrial machinery	628.78	619.67	616.17	631.72	619.01	626.33	623.90	631.96	612.68	626.41	625.19	636.21	679.05
Electronic equipment	455.94	496.27	460.32	464.02	447.08	448.37	435.79	424.49	424.72	437.60	435.34	484.06	503.00
Instruments & related	638.86	628.04	615.38	605.81	595.73	619.20	637.46	616.85	653.49	670.03	657.64	682.55	686.80
Nondurable goods	545.55	534.21	534.67	542.13	556.51	554.58	557.05	540.79	566.75	549.65	535.05	540.91	534.77
Food & kindred products	692.35	639.48	669.76	704.99	688.16	701.62	679.33	676.27	676.27	701.60	701.60	734.16	734.16
Textile mill, apparel	400.14	361.20	342.06	355.03	380.56	384.48	414.00	411.43	441.60	437.39	423.64	424.42	425.17
Paper & allied products	654.48	657.15	664.61	649.97	718.78	660.48	664.09	680.55	702.00	635.80	609.12	595.84	617.47
Printing & publishing	636.44	621.47	641.88	660.88	678.79	670.58	671.77	603.08	649.05	606.88	591.77	630.25	616.56
Rubber & misc. plastics	489.22	504.56	491.53	496.31	495.46	520.74	508.59	479.17	507.06	503.06	476.07	451.13	437.81
Leather, leather products	269.39	269.39	269.39	269.39	269.39	269.39	269.39	269.39	269.39	269.39	269.39	269.39	269.39

Industry	Average	2000 (final benchmark)											
		Jan	Feb	Mar	Apr	May	Jun	Jul	Aug	Sep	Oct	Nov	Dec
Manufacturing	\$550.33	\$533.68	\$537.54	\$546.40	\$544.66	\$544.58	\$547.04	\$535.87	\$554.73	\$565.40	\$565.45	\$565.65	\$565.23
Durable goods	551.69	529.34	537.02	543.35	541.10	541.10	547.94	530.15	553.61	571.39	567.31	573.62	576.88
Lumber, wood, furniture	450.18	448.93	450.25	451.85	448.80	465.09	454.71	468.57	481.50	443.87	439.27	425.36	419.45
Stone, clay, & glass products	568.00	609.33	558.07	606.39	594.15	619.01	614.90	563.81	535.45	564.98	506.73	525.90	529.62
Primary metal industries	642.14	640.55	647.57	647.24	653.20	638.13	634.92	657.17	550.88	664.38	657.86	650.59	659.81
Fabricated metal products	581.28	565.19	558.73	573.52	567.95	555.83	573.24	581.92	569.04	600.24	608.88	603.12	611.80
Industrial machinery	618.62	567.62	590.65	596.71	600.82	618.85	633.74	630.55	634.51	637.28	629.88	633.28	644.36
Electronic equipment	446.13	439.79	434.43	438.65	431.38	423.12	441.15	425.49	437.47	460.08	451.44	471.54	490.99
Instruments & related	606.71	628.12	642.80	628.50	618.10	613.06	606.53	559.87	584.84	582.44	574.13	618.93	613.85
Nondurable goods	548.84	542.15	540.00	553.48	552.30	550.34	548.23	548.05	554.00	555.15	560.40	546.45	538.32
Food & kindred products	680.86	639.42	642.30	695.61	700.50	694.91	692.37	725.29	725.29	725.29	684.29	685.10	564.38
Textile mill, apparel	445.70	464.26	454.68	459.29	480.65	468.24	464.06	415.64	433.90	442.67	426.45	431.16	405.86
Paper & allied products	677.98	666.27	658.59	653.17	675.80	674.49	669.67	650.39	678.83	687.47	703.30	689.31	740.34
Printing & publishing	636.65	604.04	606.22	648.74	610.36	628.14	630.34	654.74	666.76	657.57	671.08	622.33	635.54
Rubber & misc. plastics	487.56	506.69	500.99	502.18	495.40	485.11	483.80	475.51	472.23	469.62	497.20	483.99	476.91

2001 (preliminary benchmark) Average Weekly Earnings of Nonfarm Production Workers in Manufacturing by Place of Employment

Industry	Average	Manchester, NH, PMSA											
		Jan	Feb	Mar	Apr	May	Jun	Jul	Aug	Sep	Oct	Nov	Dec
Manufacturing	\$628.00	\$624.24	\$612.40	\$631.05	\$627.27	\$633.04	\$626.43	\$631.98	\$658.61	\$615.44	\$603.67	\$611.51	\$649.93
Durable Goods	675.62	667.36	669.24	676.49	674.24	680.16	677.73	682.37	718.25	652.39	648.25	649.89	708.95
Machinery & Electrical Equipment	568.02	587.97	571.78	540.54	566.58	545.24	544.90	520.52	575.87	575.87	545.38	562.06	675.38

Industry	Average	Nashua, NH, PMSA											
		Jan	Feb	Mar	Apr	May	Jun	Jul	Aug	Sep	Oct	Nov	Dec
Manufacturing	\$548.45	\$543.72	\$534.76	\$549.85	\$543.04	\$548.73	\$551.60	\$546.27	\$550.42	\$563.00	\$557.57	\$547.61	\$544.05
Durable Goods	504.03	516.65	492.15	514.95	507.11	514.56	519.28	501.27	501.73	519.09	498.02	477.60	485.27
Machinery & Electrical Equipment	595.49	646.76	627.91	613.01	587.89	587.89	611.94	591.34	583.99	575.16	572.22	566.34	614.88
Nondurable Goods	724.89	648.34	703.84	688.64	685.52	688.90	684.75	737.43	751.08	732.84	788.39	818.86	786.01

Industry	Average	Portsmouth-Rochester, NH-ME, PMSA											
		Jan	Feb	Mar	Apr	May	Jun	Jul	Aug	Sep	Oct	Nov	Dec
Manufacturing	\$542.24	\$503.68	\$501.22	\$528.54	\$549.99	\$569.53	\$540.55	\$540.69	\$555.10	\$556.31	\$546.06	\$556.59	\$561.96
Durable Goods	586.89	551.23	543.49	585.20	613.70	630.63	562.77	571.69	582.23	600.58	581.69	601.52	612.37
Nondurable Goods	462.43	414.42	417.88	422.73	432.84	458.07	500.22	484.64	506.52	480.00	482.49	475.49	474.24

2000 (final benchmark)

Industry	Average	Manchester, NH, PMSA											
		Jan	Feb	Mar	Apr	May	Jun	Jul	Aug	Sep	Oct	Nov	Dec
Manufacturing	\$591.72	\$546.64	\$565.53	\$587.98	\$577.76	\$570.83	\$593.07	\$565.79	\$588.63	\$600.98	\$628.08	\$623.20	\$638.69
Durable Goods	605.88	541.88	568.01	584.45	578.43	566.38	599.92	590.67	598.42	620.27	663.71	665.32	681.90
Machinery & Electrical Equipment	532.07	489.89	503.49	498.97	486.67	470.75	517.20	493.01	515.09	561.60	615.89	610.33	617.81

Industry	Average	Nashua, NH, PMSA											
		Jan	Feb	Mar	Apr	May	Jun	Jul	Aug	Sep	Oct	Nov	Dec
Manufacturing	\$547.83	\$551.06	\$560.33	\$558.55	\$560.85	\$559.47	\$561.56	\$545.89	\$522.73	\$536.77	\$539.32	\$548.80	\$530.72
Durable Goods	521.93	535.41	547.31	535.87	537.34	537.74	537.31	516.51	483.59	507.86	500.66	520.97	510.45
Machinery & Electrical Equipment	650.73	579.63	627.20	625.56	674.29	670.05	656.78	658.00	681.49	678.87	679.10	657.98	629.24
Nondurable Goods	639.19	606.52	602.50	630.80	638.78	635.16	643.01	651.58	664.86	643.60	685.11	657.28	608.16

Industry	Average	Portsmouth-Rochester, NH-ME, PMSA											
		Jan	Feb	Mar	Apr	May	Jun	Jul	Aug	Sep	Oct	Nov	Dec
Manufacturing	\$539.21	\$553.01	\$537.44	\$546.22	\$563.37	\$574.52	\$566.89	\$502.06	\$535.55	\$534.26	\$530.24	\$516.53	\$513.79
Durable Goods	579.14	608.26	595.72	600.36	609.00	624.66	607.43	520.86	578.53	572.63	564.59	539.39	531.57
Nondurable Goods	466.49	448.48	432.42	444.25	480.70	487.61	495.67	464.36	456.58	462.15	464.10	472.82	479.97

**New Hampshire Average Hourly Earnings of Nonfarm Production Workers in Manufacturing
by Place of Employment**

Industry	Average	2001 (preliminary benchmark)											
		Jan	Feb	Mar	Apr	May	Jun	Jul	Aug	Sep	Oct	Nov	Dec
Manufacturing	\$13.77	\$13.74	\$13.49	\$13.67	\$13.92	\$13.96	\$14.06	\$13.89	\$14.07	\$13.78	\$13.65	\$13.52	\$13.54
Durable goods	13.62	13.59	13.22	13.42	13.74	13.87	13.96	13.84	14.00	13.74	13.53	13.30	13.35
Lumber, wood, furniture	11.17	10.48	10.32	10.30	11.43	11.25	11.30	11.64	11.84	11.45	11.48	11.28	11.15
Stone, clay, & glass products	12.47	13.25	12.96	13.13	13.22	13.03	13.19	12.46	11.80	12.17	11.76	11.73	11.51
Primary metal industries	15.02	14.73	14.64	14.46	14.93	15.09	15.42	14.92	15.27	15.15	15.18	15.68	14.95
Fabricated metal products	14.77	14.48	14.32	14.54	14.61	14.74	14.80	14.62	14.88	14.96	15.00	15.07	15.24
Industrial machinery	14.76	14.18	14.10	14.26	14.88	15.02	15.18	14.94	14.98	14.95	14.85	14.83	14.99
Electronic equipment	10.96	11.76	10.96	11.29	11.29	11.38	11.29	11.23	11.51	10.94	10.39	9.96	10.04
Instruments & related	15.62	15.17	15.27	15.07	15.12	15.48	15.51	15.46	15.90	15.84	16.04	16.29	16.16
Nondurable goods	14.17	14.17	14.22	14.38	14.38	14.22	14.32	14.01	14.24	13.88	13.97	14.16	14.11
Food & kindred products	18.03	17.52	18.40	18.85	18.70	18.66	18.41	17.52	17.52	17.54	17.54	17.95	17.95
Textile mill, apparel	11.24	11.54	11.07	11.06	11.16	10.80	11.25	11.06	11.53	11.42	11.09	11.44	11.46
Paper & allied products	15.62	16.47	16.21	16.29	16.08	15.36	15.48	14.99	15.00	14.89	15.04	15.68	16.08
Printing & publishing	17.63	16.98	17.49	17.91	17.91	17.93	18.01	18.22	18.13	17.29	17.56	17.22	16.80
Rubber & misc. plastics	12.48	12.52	12.35	12.47	12.48	12.67	12.62	11.89	12.52	12.33	12.43	12.78	12.69
Leather, leather products	7.90	7.90	7.90	7.90	7.90	7.90	7.90	7.90	7.90	7.90	7.90	7.90	7.90

Industry	Average	2000 (final benchmark)											
		Jan	Feb	Mar	Apr	May	Jun	Jul	Aug	Sep	Oct	Nov	Dec
Manufacturing	\$13.39	\$13.21	\$13.24	\$13.23	\$13.22	\$13.25	\$13.31	\$13.33	\$13.53	\$13.69	\$13.56	\$13.50	\$13.62
Durable goods	13.23	13.07	13.13	13.03	13.07	13.07	13.14	13.09	13.34	13.54	13.38	13.34	13.51
Lumber, wood, furniture	10.98	10.87	11.09	11.24	11.00	11.10	11.01	11.13	11.12	11.44	10.90	10.40	10.46
Stone, clay, & glass products	13.82	13.88	13.48	13.94	13.98	14.23	14.30	14.06	13.59	13.95	13.30	13.45	13.58
Primary metal industries	14.43	14.33	14.17	13.83	14.20	14.34	14.30	14.38	14.69	14.83	14.85	14.62	14.63
Fabricated metal products	13.84	13.33	13.24	13.40	13.62	13.59	13.88	14.09	14.12	14.19	14.16	14.36	14.00
Industrial machinery	14.59	14.48	14.62	14.77	14.69	14.63	14.67	14.63	14.62	14.65	14.48	14.36	14.48
Electronic equipment	10.75	10.94	10.78	10.37	10.32	10.32	10.63	10.48	10.67	11.14	10.80	10.89	11.58
Instruments & related	15.13	15.32	15.64	15.00	14.93	14.88	14.58	15.01	15.35	15.05	15.31	15.32	15.27
Nondurable goods	13.79	13.52	13.50	13.70	13.57	13.69	13.74	13.91	13.99	14.09	14.01	13.94	13.91
Food & kindred products	17.15	16.48	16.64	17.70	17.87	17.91	17.44	17.69	17.69	17.69	17.15	16.39	15.05
Textile mill, apparel	11.76	12.09	11.54	11.54	11.61	11.59	12.18	11.61	12.12	11.68	11.62	12.01	11.53
Paper & allied products	15.55	15.04	15.14	15.05	15.50	15.47	15.61	15.71	15.75	16.10	15.84	15.56	15.99
Printing & publishing	16.71	15.98	16.08	16.72	16.19	16.53	16.08	16.66	16.88	17.35	17.66	17.05	17.27
Rubber & misc. plastics	11.95	12.18	12.16	12.13	11.88	11.89	11.80	11.77	11.66	11.77	11.81	12.13	12.26
Leather, leather products	7.77	7.55	7.66	7.65	7.67	7.62	7.90	7.90	7.90	7.90	7.90	7.90	7.90

**2001 (preliminary benchmark) Average Hourly Earnings of Nonfarm Production Workers in Manufacturing
by Place of Employment**

Industry	Average	Manchester, NH, PMSA											
		Jan	Feb	Mar	Apr	May	Jun	Jul	Aug	Sep	Oct	Nov	Dec
Manufacturing	\$15.70	\$15.30	\$15.31	\$15.62	\$15.45	\$15.44	\$15.70	\$15.76	\$15.87	\$15.70	\$15.97	\$16.05	\$16.33
Durable Goods	16.01	15.52	15.60	15.88	15.68	15.60	16.06	16.17	16.25	15.99	16.37	16.37	16.76
Machinery & Electrical Equipment	14.06	14.10	13.98	13.65	13.49	12.68	13.76	13.52	14.08	14.08	14.74	14.83	15.78

Industry	Average	Nashua, NH, PMSA											
		Jan	Feb	Mar	Apr	May	Jun	Jul	Aug	Sep	Oct	Nov	Dec
Manufacturing	\$13.92	\$13.80	\$13.47	\$13.85	\$13.96	\$14.07	\$13.79	\$13.90	\$13.97	\$14.04	\$14.08	\$14.15	\$13.95
Durable Goods	13.16	13.35	12.75	13.17	13.31	13.40	13.08	13.02	13.10	13.31	13.21	13.23	13.01
Machinery & Electrical Equipment	14.85	15.93	15.39	15.48	14.48	14.48	14.71	14.71	14.71	14.71	14.71	14.71	14.71
Nondurable Goods	16.55	15.40	15.96	16.28	16.40	16.56	16.50	17.27	17.07	16.58	16.81	16.78	17.05

Industry	Average	Portsmouth-Rochester, NH-ME, PMSA											
		Jan	Feb	Mar	Apr	May	Jun	Jul	Aug	Sep	Oct	Nov	Dec
Manufacturing	\$13.59	\$13.22	\$13.19	\$13.28	\$13.58	\$13.79	\$13.48	\$13.45	\$13.74	\$13.77	\$13.72	\$13.88	\$13.91
Durable Goods	14.42	13.92	13.90	14.00	14.44	14.70	14.43	14.51	14.74	14.72	14.47	14.60	14.65
Nondurable Goods	11.98	11.74	11.64	11.71	11.73	11.96	11.91	11.65	12.06	12.03	12.34	12.48	12.48

2000 (final benchmark)

Industry	Average	Manchester, NH, PMSA											
		Jan	Feb	Mar	Apr	May	Jun	Jul	Aug	Sep	Oct	Nov	Dec
Manufacturing	\$14.83	\$14.31	\$14.39	\$14.59	\$14.59	\$14.75	\$14.68	\$14.62	\$14.57	\$15.10	\$15.47	\$15.20	\$15.54
Durable Goods	14.85	14.26	14.38	14.36	14.57	14.56	14.74	14.73	14.56	15.24	15.58	15.33	15.64
Machinery & Electrical Equipment	13.47	12.96	13.01	12.86	12.74	12.52	13.33	12.94	13.14	14.29	14.56	14.26	14.64

Industry	Average	Nashua, NH, PMSA											
		Jan	Feb	Mar	Apr	May	Jun	Jul	Aug	Sep	Oct	Nov	Dec
Manufacturing	\$13.73	\$13.64	\$13.70	\$13.69	\$13.78	\$13.78	\$13.63	\$13.82	\$13.72	\$13.87	\$13.90	\$13.72	\$13.47
Durable Goods	13.18	13.22	13.22	13.07	13.17	13.18	13.01	13.21	13.07	13.26	13.28	13.29	13.19
Machinery & Electrical Equipment	16.35	16.42	16.00	16.04	16.17	16.03	15.49	16.45	17.08	17.10	17.02	16.70	15.93
Nondurable Goods	15.59	15.05	15.37	15.77	15.89	15.80	15.76	15.97	15.83	16.01	15.97	15.25	14.48

Industry	Average	Portsmouth-Rochester, NH-ME, PMSA											
		Jan	Feb	Mar	Apr	May	Jun	Jul	Aug	Sep	Oct	Nov	Dec
Manufacturing	\$13.38	\$13.23	\$13.27	\$13.29	\$13.35	\$13.55	\$13.66	\$13.46	\$13.49	\$13.39	\$13.39	\$13.11	\$13.38
Durable Goods	14.16	14.08	14.15	14.06	14.13	14.36	14.36	14.27	14.32	14.28	14.15	13.69	14.10
Nondurable Goods	11.87	11.47	11.47	11.66	11.84	12.01	12.33	12.03	11.89	11.70	11.90	11.97	12.09

Continued from page 3

132,600. Again the benchmark validated the revised monthly data, off by only 200. Eating and drinking places led the way with 800 more jobs.

Finance, Insurance, and Real Estate

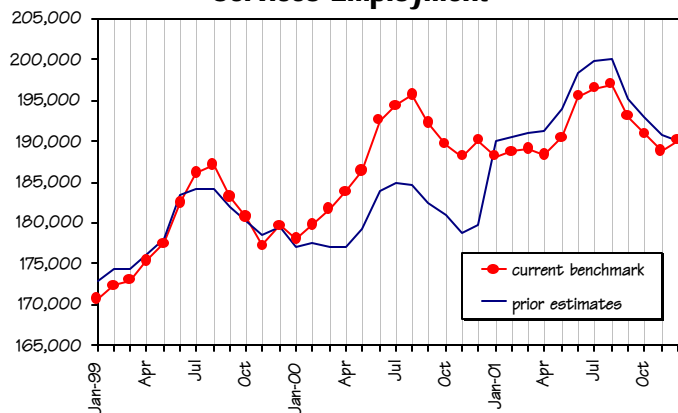
The final benchmark for 2000 showed employment at 32,700, unchanged from the preliminary benchmark. This was up only 100 jobs from 1999.

After virtually no growth in 2000, employment jumped by 1,000 jobs with the 2001 preliminary benchmark. This brought employment to 33,700, 900 above the original 12-month average estimate. Every month was benchmarked upward, maxing at 1,300 in July.

Services

Services added 8,900 jobs in 2000, pushing its total to 187,600. The final benchmark, like the one for Retail trade, was incredibly accurate, down an insignificant 100 jobs from the preliminary. Business services led the way with a 4,100 job gain.

Services Employment

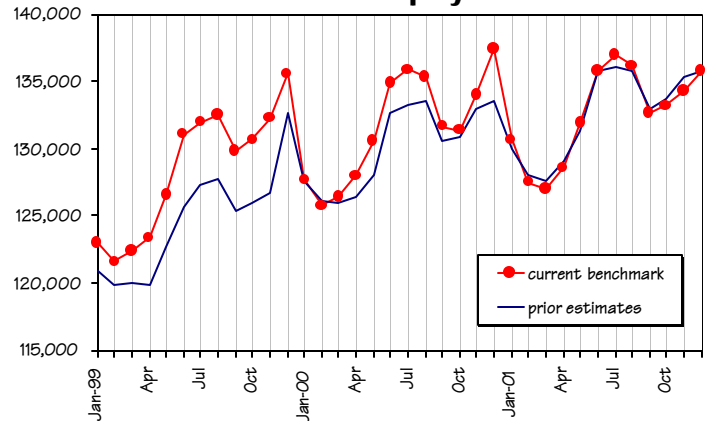


About CES

In order to gauge the state's economy in a timely manner, CES estimates employment each month from a sample of New Hampshire employers. Because it is based on a sample, the data is necessarily incomplete. At the end of each calendar year, CES employment estimates are revised, or benchmarked. The benchmark integrates the latest *covered* employment numbers from payroll reports submitted quarterly to New Hampshire Employment Security by New Hampshire employers subject to unemployment compensation law. The benchmark process allows an opportunity to adjust sample-based estimates to actual counts of jobs with New Hampshire employers. The resulting product offers a more accurate picture of the New Hampshire economy than could be achieved with sample-based estimates alone.

If you have any questions concerning this report, please contact Bernhard McKay, Labor Market Analyst, at 603-228-4127.

Retail Trade Employment



Health services, the largest major group, grew by only 700 jobs.

The 2001 preliminary benchmark, at 191,300, added another 3,700 jobs. This was considerably below the original estimate of 193,800. Health services led the division with an increase of 2,100 jobs. Business services ended a decade of over-the-year gains with a 1,200 job decrease. This was only the second decrease in Business services since 1972, the other being in 1991.

Government

The final benchmark revised the preliminary 2000 numbers in Government employment upward 500 to 83,500, an over-the-year gain of 2,000. Almost all the employment gain was in Local government, where employment increased 1,400 to 53,800.

Growth in Government employment continued upward to 84,100, up 700 in 2001. Again, Local government was responsible for most of the growth with 400 added jobs in 2001.

Martin Capodice

New Hampshire Seasonally Adjusted Nonfarm Employment by Industry

2001 Preliminary Benchmark

	<i>Total Non-Farm</i>	<i>Construction</i>	<i>Manufacturing</i>	<i>Durable Goods</i>	<i>Nondurable Goods</i>	<i>Transportation & Public Utilities</i>	<i>Trade</i>	<i>Wholesale Trade</i>	<i>Retail Trade</i>	<i>Finance, Insurance & Real Estate</i>	<i>Services</i>	<i>Total Government</i>
Ann. Avg.	627,200	26,800	103,900	75,700	28,200	21,600	165,000	32,500	132,500	33,700	191,600	84,000
Jan	633,100	26,100	107,600	78,600	29,000	21,800	165,800	32,400	133,400	33,300	193,500	84,600
Feb	632,000	25,900	107,700	78,700	29,000	21,900	165,000	32,500	132,500	33,500	193,400	84,200
Mar	630,200	26,000	106,800	78,000	28,800	21,900	164,200	32,300	131,900	33,700	192,700	84,500
Apr	628,100	26,200	105,600	77,000	28,600	21,800	164,700	32,300	132,400	33,800	191,300	84,300
May	628,200	26,700	104,400	76,100	28,300	22,000	165,400	32,600	132,800	33,800	190,600	84,800
Jun	626,600	26,800	103,000	74,900	28,100	21,900	165,400	32,700	132,700	33,800	190,400	84,800
Jul	625,600	27,200	103,400	75,300	28,100	21,300	165,400	32,500	132,900	33,900	191,400	82,500
Aug	624,900	27,000	102,700	74,900	27,800	21,200	165,000	32,400	132,600	33,900	191,800	82,800
Sep	624,900	27,200	101,800	74,100	27,700	21,300	165,200	32,600	132,600	33,800	191,600	83,500
Oct	623,300	27,300	101,600	74,000	27,600	21,200	164,700	32,500	132,200	33,800	190,200	84,000
Nov	624,300	27,800	101,400	73,800	27,600	21,300	164,600	32,700	131,900	33,800	191,000	83,900
Dec	624,600	27,800	100,900	73,400	27,500	21,100	164,800	32,800	132,000	33,700	191,600	84,200

2000 Final Benchmark

	<i>Total Non-Farm</i>	<i>Construction</i>	<i>Manufacturing</i>	<i>Durable Goods</i>	<i>Nondurable Goods</i>	<i>Transportation & Public Utilities</i>	<i>Trade</i>	<i>Wholesale Trade</i>	<i>Retail Trade</i>	<i>Finance, Insurance & Real Estate</i>	<i>Services</i>	<i>Total Government</i>
Ann. Avg.	622,200	25,000	106,800	76,900	29,900	21,900	164,200	32,600	131,600	32,700	187,600	83,500
Jan	613,900	24,500	105,900	75,600	30,300	22,100	162,400	31,900	130,500	32,700	183,100	82,800
Feb	615,400	24,700	106,000	76,000	30,000	22,000	162,800	31,900	130,900	32,600	183,800	83,200
Mar	617,800	25,000	105,900	76,000	29,900	21,600	163,300	32,100	131,200	32,500	185,300	83,800
Apr	620,600	24,900	106,400	76,200	30,200	22,100	163,900	32,000	131,900	32,600	186,700	83,500
May	621,600	24,700	106,000	75,800	30,200	22,100	164,400	32,900	131,500	32,600	186,500	84,800
Jun	622,300	24,900	106,200	76,200	30,000	22,200	164,600	32,800	131,800	32,600	187,600	83,700
Jul	623,900	25,000	108,200	77,800	30,400	22,000	164,900	32,800	132,100	32,700	187,700	82,900
Aug	622,000	25,200	107,200	77,400	29,800	20,800	164,700	32,800	131,900	32,700	188,200	82,800
Sep	625,300	25,100	107,300	77,500	29,800	22,100	164,400	32,900	131,500	32,700	189,100	84,200
Oct	625,400	25,200	107,300	77,800	29,500	22,200	164,100	33,000	131,100	32,900	189,900	83,400
Nov	628,400	25,400	107,600	78,200	29,400	22,100	164,800	33,000	131,800	33,000	191,500	83,600
Dec	629,400	25,500	107,500	78,200	29,300	22,000	165,500	33,100	132,400	33,100	192,200	83,200

Benchmarked Local Area Unemployment Statistics

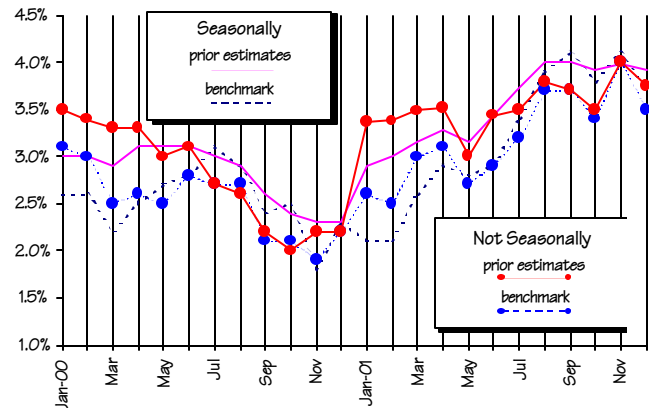
New Hampshire's average unemployment rate for 2001 was benchmarked at 3.5 percent, tied with Delaware and Virginia for the sixth lowest rate in the U.S. This was up from the 2000 rate of 2.8 percent, which ranked seventh lowest in the nation. For the year, employment averaged 664,290 and unemployment was 24,360. Total labor force was 688,650. Compared to 2000, employment was down 2,030; unemployment was up 5,170; and total labor force was up 3,140. The benchmarked unemployment rate was 0.2 percentage points above the 12-month average of the revised rates.

With the benchmark came a smaller number of employed people. The decrease was spread evenly throughout the year. It ranged from 10,550 in January to 16,180 in May. The drop in employment caused the annual average, at 664,290, to fall behind that of 2000 by 2,030. This was the first decrease in employment since 1996.

While employment numbers fell, the number unemployed rose in the benchmark. The annual average increase was 1,960. Much of the change was in the first seven months of the year with the number unemployed increasing between 1,430 in May and 5,620 in February.

The cumulative labor force shifted downward 12,280 to 688,650. This was only 3,140 above 2000. This follows two years where over-the-year labor force increases exceeded 15,000. The benchmarked

**New Hampshire Unemployment Rate - 2001
Benchmarked Figures and Prior Estimates**



unemployment rate (unemployed divided by civilian labor force) reflected these changes. Rates in two months were unchanged with the benchmark. The remaining ten months, however, rose, especially in the first two months. January and February both increased to 3.4 percent, up from 2.6 percent and 2.5 percent respectively.

Seasonally adjusted LAUS benchmarking resulted in a similar pattern to the unadjusted labor force data. Employment decreased by 14,290 to 664,920; unemployment increased by 1,990 to 24,360; pushing the labor force difference to a negative 12,290. The greatest differences in labor force were in April at 14,480 and September at 15,280. Differences in the unemployment rate, however, were most notable at the beginning of the year.

Martin Capodice

About LAUS

The *Local Area Unemployment Statistics (LAUS)* program produces monthly estimates of the number of employed residents and the number of unemployed residents in the state's labor force. The sum of these is the civilian labor force. The unemployment rate is calculated by dividing the number unemployed by the total labor force.

Two regression models specific to New Hampshire are used. They extract data from three major sources: the *Current Population Survey (CPS)*, the *Current Employment Statistics* program (*CES*), and *Unemployment Insurance (UI)* data.

CPS -The primary input is data from the monthly survey of New Hampshire households conducted by the U.S. Census Bureau. The LAUS process measures all the unemployed, even those who do not collect unemployment compensation benefits.

CES -These estimates gauge total employment levels of nonagricultural jobs in New Hampshire.

UI -Additional inputs come from the number of continued claimants of Unemployment Insurance who had no earnings in a specific week.

New Hampshire LAUS benchmarking for 2001 is complete, but will not be official until the data, along with that of the other states, is reviewed by the Bureau of Labor Statistics in Washington, D.C. This review process ensures comparability of estimates between states.

2001 Local Area Unemployment Statistics Report

Prepared by N.H. Employment Security, Economic and Labor Market Information Bureau, 32 South Main Street, Concord, New Hampshire 03301
 These Benchmark Estimates are awaiting final review by Bureau of Labor Statistics, Washington, D.C.

Version — February 28, 2002

Area	Jan	Feb	Mar	Apr	May	Jun	Jul	Aug	Sep	Oct	Nov	Dec	Annual Average
New Hampshire													
Labor Force	685,090	684,620	685,530	684,700	683,900	695,930	702,100	697,950	680,730	684,860	691,280	687,190	688,650
Employment	662,010	661,510	661,630	660,650	663,370	671,970	677,530	671,460	655,480	660,930	663,590	661,370	664,290
Unemployment	23,080	23,110	23,900	24,050	20,530	23,960	24,570	26,490	25,250	23,930	27,690	25,820	24,360
Rate	3.4%	3.4%	3.5%	3.5%	3.0%	3.4%	3.5%	3.8%	3.7%	3.5%	4.0%	3.8%	3.5%
Belknap County													
Labor Force	28,900	29,070	29,030	28,830	28,840	29,370	29,700	29,480	28,670	28,840	28,940	29,030	29,060
Employment	27,920	28,040	28,020	27,930	28,120	28,580	28,900	28,560	27,850	28,110	28,050	28,090	28,180
Unemployment	980	1,030	1,010	900	720	790	800	920	820	730	890	940	880
Rate	3.4%	3.5%	3.5%	3.1%	2.5%	2.7%	2.7%	3.1%	2.9%	2.5%	3.1%	3.2%	3.0%
Carroll County													
Labor Force	21,720	21,590	21,590	21,610	21,450	21,790	22,220	21,840	21,420	21,390	21,490	21,480	21,630
Employment	20,960	20,830	20,790	20,750	20,860	21,220	21,500	21,230	20,710	20,900	20,830	20,850	20,950
Unemployment	760	760	800	860	590	570	720	610	710	490	660	630	680
Rate	3.5%	3.5%	3.7%	4.0%	2.8%	2.6%	3.2%	2.8%	3.3%	2.3%	3.1%	2.9%	3.1%
Cheshire County													
Labor Force	38,870	39,130	39,010	38,070	37,230	37,910	38,430	37,950	37,220	37,730	37,710	36,360	37,960
Employment	37,400	37,660	37,590	36,790	36,340	36,870	37,240	36,720	36,060	36,640	36,570	35,300	36,760
Unemployment	1,470	1,470	1,420	1,280	890	1,040	1,190	1,230	1,160	1,090	1,140	1,060	1,200
Rate	3.8%	3.8%	3.6%	3.4%	2.4%	2.7%	3.1%	3.2%	3.1%	2.9%	3.0%	2.9%	3.2%
Coos County													
Labor Force	16,430	16,270	16,260	16,720	16,460	16,510	16,530	16,530	16,630	16,860	16,970	16,900	16,590
Employment	15,690	15,520	15,550	15,510	15,610	15,880	16,080	15,910	15,510	15,650	15,620	15,640	15,680
Unemployment	740	750	710	1,210	850	630	450	620	1,120	1,210	1,350	1,260	910
Rate	4.5%	4.6%	4.4%	7.2%	5.2%	3.8%	2.7%	3.8%	6.7%	7.2%	8.0%	7.5%	5.5%
Grafton County													
Labor Force	43,190	43,460	43,420	43,410	43,550	44,350	44,890	44,460	43,390	43,790	43,740	43,880	43,790
Employment	42,140	42,450	42,350	42,230	42,560	43,420	43,970	43,640	42,680	43,150	42,900	42,850	42,860
Unemployment	1,050	1,010	1,070	1,180	990	930	920	820	710	640	840	1,030	930
Rate	2.4%	2.3%	2.5%	2.7%	2.3%	2.1%	2.0%	1.8%	1.6%	1.5%	1.9%	2.3%	2.1%
Hillsborough County													
Labor Force	212,080	211,220	212,010	211,570	210,680	214,650	216,270	215,750	209,380	211,160	213,960	213,130	212,660
Employment	205,400	204,560	205,090	204,450	204,120	206,330	207,600	206,360	200,660	202,320	204,010	204,040	204,580
Unemployment	6,680	6,660	6,920	7,120	6,560	8,320	8,670	9,390	8,720	8,840	9,950	9,090	8,080
Rate	3.1%	3.2%	3.3%	3.4%	3.1%	3.9%	4.0%	4.4%	4.2%	4.2%	4.7%	4.3%	3.8%
Merrimack County													
Labor Force	76,640	76,910	76,910	76,440	76,680	78,050	78,910	78,420	76,000	76,540	76,720	76,670	77,070
Employment	74,420	74,550	74,680	74,420	74,920	76,060	76,850	76,000	74,060	74,780	74,680	74,820	75,020
Unemployment	2,220	2,360	2,230	2,020	1,760	1,990	2,060	2,420	1,940	1,760	2,040	1,850	2,050
Rate	2.9%	3.1%	2.9%	2.6%	2.3%	2.5%	2.6%	3.1%	2.6%	2.3%	2.7%	2.4%	2.7%
Rockingham County													
Labor Force	167,490	167,190	167,660	167,910	168,430	171,610	172,380	171,670	167,960	168,090	170,470	169,120	169,170
Employment	161,020	160,670	160,600	161,060	162,380	164,240	164,910	163,380	160,010	160,860	161,900	161,280	161,860
Unemployment	6,470	6,520	7,060	6,850	6,050	7,370	7,470	8,290	7,950	7,230	8,570	7,840	7,310
Rate	3.9%	3.9%	4.2%	4.1%	3.6%	4.3%	4.3%	4.8%	4.7%	4.3%	5.0%	4.6%	4.3%
Strafford County													
Labor Force	59,160	59,230	59,090	59,700	60,080	60,810	61,650	60,960	59,660	59,930	60,720	60,170	60,100
Employment	57,070	57,220	56,940	57,570	58,390	58,940	59,770	59,180	57,930	58,320	58,880	58,410	58,220
Unemployment	2,090	2,010	2,150	2,130	1,690	1,870	1,880	1,780	1,730	1,610	1,840	1,760	1,880
Rate	3.5%	3.4%	3.6%	3.6%	2.8%	3.1%	3.0%	2.9%	2.9%	2.7%	3.0%	2.9%	3.1%
Sullivan County													
Labor Force	20,630	20,570	20,550	20,480	20,520	20,880	21,130	20,910	20,410	20,550	20,550	20,480	20,640
Employment	20,000	20,020	20,030	19,960	20,080	20,440	20,700	20,490	20,010	20,210	20,140	20,110	20,180
Unemployment	630	550	520	520	440	440	430	420	400	340	410	370	460
Rate	3.1%	2.7%	2.5%	2.5%	2.1%	2.1%	2.0%	2.0%	2.0%	1.7%	2.0%	1.8%	2.2%