

# New Hampshire Economic Conditions

July 2016

## Personal Consumption Expenditures in New Hampshire 2014

In 2014, the *personal consumption expenditures* (PCE) of New Hampshire households totaled \$61,874 million, up 4.2 percent from \$59,373 million in 2013. Personal consumption expenditures for each state are a measure of the goods and services purchased by or on behalf of households by state of residence.<sup>1</sup>

Personal consumption expenditures are categorized as *Goods or Services*. *Goods* are tangible products that can be stored or inventoried. *Services* are products that cannot be stored or inventoried and are usually consumed at the place and time of purchase. New Hampshire households expended almost \$2.00 on services for every \$1.00 expended on goods.

### Personal Consumption Expenditures on Services

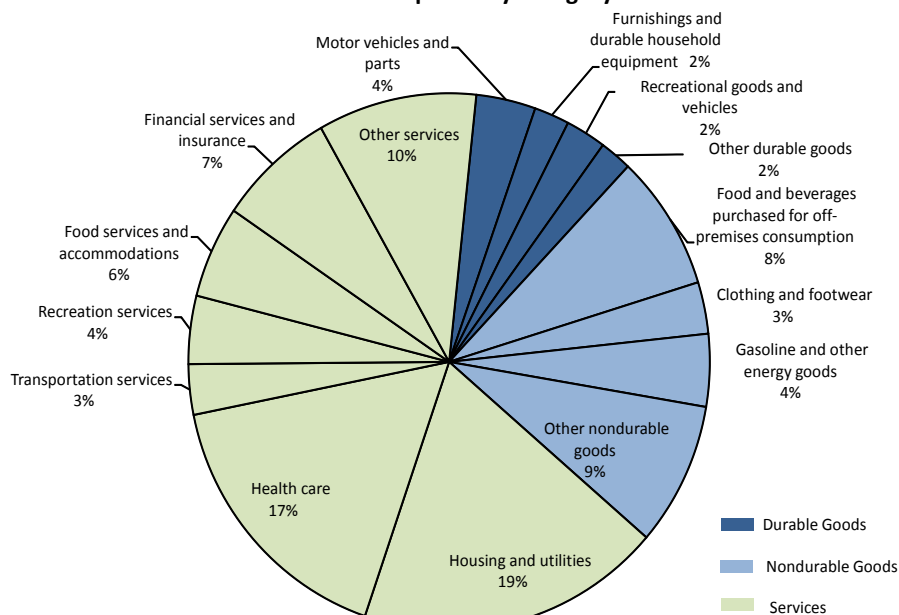
*Services* accounted for 67.0 percent of total personal consumption expenditures by New Hampshire households in 2014. Among services categories, 18.0 percent of total personal expenditures were for *Housing and utilities*, accounting for the largest share, and 15.8 percent were for *Health care*, the second-largest share. These two categories represented more than half of personal consumption expenditures in services. Out of total personal expenditures, 9.4 percent were for *Other services*, including communication, education services, and other personal services, 7.0 percent were for *Financial services and*

*insurance*, and 5.3 percent were for *Food services and accommodations*, which consists of expenditures on purchased meals and beverages and food furnished to employees (including military).

### Personal Consumption Expenditures on Goods

In 2014, 33.0 percent of personal consumption expenditures by New Hampshire households were for *Goods*, which are categorized into two groups: durable goods and nondurable goods. *Durable goods* are defined as products that have an average life of at least three years, while *Nondurable goods* are products that have an average life of less than three years.

Details of Total Personal Consumption Expenditures  
in New Hampshire by Category



Source: US Department of Commerce, Bureau of Economic Analysis

## Inside this issue

### Seasonally Adjusted Estimates

Unemployment Rates. . . . . 4  
Current Employment Statistics. . . . . 4

### Not Seasonally Adjusted Estimates

Unemployment Rates. . . . . 5  
Current Employment Statistics. . . . . 5

Claims Activity . . . . . 9

<sup>1</sup> U.S. Department of Commerce, Bureau of Economic Analysis, News Release BEA-15-58, Personal Consumption Expenditures by State, 1997 – 2014. <http://www.bea.gov/regional/definitions/> Personal Consumption Expenditures are measured in current dollars.

Over 23 percent of expenditures for New Hampshire households were on nondurable goods. Among nondurable goods categories, 8.2 percent of total expenditures were for *Other nondurable goods*, including medical products, tobacco, pharmaceutical products, household supplies and magazines and newspapers, closely followed by 7.8 percent for *Off-premise food and beverages products*. Of total personal expenditures, 4.2 percent was spent on *Gasoline and other energy goods*, and 3.0 percent was on *Clothing and footwear*.

Durable goods accounted for 9.9 percent of total personal expenditures by New Hampshire households. Among durable goods categories, 3.5 percent of total expenditures were on *Motor vehicles and parts*. Out of total personal

consumption expenditures, 2.4 percent was for *Recreational goods and vehicles*, 2.1 percent was for *Furnishings and durable household equipment*, and 1.9 percent was for *Other durable goods*, which includes purchases of jewelry, therapeutic equipment, educational books, luggage and similar personal items, and telephones and facsimile equipment.

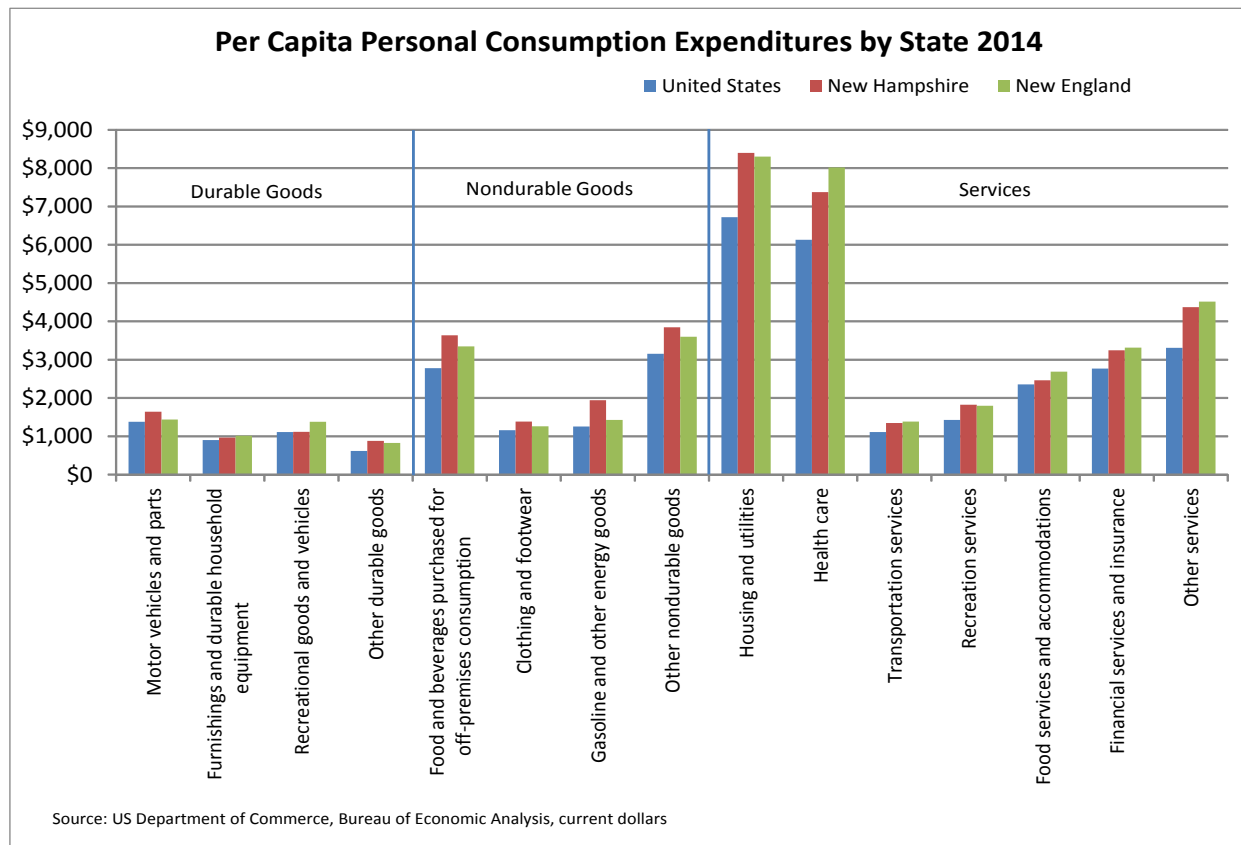
### Per Capita Personal Consumption Expenditures

Like personal income measures, total personal consumption expenditures for New Hampshire are difficult to compare to other states because of the differences in population. Per capita measures are used to gain better insight into expenditure patterns between states by eliminating population bias.

In 2014, New Hampshire per capita personal consumption expenditures averaged \$46,633. New Hampshire residents surpassed per capita expenditures of New England as a whole, which had per capita expenditures of \$46,008, as well as the nation, which had per capita expenditures of \$37,196.

### New Hampshire vs. United States

Per capita personal consumption expenditures for New Hampshire were more than \$9,400 above the national average, and were also higher in all consumption categories. The biggest difference was in *Housing and utilities* - New Hampshire per capita expenditures were \$1,677 more than the national average. New Hampshire per capita expenditures on *Health care* were \$1,247 above the national average, and \$1,064 higher on *Other services*.



**New Hampshire vs. New England**

Comparing per capita expenditures for New Hampshire to those of New England as a whole may be more valuable because of regional similarities. Per capita personal consumption expenditures for New Hampshire were \$625 higher than per capita expenditures for New England. Expenditures in all categories were more comparable between the state and the region than between the state and the nation.

Among durable goods categories, per capita expenditures for New Hampshire were nearly the same as New England, on *Furnishings and durable household equipment* and *Other durable goods*. New Hampshire per capita expenditures on *Motor vehicles and parts* were \$204 higher than New England as a whole, while expenditures on *Recreational goods and vehicles* were \$265 higher for

New England than New Hampshire. Overall, the differences in per capita expenditures for durable goods were \$56 lower for New Hampshire than New England as a whole.

Per capita expenditures by New Hampshire residents on all nondurable goods were \$10,802, which was higher than the \$9,632 per capita expenditures for New England residents. The biggest difference between New Hampshire and New England as a whole was on *Gasoline and other energy goods*, with per capita expenditures for New Hampshire \$514 more than New England overall. Per capita expenditures were higher in New Hampshire than New England as a whole for *Food and beverages purchased for off-premises consumption*, (\$289 higher); *Other nondurable goods*, including medical products, tobacco, pharmaceutical products, household supplies and

magazines and newspapers (\$246 higher); and *Clothing and footwear* (\$121 higher).

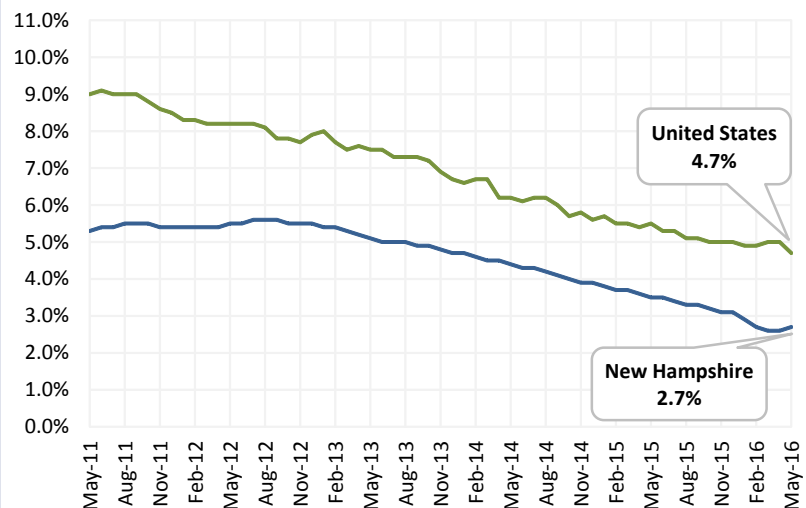
Comparing per capita expenditures on Services between New Hampshire and New England, *Transportation services* and *Recreation services* were nearly the same. New Hampshire per capita expenditures on *Health care* were \$641 less than New England overall; \$222 less on *Food services and accommodation*; \$142 less on *Other services*, including communication, education services, and other personal services; and \$71 less on *Financial services and insurance*. Per capita personal expenditures on *Housing and utilities* were the only services category that was higher in New Hampshire than New England, with the state exceeding the region by \$97. New Hampshire per capita expenditures on all services categories were \$488 lower than in New England as a whole.

## Seasonally Adjusted Estimates

### Unemployment Estimates by Region

Seasonally Adjusted	May-16	Apr-16	May-15
United States	4.7%	5.0%	5.5%
Northeast	4.8%	4.8%	5.4%
New England	4.4%	4.4%	5.0%
Connecticut	5.7%	5.7%	5.6%
Maine	3.5%	3.4%	4.5%
Massachusetts	4.2%	4.2%	4.9%
New Hampshire	2.7%	2.6%	3.5%
Rhode Island	5.4%	5.4%	6.1%
Vermont	3.1%	3.2%	3.7%
Mid Atlantic	5.0%	5.0%	5.5%
New Jersey	4.9%	4.7%	5.8%
New York	4.7%	4.9%	5.4%
Pennsylvania	5.5%	5.3%	5.2%

### Local Area Unemployment Statistics (LAUS) Unemployment Rate, NH and US



### Current Employment Statistics (CES) by Place of Establishment

	Number of Jobs			Change From Previous	
	May-16	Apr-16	May-15	Month	Year
Total Nonfarm	661,100	665,100	656,600	-4,000	4,500
Total Private	572,900	576,300	565,900	-3,400	7,000
Mining and Logging	900	1,000	900	-100	0
Construction	24,700	25,200	24,000	-500	700
Manufacturing	66,300	66,700	67,200	-400	-900
Durable Goods	49,500	50,000	50,200	-500	-700
Non-Durable Goods	16,800	16,700	17,000	100	-200
Trade, Transportation, and Utilities	141,900	142,300	138,000	-400	3,900
Wholesale Trade	27,900	28,100	27,500	-200	400
Retail Trade	98,200	98,500	95,100	-300	3,100
Transportation, Warehousing, and Utilities	15,800	15,700	15,400	100	400
Information	12,600	12,600	12,300	0	300
Financial Activities	37,000	36,600	35,200	400	1,800
Finance and Insurance	29,800	29,500	28,500	300	1,300
Real Estate and Rental and Leasing	7,200	7,100	6,700	100	500
Professional and Business Services	76,800	77,400	76,400	-600	400
Professional, Scientific, and Technical Services	34,700	34,800	33,400	-100	1,300
Administrative and Support and Waste Management and Remediation Services	34,000	34,800	34,600	-800	-600
Education and Health Services	119,500	119,400	117,800	100	1,700
Educational Services	31,300	31,200	29,800	100	1,500
Health Care and Social Assistance	88,200	88,200	88,000	0	200
Leisure and Hospitality	66,700	68,300	68,800	-1,600	-2,100
Arts, Entertainment, and Recreation	10,300	11,300	11,400	-1,000	-1,100
Accommodation and Food Services	56,400	57,000	57,400	-600	-1,000
Other Services	26,500	26,800	25,300	-300	1,200
Government	88,200	88,800	90,700	-600	-2,500
Federal Government	7,600	7,500	7,500	100	100
State Government	23,400	24,300	24,600	-900	-1,200
Local Government	57,200	57,000	58,600	200	-1,400

**Current month is preliminary; past months are revised**

Prior data and area data are available on our web site at: [www.nhes.nh.gov/elmi/statistics/ces-data.htm](http://www.nhes.nh.gov/elmi/statistics/ces-data.htm)

## Not Seasonally Adjusted Estimates by Place of Residence

### Labor Force Estimates

New Hampshire	May-16	Apr-16	May-15
Total Civilian Labor Force	743,620	743,260	737,910
Employed	724,290	723,600	713,220
Unemployed	19,330	19,660	24,690
Unemployment Rate	2.6%	2.6%	3.3%

United States (# in thousands)	May-16	Apr-16	May-15
Total Civilian Labor Force	158,800	158,488	157,719
Employed	151,594	151,075	149,349
Unemployed	7,207	7,413	8,370
Unemployment Rate	4.5%	4.7%	5.3%

### Unemployment Rates by Area

Counties	May-16	Apr-16	May-15
Belknap	2.4%	2.6%	3.1%
Carroll	2.8%	3.2%	3.4%
Cheshire	2.5%	2.4%	3.3%
Coös	4.0%	4.7%	4.7%
Grafton	2.4%	2.4%	3.0%
Hillsborough	2.7%	2.8%	3.5%
Merrimack	2.3%	2.2%	3.1%
Rockingham	2.7%	2.8%	3.4%
Strafford	2.3%	2.2%	3.1%
Sullivan	2.1%	2.2%	2.8%

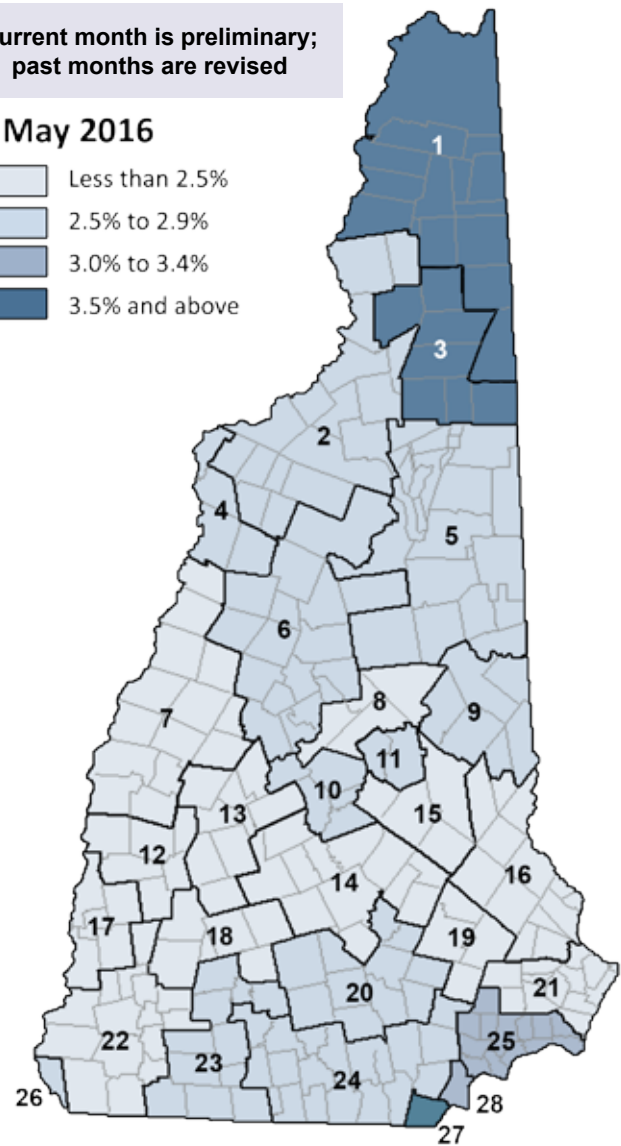
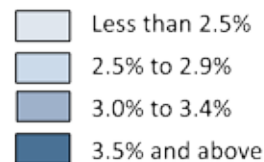
Map Key	Labor Market Areas	May-16	Apr-16	May-15
1	Colebrook, NH-VT LMA, NH Portion	4.0%	5.5%	4.4%
2	Littletton, NH-VT LMA, NH Portion	2.9%	3.3%	3.5%
3	Berlin NH Micropolitan NECTA	4.4%	5.3%	5.5%
4	Haverhill, NH LMA	2.6%	3.2%	3.1%
5	Conway, NH-ME LMA, NH Portion	2.9%	3.4%	3.5%
6	Plymouth, NH LMA	2.6%	2.4%	3.3%
7	Lebanon, NH-VT Micropolitan NECTA, NH Portion	2.1%	1.9%	2.7%
8	Meredith, NH LMA	2.2%	2.5%	2.8%
9	Wolfeboro, NH LMA	2.9%	3.0%	3.4%
10	Franklin, NH LMA	2.7%	2.9%	3.3%
11	Laconia, NH Micropolitan NECTA	2.5%	2.8%	3.2%
12	Claremont-Newport, NH LMA	2.1%	2.3%	2.8%
13	New London, NH LMA	2.4%	2.3%	3.1%
14	Concord, NH Micropolitan NECTA	2.2%	2.1%	3.0%
15	Belmont, NH LMA	2.4%	2.5%	3.1%
16	Dover-Durham, NH-ME Metropolitan NECTA, NH Portion	2.3%	2.2%	3.1%
17	Charlestown, NH LMA	2.0%	2.2%	2.7%
18	Hillsborough, NH LMA	2.3%	2.2%	3.4%
19	Raymond, NH LMA	2.4%	2.6%	3.3%
20	Manchester, NH Metropolitan NECTA	2.5%	2.5%	3.3%
21	Portsmouth, NH-ME Metropolitan NECTA, NH Portion	2.2%	2.3%	2.9%
22	Keene, NH Micropolitan NECTA	2.4%	2.3%	3.3%
23	Peterborough, NH LMA	2.5%	2.5%	3.2%
24	Nashua, NH-MA NECTA Division, NH Portion	2.9%	2.9%	3.7%
25	Seabrook-Hampstead Area, NH Portion, Haverhill-Newburyport-Amesbury MA-NH NECTA Division	3.1%	3.3%	3.9%
26	Hinsdale Town, NH Portion, Brattleboro, VT-NH LMA	2.9%	3.1%	3.2%
27	Pelham Town, NH Portion, Lowell-Billerica-Chelmsford, MA-NH NECTA Division	3.7%	3.8%	4.3%
28	Salem Town, NH Portion, Lawrence-Metuen-Salem, MA-NH NECTA Division	3.3%	3.5%	4.1%

### Unemployment Rates by Region

Not Seasonally Adjusted	May-16	Apr-16	May-15
United States	4.5%	4.7%	5.3%
Northeast	4.6%	4.7%	5.3%
New England	4.1%	4.2%	4.9%
Connecticut	5.4%	5.6%	5.6%
Maine	3.6%	3.8%	4.4%
Massachusetts	3.8%	3.8%	4.9%
New Hampshire	2.6%	2.6%	3.3%
Rhode Island	5.3%	4.9%	6.0%
Vermont	2.8%	3.0%	3.4%
Mid Atlantic	4.8%	4.8%	5.5%
New Jersey	4.9%	4.9%	5.8%
New York	4.2%	4.6%	5.3%
Pennsylvania	5.5%	5.2%	5.5%

Current month is preliminary;  
past months are revised

May 2016



New Hampshire unemployment and labor force estimates are calculated using a regression model which depends on Current Population Survey (CPS) estimates. City and town estimates are calculated using the Bureau of Labor Statistics "Handbook Method" and then adjusted to the State levels.

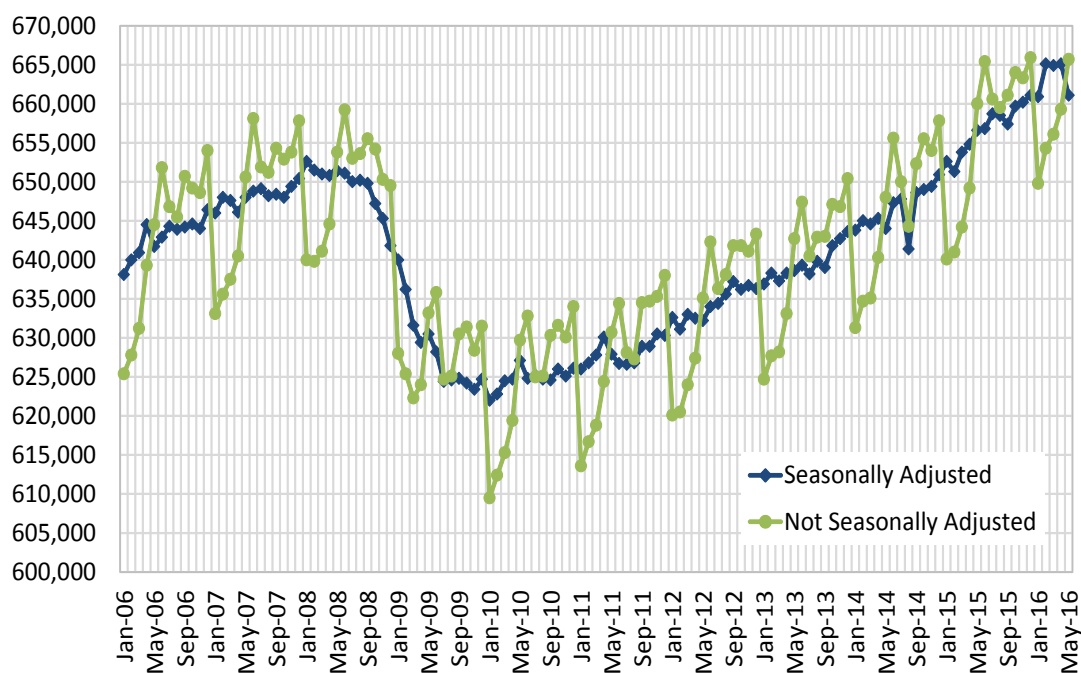
## Monthly Estimates by Place of Establishment

### New Hampshire Nonfarm Employment Statewide Not Seasonally Adjusted

Current month  
is preliminary;  
past months  
are revised

	Number of Jobs			Change From Previous	
	May-16	Apr-16	May-15	Month	Year
Total Nonfarm	665,700	659,300	660,000	6,400	5,700
Total Private	574,000	567,300	566,200	6,700	7,800
Mining and Logging	900	900	900	0	0
Construction	25,400	24,100	24,500	1,300	900
Manufacturing	66,400	66,500	67,200	-100	-800
Durable Goods	49,500	49,800	50,200	-300	-700
Non-Durable Goods	16,900	16,700	17,000	200	-100
Trade, Transportation, and Utilities	141,200	139,400	137,400	1,800	3,800
Wholesale Trade	27,900	28,100	27,600	-200	300
Retail Trade	97,500	96,000	94,400	1,500	3,100
Transportation, Warehousing, and Utilities	15,800	15,300	15,400	500	400
Information	12,600	12,600	12,300	0	300
Financial Activities	37,000	36,400	35,200	600	1,800
Professional and Business Services	77,200	77,700	76,600	-500	600
Education and Health Services	119,800	120,500	118,200	-700	1,600
Leisure and Hospitality	66,900	62,400	68,500	4,500	-1,600
Other Services	26,600	26,800	25,400	-200	1,200
Government	91,700	92,000	93,800	-300	-2,100
Federal Government	7,600	7,500	7,500	100	100
State Government	24,300	25,200	25,400	-900	-1,100
Local Government	59,800	59,300	60,900	500	-1,100

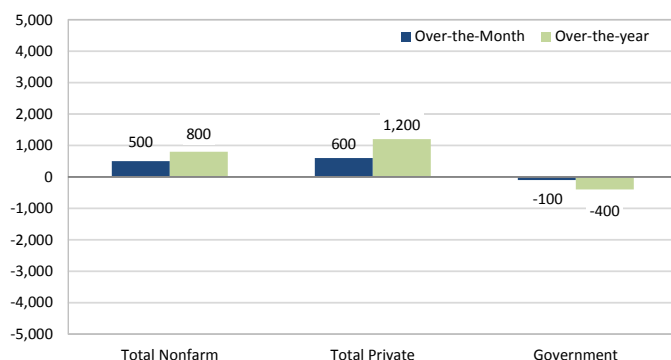
### Total Nonfarm Employment Trend for May 2016



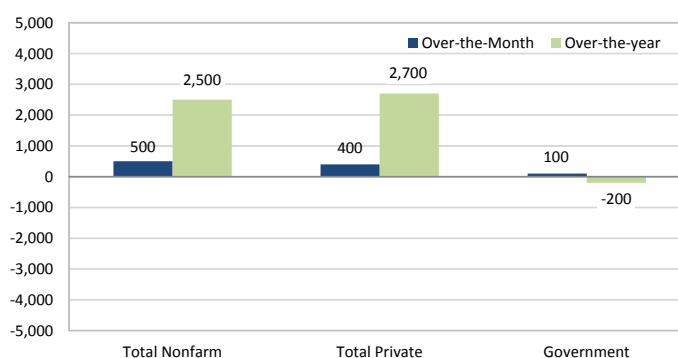
## Not Seasonally Adjusted Estimates by Place of Establishment

### Nonfarm Employment by Metropolitan Statistical Areas - May 2016

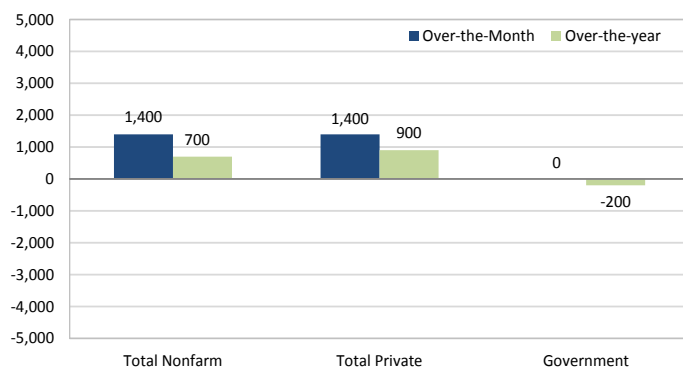
**Dover-Durham NH-MA Metro NECTA**



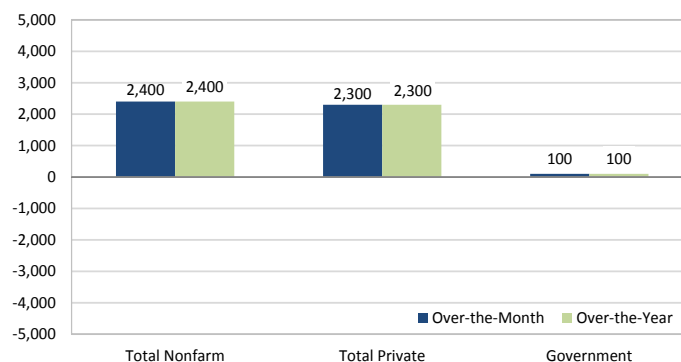
**Manchester Metro NECTA**



**Nashua NH-MA NECTA Division**

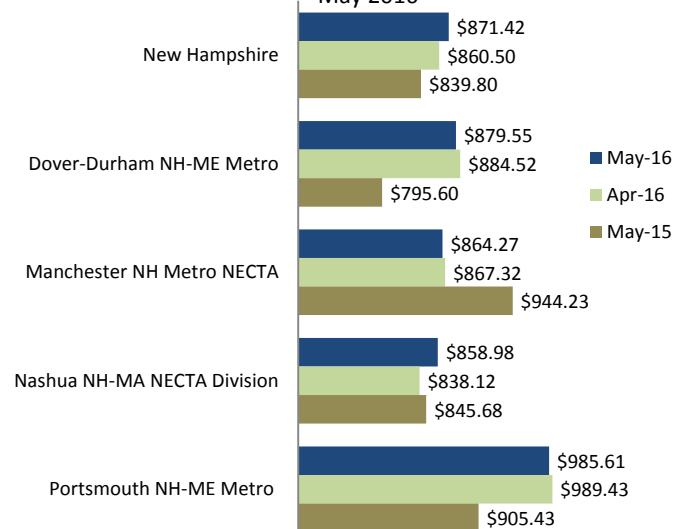


**Portsmouth NH-MA Metro NECTA**

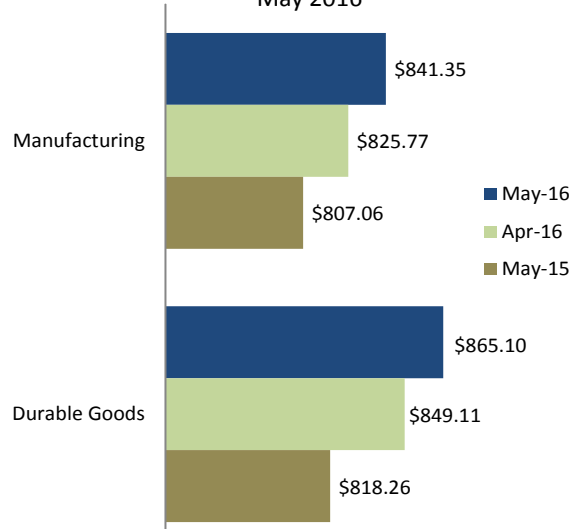


### Total Private Average Weekly Earnings Data

**All Employees Average Weekly Earnings  
Not Seasonally Adjusted  
May 2016**



**Production Workers Average Weekly Earnings  
Not Seasonally Adjusted  
May 2016**



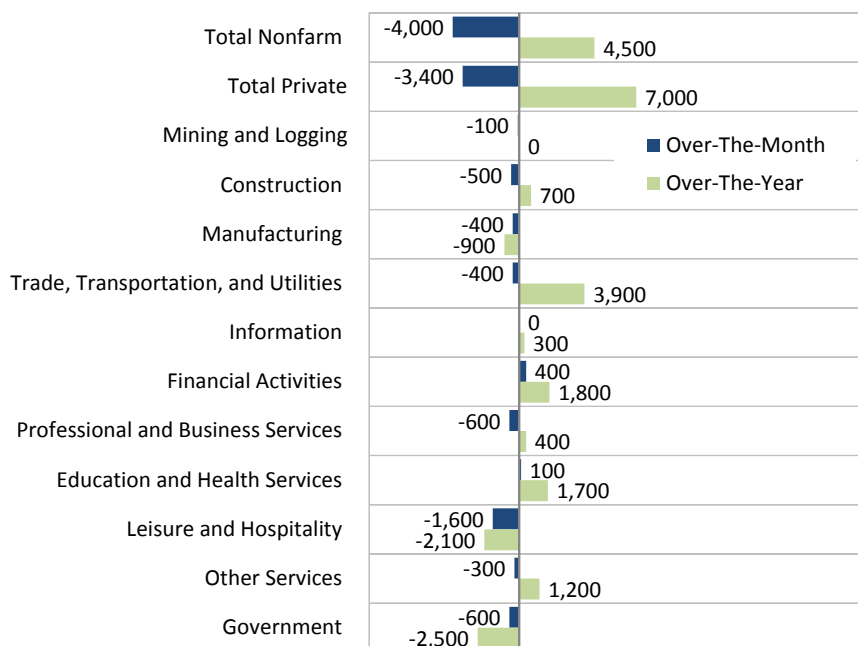
Sector data for the four areas and hours and earnings data are available on our web site: [www.nhes.nh.gov/elmi/statistics/ces-data.htm](http://www.nhes.nh.gov/elmi/statistics/ces-data.htm)

## Monthly Analysis of Current Employment Statistics (CES)

### Seasonally Adjusted Statistical Analysis of Nonfarm Employment

- From April 2016 to May 2016, New Hampshire's preliminary seasonally adjusted employment declined 4,000 jobs to 661,100.
- Employment in Leisure and hospitality decreased by 1,600 jobs over-the-month.
  - The job loss was driven by Arts, entertainment, and recreation, down 1,000 jobs
- Over-the-year, seasonally adjusted total nonfarm employment increased by 4,500 jobs.
- Employers in Trade, transportation, and utilities expanded their workforces by 3,900 jobs, from May 2015 to May 2016.
  - Over three-fourths of this job growth was in Retail trade, up 3,100 jobs.
- Changes in seasonally adjusted data reflect underlying economic changes and allow for comparisons of different time periods.

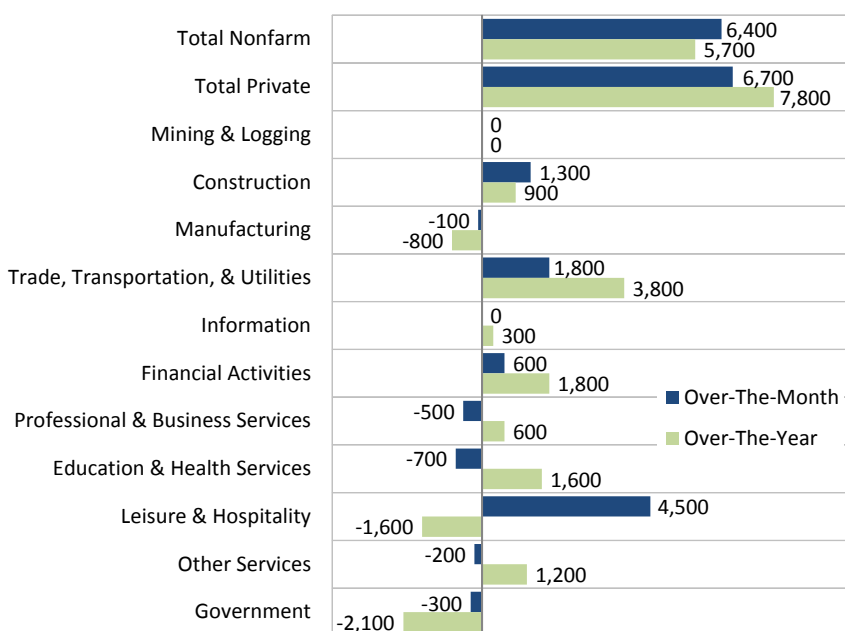
#### Seasonally Adjusted May 2016 Change



### Not Seasonally Adjusted Statistical Analysis of Nonfarm Employment

- New Hampshire's not seasonally adjusted employment increased to 665,700 jobs, adding 6,400 jobs, between April and May.
- Two-thirds of the job growth in total nonfarm can be attributed to employment in Leisure and hospitality, up 4,500 jobs over-the-year.
  - Accommodation and food services drove the bulk of this growth, with 3,200 additional jobs.
- From May 2015 to May 2016, not seasonally adjusted employment increased by 5,700 jobs.
- Two-thirds of this job growth can be attributed to Trade, transportation, and utilities, up 3,800 jobs over-the-year.
  - All sectors within Trade, transportation, and utilities experienced employment growth during this timeframe, the largest was in Retail trade, up 3,100 jobs.
- Changes in not seasonally adjusted data are due to seasonal patterns in hiring, as well as underlying economic changes.

#### Not Seasonally Adjusted May 2016 Change



For further analysis, see the *Detailed Monthly Analysis of Industry Employment Data* on our web site: [www.nhes.nh.gov/elmi/statistics/ces-data.htm](http://www.nhes.nh.gov/elmi/statistics/ces-data.htm)

## Consumer Price Index

## United States, All Urban Consumers

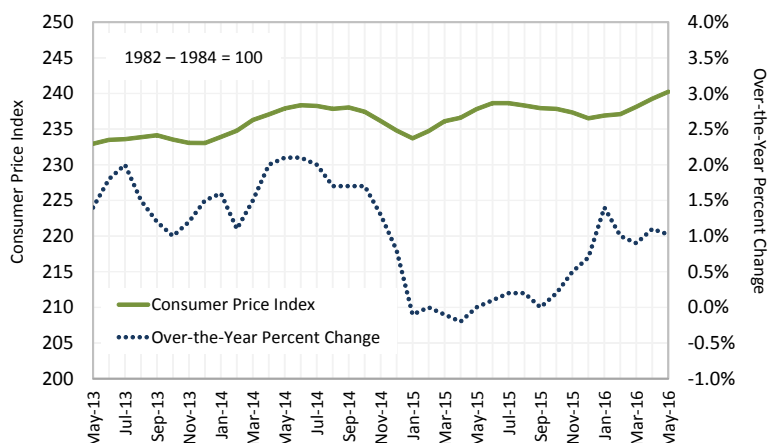
Not Seasonally Adjusted (CPI-U) (1982-1984=100)

May-16	Apr-16	May-15	Change from Previous	
			Month	Year
240.236	239.261	237.805	0.4%	1.0%

## Northeast, All Urban Consumers

Not Seasonally Adjusted (CPI-U) (1982-1984=100)

May-16	Apr-16	May-15	Change from Previous	
			Month	Year
255.021	254.27	252.700	0.3%	0.9%

Consumer Price Index  
United States, All Urban Consumers

## Unemployment Compensation Claims Activity

	Dec-15	Jan-16	Feb-16	Mar-16	Apr-16	May-16
Initial Claims	4,792	4,341	3,735	2,823	3,295	2,409
Continued Weeks Claimed	19,396	26,880	26,453	23,265	19,043	18,897
Average payment for a week of unemployment	\$309.36	\$300.62	\$301.81	\$301.61	\$307.46	\$310.08

*New Hampshire Economic Conditions* is published monthly in coordination with the Bureau of Labor Statistics and the Employment and Training Administration of the U.S. Department of Labor.

To Order Publications: Visit our Web site at <[www.nhes.nh.gov/elmi](http://www.nhes.nh.gov/elmi)>; call (603) 228-4124; or send a written request to the following address:

ELMI Publications  
NH Employment Security  
45 South Fruit Street  
Concord, NH 03301-4857

NH Employment Security is a proud member of America's Workforce Network and NH WORKS. NHES is an Equal Opportunity Employer and complies with the Americans with Disabilities Act. Auxiliary aids and services are available upon request to individuals with disabilities.

New Hampshire Employment Security  
Local Offices

Berlin . . . . .	752-5500	Claremont . . . . .	543-3111
Concord . . . . .	228-4100	Conway . . . . .	447-5924
Keene . . . . .	352-1904	Laconia . . . . .	524-3960
Littleton . . . . .	444-2971	Manchester . . . . .	627-7841
Nashua . . . . .	882-5177	Portsmouth . . . . .	436-3702
Salem . . . . .	893-9185	Somersworth . . . . .	742-3600

Claims calls: 1-800-266-2252

New Hampshire Employment Security  
Economic and Labor Market Information Bureau

General Information . . . . . (603) 228-4124  
<[www.nhes.nh.gov/elmi](http://www.nhes.nh.gov/elmi)>

Research Unit . . . . . 228-4173  
Economist . . . . . 229-4427  
Covered Employment & Wages . . . . . 228-4177  
Current Employment Statistics . . . . . 228-4179  
Local Area Unemployment Statistics . . . . 228-4167  
Occupational Employment Statistics . . . . 229-4315

