

# New Hampshire Economic Conditions

July 2010

## Population Change and the Labor Force

The foundation of New Hampshire's workforce is its population. The demographic make-up and size of the state's population determine the potential of how the future workforce will meet labor demand.

### Resident Population

The most recent estimate of New Hampshire's population was 1,324,575 as of July 1, 2009, according to the U.S. Census Bureau. Over the year, the state added 2,703 residents, the smallest increase since the beginning of the decade. The last time the state experienced such a small change was in 1991, when the population shrank over-the-year.

Population change is measured by two major components – natural increase and migration. A net 3,587 residents were gained from natural increase, the number of births minus deaths. That

increase was partially offset by the net effect of resident migration – net international migration plus net domestic migration. Total migration was a net loss of 815 residents from 2008 to 2009. This was the third consecutive year that New Hampshire experienced a net population loss because of domestic out-migration.

Net international migration includes the net movement of the Armed Forces between the United States and overseas.<sup>1</sup> Periods that the United States

has been at war have contributed to international out-migration of the population.

### Civilian Population

New Hampshire's civilian population (the portion of the resident population not in the active-duty military) was 1,323,422 persons as of July 1, 2009, an increase of 2,826 over-the-year. The increase of those 16 years or older was more than double that of the total civilian population, a gain of 6,510 people in this broad age group.

<sup>1</sup> Net International Migration is defined by the U.S. Census Bureau as any change of residence across the borders of the United States (50 states and District of Columbia). Net international migration is estimated in four parts: (1) net international migration of the foreign born, (2) net migration between the United States and Puerto Rico, (3) net migration of natives to and from the United States, and (4) net movement of the Armed Forces population between the United States and overseas. The largest component, net international migration of the foreign born, includes lawful permanent residents (immigrants), temporary migrants (such as students), humanitarian migrants (such as refugees), and people illegally present in the United States. These components are not estimated individually. Rates are expressed per 1,000 population. Source: U.S. Bureau of the Census, Population Topics Glossary, < <http://www.census.gov/popest/topics/terms/> > . Accessed 6/21/10.

## Contents

### Seasonally

#### Adjusted Estimates

Unemployment Rates.....3

Current Employment

Statistics.....3

### Not Seasonally

#### Adjusted Estimates

Unemployment Rates.....4

Current Employment

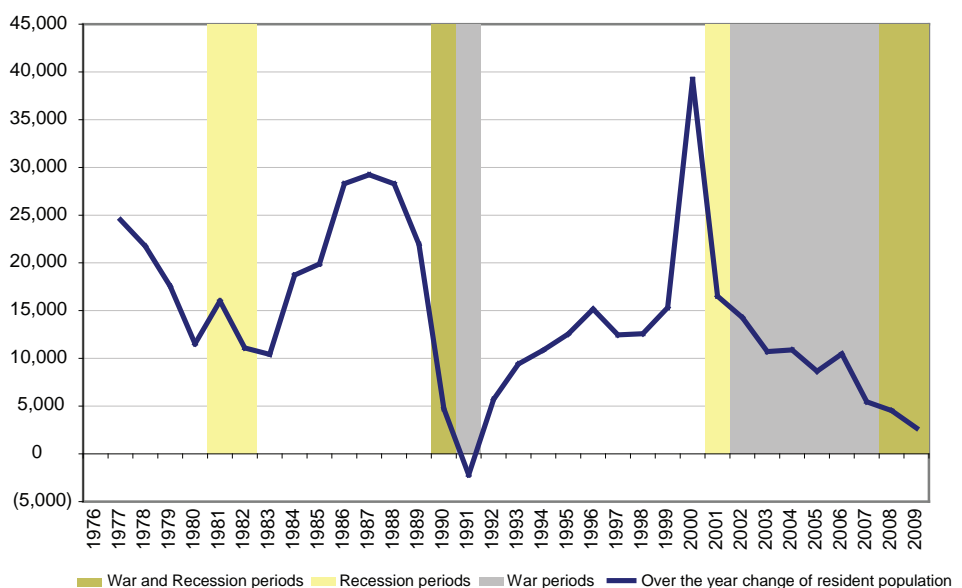
Statistics.....6

### Claims Activity.....7

Visit our Web site:

[www.nh.gov/nhes/elmi/](http://www.nh.gov/nhes/elmi/)

New Hampshire over-the-year change in resident population



1980, 1990, and 2000 population numbers are from decennial census counts. All other years are annual estimates. Methodologies may differ slightly.

However, the population in ages most likely to participate in the labor force<sup>2</sup> — those aged 16 to 64 years — increased by 1,657.

From July 1, 2000 to July 1, 2009, the 16 to 64 years age group grew by 8.6 percent, slightly faster than the increase in total population at 6.3 percent. But the 65 years and over age group grew by 17.1 percent over that same period, while the civilian population 0 to 15 years of age decreased in size.

<sup>2</sup> According to 2009 Geographic Profile, only one in five civilians aged 65 years and over participated in the labor force.

The current slow in-migration rates might not have an immediate impact on New Hampshire's labor force. In 10 to 15 years, however, should these rates continue, the increasingly smaller population entering the primary workforce supply will not compensate for current members who will be aging out of the primary workforce supply. Without population growth from those very young age cohorts, an influx of both domestic and international migrants would be needed to increase the labor force supply.

## Labor Force Supply

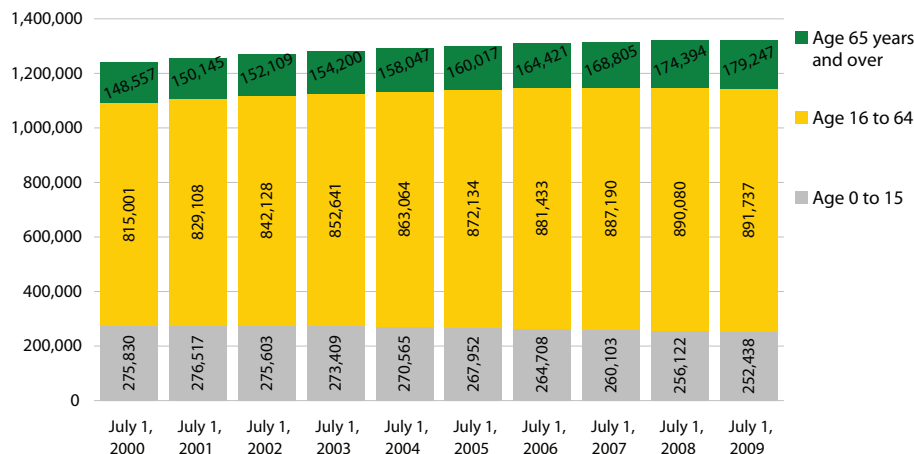
Changes in migration are affected by available economic opportunities and

conversely have an effect on expansion and contraction of economic activity. In other words, the demand for and supply of workers do not always match. The current level of unemployment means there is a larger supply of workers than there are jobs available. Workers tend to migrate towards areas that have opportunities for employment. With labor market conditions in most other parts of the nation, similar to (or worse than) New Hampshire many workers are staying where they are for now, reducing both in- and out-migration.

The definition of the labor force includes only civilian non-institutionalized population age 16 years or older. Some age groups are more likely to participate in the workforce, so evaluating just the overall size of the population is not sufficient to understand labor force changes.

Annette Nielsen  
Anita Josten

**New Hampshire Civilian Population by Age**

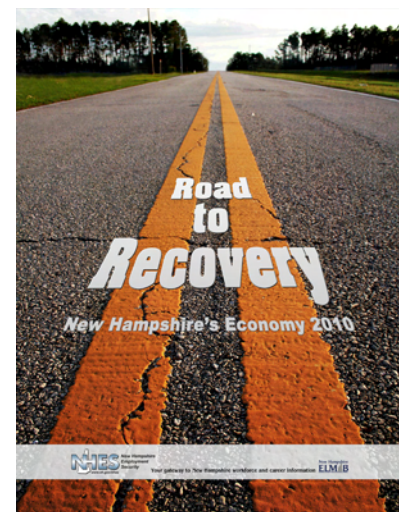


## Road to Recovery, New Hampshire's Economy 2010

This publication is a detailed state economic analysis intended to inform workforce decision and policy makers. The information will also be useful to anyone with a stake in New Hampshire's economy, whether they are involved in business or career planning, or general economic research and analysis.

The report provides a mid-year look at New Hampshire's economic situation. It includes the most recent data describing key economic indicators such as gross domestic product, employment, personal income, housing, and exports. In addition, the report looks forward, considering occupational employment projections and recent population trends.

**Road to Recovery**, along with all other reports produced by the Bureau, can be accessed at: [www.nh.gov/nhes/elmi](http://www.nh.gov/nhes/elmi)



## Seasonally Adjusted Estimates

### Unemployment Estimates by Region

Seasonally Adjusted	May-10	Apr-10	May-09
United States	9.7%	9.9%	9.4%
Northeast	8.9%	8.9%	8.4%
New England	8.9%	9.0%	8.2%
Connecticut	8.9%	9.0%	8.2%
Maine	8.0%	8.1%	8.2%
Massachusetts	9.2%	9.2%	8.2%
New Hampshire	6.4%	6.7%	6.3%
Rhode Island	12.3%	12.5%	10.7%
Vermont	6.2%	6.4%	7.3%
Mid Atlantic	8.9%	8.9%	8.4%
New Jersey	9.7%	9.8%	9.2%
New York	8.3%	8.4%	8.4%
Pennsylvania	9.1%	9.0%	8.0%

### Local Area Unemployment Statistics (LAUS) By Place of Residence

New Hampshire	Dec-09	Jan-10	Feb-10	Mar-10	Apr-10	May-10
Unemployment Rate	6.9%	7.0%	7.1%	7.0%	6.7%	6.4%
Civilian Labor Force	741,440	743,210	746,460	748,140	747,350	744,680
Number Employed	690,310	691,000	693,630	695,620	697,250	697,390
Number Unemployed	51,130	52,210	52,830	52,520	50,100	47,290
<b>United States (in thousands)</b>						
Unemployment Rate	10.0%	9.7%	9.7%	9.7%	9.9%	9.7%
Civilian Labor Force	153,059	153,170	153,512	153,910	154,715	154,393
Number Employed	137,792	138,333	138,641	138,905	139,455	139,420
Number Unemployed	15,267	14,837	14,871	15,005	15,260	14,973

### Current Employment Statistics (CES) By Place of Establishment

Supersector	Jan-10	Feb-10	Mar-10	Apr-10	May-10
Total Nonfarm	627,300	630,600	627,400	625,700	628,800
Construction	22,000	23,200	22,300	22,500	22,800
Manufacturing	63,800	64,300	64,600	64,800	65,700
Durable Goods	48,200	48,700	49,000	48,800	49,000
Non-Durable Goods	15,600	15,600	15,600	16,000	16,700
Trade, Transportation, and Utilities	136,500	135,000	135,200	135,100	134,900
Wholesale Trade	26,300	26,300	26,900	27,200	27,100
Retail Trade	95,700	94,300	94,100	93,600	93,400
Transportation and Utilities	14,500	14,400	14,200	14,300	14,400
Information	12,500	12,500	12,500	12,500	12,400
Financial Activities	35,100	35,000	35,000	35,300	35,100
Real Estate and Rental and Leasing	6,600	6,500	6,500	6,600	6,600
Professional and Business Services	63,900	64,500	64,400	64,500	63,500
Administrative and Support	29,100	29,100	28,500	29,400	29,100
Education and Health Services	107,100	107,400	107,400	107,600	107,200
Educational Services	22,700	22,700	22,600	22,800	22,700
Health Care and Social Assistance	84,400	84,700	84,800	84,800	84,500
Leisure and Hospitality	65,600	67,400	64,500	61,900	62,800
Arts, Entertainment, and Recreation	11,800	12,100	11,600	11,100	11,300
Accommodation and Food Services	53,800	55,300	52,900	50,800	51,500
Other Services	22,600	22,200	22,100	22,500	23,000
Government	97,500	98,400	98,600	98,200	100,500
Federal Government	7,700	7,600	8,200	8,400	10,000
State Government	25,700	26,100	25,800	25,200	25,600
Local Government	64,100	64,700	64,600	64,600	64,900
Manchester NH MetroNECTA	98,000	98,100	97,700	97,500	98,400
Nashua NH-MA NECTA Division	125,000	125,100	125,300	125,500	125,300
Portsmouth NH-ME MetroNECTA	53,800	54,200	53,900	54,500	55,200
Rochester-Dover NH-ME MetroNECTA	54,800	55,600	55,400	55,800	55,900

Current month is Preliminary  
Past months are Revised

Please note that not all supersectors meet the statistical criteria for publication in this category. We seasonally adjust the total nonfarm data series and all the published supersectors independently. Therefore, the sum of the published parts will not equal the total.

## Not Seasonally Adjusted Estimates by Place of Residence

### Labor Force Estimates

New Hampshire	May-10	Apr-10	May-09
Total Civilian Labor Force	737,160	737,450	739,150
Employed	693,550	690,700	693,970
Unemployed	43,610	46,750	45,180
Unemployment Rate	5.9%	6.3%	6.1%
United States (# in thousands)	May-10	Apr-10	May-09
Total Civilian Labor Force	153,866	153,911	154,336
Employed	139,497	139,302	140,363
Unemployed	14,369	14,609	13,973
Unemployment Rate	9.3%	9.5%	9.1%

### Rates by Area

Counties	May-10	Apr-10	May-09
Belknap	6.3%	7.2%	6.2%
Carroll	6.0%	6.9%	5.7%
Cheshire	5.8%	6.1%	5.5%
Coos	8.2%	9.6%	8.4%
Grafton	5.0%	5.5%	5.2%
Hillsborough	6.1%	6.5%	6.3%
Merrimack	5.3%	5.7%	5.4%
Rockingham	6.2%	6.5%	6.5%
Strafford	5.6%	5.9%	6.1%
Sullivan	5.5%	6.0%	5.6%

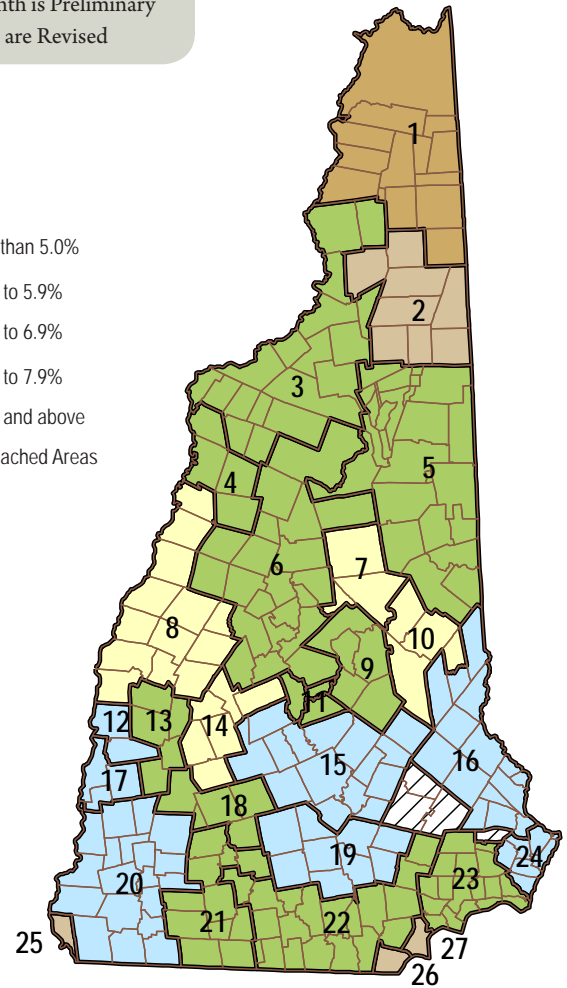
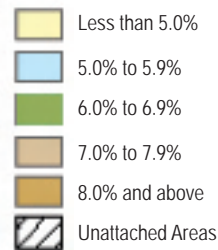
Map Key	Labor Market Areas	May-10	Apr-10	May-09
1	Colebrook NH-VT LMA, NH Portion	10.2%	12.7%	8.6%
2	Berlin NH MicroNECTA	7.4%	8.5%	8.0%
3	Littleton NH-VT LMA, NH Portion	6.8%	7.8%	7.3%
4	Haverhill NH LMA	6.3%	7.4%	7.3%
5	Conway NH-ME LMA, NH Portion	6.7%	7.6%	6.2%
6	Plymouth NH LMA	6.3%	6.8%	6.6%
7	Moultonborough NH LMA	4.4%	5.6%	4.5%
8	Lebanon NH-VT MicroNECTA, NH Portion	3.8%	4.0%	3.7%
9	Laconia NH MicroNECTA	6.3%	7.3%	6.2%
10	Wolfeboro NH LMA	4.8%	5.7%	4.6%
11	Franklin NH MicroNECTA	6.4%	7.2%	6.8%
12	Claremont NH MicroNECTA	5.7%	6.2%	5.9%
13	Newport NH LMA	6.3%	6.9%	6.1%
14	New London NH LMA	4.9%	5.0%	4.6%
15	Concord NH MicroNECTA	5.3%	5.8%	5.4%
16	Rochester-Dover NH-ME MetroNECTA, NH Portion	5.6%	5.9%	6.1%
17	Charlestown NH LMA	5.7%	6.8%	6.6%
18	Hillsborough NH LMA	6.1%	6.2%	7.3%
19	Manchester NH MetroNECTA	5.9%	6.4%	6.1%
20	Keene NH MicroNECTA	5.5%	5.7%	5.3%
21	Peterborough NH LMA	6.3%	6.8%	6.1%
22	Nashua NH-MA NECTA Division, NH Portion	6.1%	6.3%	6.3%
23	Exeter Area, NH Portion, Haverhill-N. Andover-Amesbury MA-NH NECTA Division	6.8%	7.2%	7.3%
24	Portsmouth NH-ME MetroNECTA, NH Portion	5.1%	5.3%	5.4%
25	Hinsdale Town, NH Portion, Brattleboro VT-NH LMA	7.6%	7.9%	6.0%
26	Pelham Town, NH Portion, Lowell-Billerica-Chelmsford MA-NH NECTA Division	7.2%	8.2%	7.8%
27	Salem Town, NH Portion, Lawrence-Methuen-Salem MA-NH NECTA Division	7.7%	8.0%	7.9%

### Rates by Region

Not Seasonally Adjusted	May-10	Apr-10	May-09
United States	9.3%	9.5%	9.1%
Northeast	8.7%	8.7%	8.2%
New England	8.6%	8.8%	8.0%
Connecticut	8.8%	8.5%	8.1%
Maine	7.9%	8.4%	8.0%
Massachusetts	9.1%	9.1%	8.1%
New Hampshire	5.9%	6.3%	6.1%
Rhode Island	11.8%	12.4%	10.8%
Vermont	5.9%	6.7%	7.1%
Mid Atlantic	8.7%	8.7%	8.2%
New Jersey	9.6%	9.6%	9.0%
New York	8.1%	8.1%	8.1%
Pennsylvania	9.2%	8.8%	7.9%

Current month is Preliminary  
Past months are Revised

May -10



New Hampshire unemployment and labor force estimates are calculated using a regression model which depends on Current Population Survey (CPS) estimates. Labor Market Area estimates are calculated using the Bureau of Labor Statistics "Handbook Method" and then adjusted to the State levels.



## Monthly Analysis of Current Employment Statistics (CES) Data

### Seasonally Adjusted:

Preliminary seasonally adjusted employment in New Hampshire increased by 3,100 jobs, over-the-month. Employment in government (supersector 90) rose by 2,300 jobs from April to May. Nearly 70 percent of this gain can be attributed to federal government, up 1,600 jobs, over-the-month. The growth in federal government was driven by the increased Census 2010 jobs. Manufacturing (supersector 30) and leisure and hospitality (supersector 70) each added 900 jobs from April to May. Employment in other services (supersector 80) rose by 500 jobs, over-the-month. During this same time frame, employers in construction (supersector 20) added 300 jobs.

Employment in professional and business services (supersector 60) decreased by 1,000 jobs over-the-month. From April to May employment in education and health services (supersector 65) declined by 400 jobs. Employment in financial activities (supersector 55) and trade, transportation, and utilities (supersector 40) fell by 200 jobs each from April to May.

Over-the-year, preliminary seasonally adjusted employment increased by 3,000 jobs. From May 2009 to May 2010, employment in government rose by 3,600 jobs. This growth was driven by federal government and local government, up 1,800 and 1,200 jobs respectively. Employers in other services added 1,500 jobs, over-the-year. Professional and business services reported 1,300 more jobs than were reported in May 2009. Employers in leisure and hospitality gained

800 jobs from May 2009 to May 2010. Education and health services and construction each added 400 and 300 jobs, respectively, over-the-year.

Manufacturing lost 3,000 jobs, over-the-year. Employers in financial activities reduced their workforces by 1,700 jobs. During this same time period, employment in information decreased by 300 jobs.

### Unadjusted

New Hampshire's preliminary not seasonally adjusted employment increased by 10,800 jobs, over-the-month. Employers in leisure and hospitality (supersector 70) gained 4,500 jobs from April to May. Over-the-month, employment in government (supersector 90) rose by 1,900 jobs. With the increased number of Census jobs, it was no surprise that the bulk of the additional jobs in government were in federal government, up 1,600 jobs. Employers in trade, transportation, and utilities (supersector 40) added 1,700 jobs from April to May. Just over 70 percent of this gain was driven by retail trade, up 1,200 jobs. Employment in construction (supersector 20) expanded by 1,600 jobs, over-the-month. From April to May employers in manufacturing (supersector 30) added 1,200 jobs to their payrolls. Employment in other services (supersector 80) increased by 900 jobs, over-the-month.

From April to May, employment in education and health services (supersector 65) decreased by 800 jobs.

### New Hampshire Nonfarm Wage and Salary Employment Not Seasonally Adjusted

Current Employment Statistics Employment by Supersector by place of establishment	Number of Jobs			Change from previous:	
	May-10 preliminary	Apr-10 revised	May-09	Month	Year
Total All Supersectors	630,500	619,700	628,700	10,800	1,800
Private Employment Total	527,600	518,700	528,500	8,900	-900
Mining and Logging	900	800	900	100	0
Construction	23,200	21,600	22,900	1,600	300
Manufacturing	65,500	64,300	68,500	1,200	-3,000
Durable Goods	48,800	48,500	52,300	300	-3,500
Non-Durable Goods	16,700	15,800	16,200	900	500
Trade, Transportation and Utilities	134,200	132,500	134,100	1,700	100
Wholesale Trade	27,000	26,900	26,700	100	300
Retail Trade	92,700	91,500	92,700	1,200	0
Transportation and Utilities	14,500	14,100	14,700	400	-200
Information	12,400	12,500	12,700	-100	-300
Financial Activities	35,000	35,100	36,800	-100	-1,800
Professional and Business	64,000	64,100	62,500	-100	1,500
Education and Health	107,500	108,300	107,000	-800	500
Leisure and Hospitality	61,900	57,400	61,600	4,500	300
Other Services	23,000	22,100	21,500	900	1,500
Government Total	102,900	101,000	100,200	1,900	2,700

Over-the-year, preliminary not seasonally employment increased by 1,800 jobs. This expansion was principally due to government, up 2,700 jobs. From May 2009 to May 2010 employment in other services and professional and business services each rose by 1,500 jobs. Employers in education and health services added 500 jobs, over-the-year. Employment in leisure and hospitality and construction each gained 300 jobs from May 2009 to May 2010.

Employers in manufacturing lost 3,000 jobs from May 2009 to May 2010. Financial activities reported 1,800 fewer jobs than were reported in May 2009. During this same time frame, employment in information decreased by 300 jobs.

Gail Clay

For further analysis please read the Detailed Monthly Analysis of Industry Employment Data on our Web site at [www.nh.gov/nhes/elmi/nonfarm.htm](http://www.nh.gov/nhes/elmi/nonfarm.htm)

New Hampshire Employment Security's Economic and Labor Market Information Bureau

## Not Seasonally Adjusted Estimates by Place of Establishment

### Nonfarm Wage and Salary Employment by Metropolitan Statistical Areas

Employment by Sector number of jobs by place of establishment	Manchester NH MetroNECTA			Nashua NH-MA NECTA Division			Portsmouth NH-ME MetroNECTA			Rochester-Dover NH-ME MetroNECTA		
	preliminary May-10	Change from previous:		preliminary May-10	Change from previous:		preliminary May-10	Change from previous:		preliminary May-10	Change from previous:	
		Month	Year		Month	Year		Month	Year		Month	Year
Total All Sectors	98,700	1,400	-400	125,700	700	-3,100	54,900	1,400	1,200	56,900	700	-300
Private Employment Total	85,600	800	-1,000	110,000	900	-2,700	44,100	1,100	600	42,800	700	-700
Mining and Logging and Construction	3,900	200	-300	4,000	300	-500	1,300	100	0	1,500	100	0
Manufacturing	7,700	100	-500	21,400	200	-1,300	3,500	100	0	5,700	100	-400
Trade, Transportation and Utilities	18,900	300	-200	29,200	-200	400	10,300	100	200	10,400	100	-300
Wholesale Trade	4,400	100	-100	5,300	0	-100	1,800	0	0	1,100	0	0
Retail Trade	11,900	400	0	20,000	-200	600	7,500	100	200	8,400	100	-200
Transportation, Warehousing and Utilities	Data not available			3,900	0	-100	1,000	0	0	900	0	-100
Information	3,300	0	-100	2,200	0	-100	2,000	0	200	1,200	0	-100
Financial Activities	7,100	0	-400	7,300	0	-600	3,600	0	-400	4,100	0	-200
Professional and Business	13,500	-200	500	12,700	0	-200	8,900	0	200	4,200	0	400
Education and Health	18,600	0	0	18,000	100	-100	6,100	0	100	8,500	0	0
Leisure and Hospitality	8,500	300	0	10,600	400	-300	6,900	800	200	5,300	300	-200
Other Services	4,100	100	0	4,600	100	0	1,500	0	100	1,900	100	100
Government Total	13,100	600	600	15,700	-200	-400	10,800	300	600	14,100	0	400

### All Employee Payroll and Earnings Data by Metropolitan Statistical Areas

Sector	Average Weekly Earnings			Average Weekly Hours			Average Hourly Earnings		
	May-10 preliminary	Apr-10 revised	May-09	May-10 preliminary	Apr-10 revised	May-09	May-10 preliminary	Apr-10 revised	May-09
<b>New Hampshire</b>									
Total Private	\$778.85	\$763.29	\$741.64	33.6	33.1	32.7	\$23.18	\$23.06	\$22.68
Goods Producing	\$1,028.72	\$1,015.60	\$978.95	40.2	40.0	38.3	\$25.59	\$25.39	\$25.56
Private Service Providing	\$729.01	\$712.62	\$691.11	32.3	31.7	31.5	\$22.57	\$22.48	\$21.94
Manufacturing	\$1,066.96	\$1,069.04	\$972.89	41.1	41.5	38.9	\$25.96	\$25.76	\$25.01
Trade, Transportation, and Utilities	\$657.80	\$658.58	\$612.16	32.5	32.7	31.9	\$20.24	\$20.14	\$19.19
Professional and Business Services	\$1,030.98	\$986.93	\$1,049.13	36.2	34.8	35.6	\$28.48	\$28.36	\$29.47
Education and Health Services	\$732.81	\$717.12	\$692.69	32.7	32.0	31.5	\$22.41	\$22.41	\$21.99
Leisure and Hospitality	\$322.83	\$313.15	\$312.77	24.2	23.3	23.1	\$13.34	\$13.44	\$13.54
<b>Manchester NH MetroNECTA</b>									
Total Private	\$752.51	\$746.03	\$759.81	32.2	31.8	32.1	\$23.37	\$23.46	\$23.67
<b>Nashua NH-MA NECTA Division, NH Portion</b>									
Total Private	\$948.35	\$925.82	\$851.15	34.7	34.1	32.4	\$27.33	\$27.15	\$26.27
<b>Portsmouth NH-ME MetroNECTA, NH Portion</b>									
Total Private	\$790.48	\$792.18	\$836.89	32.8	32.6	32.4	\$24.10	\$24.30	\$25.83
<b>Rochester-Dover NH-ME MetroNECTA, NH Portion</b>									
Total Private	\$727.29	\$733.49	\$713.30	33.5	34.1	35.0	\$21.71	\$21.51	\$20.38

### Production Workers in Manufacturing Payroll and Earnings Data

Sector	Average Weekly Earnings			Average Weekly Hours			Average Hourly Earnings		
	May-10 preliminary	Apr-10 revised	May-09	May-10 preliminary	Apr-10 revised	May-09	May-10 preliminary	Apr-10 revised	May-09
<b>New Hampshire</b>									
Manufacturing	\$745.07	\$734.09	\$675.90	42.6	41.9	38.8	\$17.49	\$17.52	\$17.42
Durable Goods	\$763.73	\$765.89	\$694.13	43.1	43.1	38.8	\$17.72	\$17.77	\$17.89

### Unemployment Compensation Claims Activity

Initial Claims	Dec-09	Jan-10	Feb-10	Mar-10	Apr-10	May-10
<b>All Offices</b>	12,261	10,376	8,639	8,378	8,052	6,052
Continued Claims	Dec-09	Jan-10	Feb-10	Mar-10	Apr-10	May-10
<b>All Offices</b>	81,923	107,247	95,659	102,265	85,894	86,958

### Consumer Price Index

United States, All Urban Consumers, Not Seasonally Adjusted  
(CPI-U) (1982-1984=100)

			Change from Previous	
May-10	Apr-10	May-09	Month	Year
218.178	218.009	213.856	0.1%	2.0%

### New Hampshire Employment Security Local Offices:

Berlin.....752-5500	Claremont.....543-3111
Concord.....228-4100	Conway.....447-5924
Keene.....352-1904	Laconia.....524-3960
Lebanon.....448-6340	Littleton.....444-2971
Manchester.....627-7841	Nashua.....882-5177
Portsmouth.....436-3702	Salem.....893-9185
Somersworth....742-3600	

**Claims calls refer to: 1-800-266-2252 option 3**

**NH Employment Security**  
Economic and Labor Market  
Information Bureau:

**General Information**  
(603) 228-4124  
<www.nh.gov/nhes/elmi/>

**Research Unit**  
228-4173

**Economist**  
229-4427

**Covered Employment & Wages**  
228-4177

**Current Employment Statistics**  
228-4179

**Local Area Unemployment  
Statistics**  
228-4167

**Occupational Employment  
Statistics**  
229-4315

*New Hampshire Economic Conditions* is published monthly in coordination with the Bureau of Labor Statistics and the Employment and Training Administration of the U.S. Department of Labor.

*To Order Publications:* Visit our Web site at <www.nh.gov/nhes/elmi/>; call (603) 228-4124; or send a written request to the following address:

ELMI Publications, NH Employment Security  
32 South Main Street  
Concord, NH 03301-4857

NH Employment Security is a proud member of America's Workforce Network and NH WORKS. NHEC is an Equal Opportunity Employer and complies with the Americans with Disabilities Act. Auxiliary aids and services are available upon request to individuals with disabilities. TDD ACCESS: RELAY NH 1-800-735-2964.

**New Hampshire**  
**ELMIB**  
Economic & Labor Market Information Bureau

**NHES** *New Hampshire  
Employment  
Security*  
www.nh.gov/nhes  
"We're working to keep New Hampshire working"