

# ECONOMIC CONDITIONS in New Hampshire



June 2003

Volume 103, Number 06

**New Publications  
Released** .....3

**Local Area  
Unemployment  
Statistics** .....5

**Current  
Employment  
Statistics** .....6

**For Additional  
Information** .....8

**Short-Term  
Projections  
2002-2004**....insert

## New Hampshire's Export Sales Declined 2002 Sales Dropped by \$538 Million

New Hampshire's export sales dropped from a peak of \$2.4 billion in 2001 to \$1.9 billion in 2002, a drop of nearly \$538 million. Except for Maine, every New England state experienced losses in export sales over-the-year. Nationally, export sales dropped by almost \$38 billion.

### Exports by Industry

Nearly 60 percent of the loss in export sales over-the-year was in one industry, Computer and electronic product manufacturing. Even though this industry recorded a decline of more than \$315 million in export sales from 2001 to 2002, it still remained the largest export industry in the State.

Electrical equipment and appliance manufacturing saw export sales plummet as well. This industry's export sales of \$205 million in 2001 were cut in half in 2002. Machinery manufacturing lost \$81 million in sales and Chemical manufacturing lost \$46 million.

This trend was right in line with what was happening to New Hampshire's employment in Manufacturing. The state lost more than 12,000 nonfarm jobs in Manufacturing from 2001 to 2002, the majority in Computer and electronic product manufacturing.

On the bright side, Transportation equipment manufacturing increased its

*Continued on page 2*

### New Hampshire Exports by NAICS, 2001 to 2002

Code	Industry	2001	2002	Change	
				Net	Percent
	All Industries	\$2,401,032,490	\$1,863,287,991	-\$537,744,499	-22.4%
	Computer and Electronic				
334	Product Manufacturing	884,570,158	569,545,898	-\$315,024,260	-35.6%
333	Machinery Manufacturing	466,493,896	385,298,421	-\$81,195,475	-17.4%
	Electrical Equipment and				
335	Appliance Manufacturing	205,115,576	99,713,688	-\$105,401,888	-51.4%
325	Chemical Manufacturing	143,222,647	96,960,065	-\$46,262,582	-32.3%
	Transportation Equipment				
336	Manufacturing	59,824,521	77,861,316	\$18,036,795	30.1%
	Miscellaneous				
339	Manufacturing	67,082,577	74,610,676	\$7,528,099	11.2%
	Fabricated Metal Product				
332	Manufacturing	96,969,229	73,240,152	-\$23,729,077	-24.5%
	Plastics and Rubber				
326	Product Manufacturing	60,793,632	66,662,748	\$5,869,116	9.7%
	Nonmetallic Mineral Product				
327	Manufacturing	50,830,318	48,814,917	-\$2,015,401	-4.0%
	Wood Product				
321	Manufacturing	42,637,642	42,736,291	\$98,649	0.2%

Source: Massachusetts Institute for Social and Economic Research



Published by the Economic and  
Labor Market Information Bureau

*Employment*  
**SECURITY**

**New Hampshire Exports by Country, 2001 to 2002**

Continued from page 1

Country	2001	2002	Change	
			Net	Percent
Total	\$2,401,032,490	\$1,863,287,991	-\$537,744,499	-22.4%
Canada	593,892,067	514,289,079	-\$79,602,988	-13.4%
United Kingdom	365,552,643	163,541,548	-\$202,011,095	-55.3%
Germany	143,389,816	128,401,148	-\$14,988,668	-10.5%
Japan	198,187,613	126,755,581	-\$71,432,032	-36.0%
Netherlands	82,273,376	90,145,340	\$7,871,964	9.6%
Italy	52,238,479	65,599,442	\$13,360,963	25.6%
Mexico	81,768,094	63,716,524	-\$18,051,570	-22.1%
France	65,888,662	63,658,990	-\$2,229,672	-3.4%
Korea, Republic of	28,605,930	55,155,491	\$26,549,561	92.8%
Ireland	77,166,217	50,227,384	-\$26,938,833	-34.9%

Source: Massachusetts Institute for Social and Economic Research

export sales by over \$18 million and Miscellaneous manufacturing gained another \$7 million in export sales over-the-year.

**Exports by Country**

Canada was New Hampshire's largest trading partner in 2001 with more than \$590 million in export sales. In 2002 sales dropped to \$514 million, a decline of nearly \$80 million.

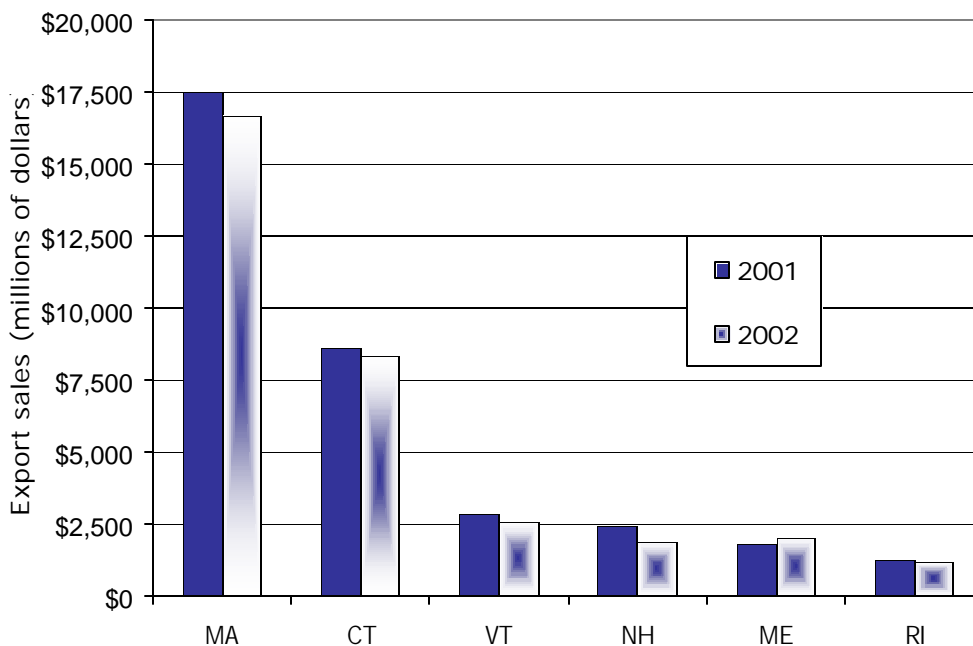
Canada still remained the Granite State's largest trading partner in 2002.

The United Kingdom was New Hampshire's second largest trading partner in 2001. Export sales to this country were more than \$365 million in 2001. However, sales dropped in half in 2002 to \$163 million. This reduction in sales didn't affect their ranking - they remained the Granite State's second largest trading partner in 2002.

Export sales to Korea nearly doubled over-the-year, going from \$28 million in 2001 to \$55 million in 2002. Sales to Italy and the Netherlands recorded increases over-the-year as well.

*Elisabeth Picard*

**Maine was the only state in the region to show an increase in Export Sales from 2001 to 2002**



**Job Notes 2003-2004** now available at [www.nhes.state.nh.us/elmi/](http://www.nhes.state.nh.us/elmi/)

**Job Notes 2003-2004** provides information to assist students and others in making more informed and better educated choices about their futures. The periodical is a career planning and development tool for the selection, planning, and building of a successful career. Included are articles about career planning, learning styles, and transfer-

able skills.

Information about jobs, how many workers in an occupation, and the projected demand for future employees, as well as wage information are also covered. Students, guidance counselors, parents, and individuals entering the job market or changing careers will find **Job Notes 2003-2004** a useful tool.

## New Publications Released



*Continued on page 8*

### Unemployment Compensation Claims Activity

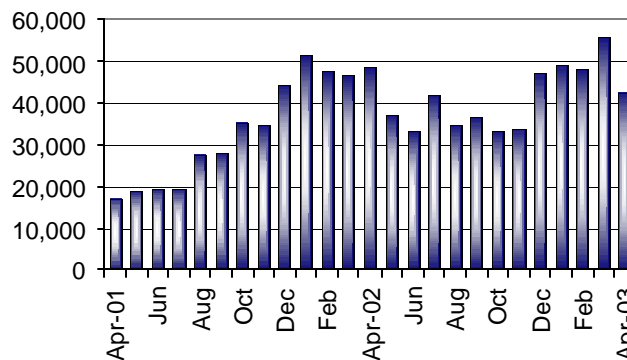
Total Regular Unemployment Compensation Programs:				Change from Previous			
				Month		Year	
	Apr-03	Mar-03	Apr-02	Net	Percent	Net	Percent
Initial Claims	4,258	4,777	6,228	-519	-10.9%	-1,970	-31.6%
Continued Weeks	42,627	55,691	48,406	-13,064	-23.5%	-5,779	-11.9%

### Claims Activity

### Unemployment Compensation Fund

Unemployment compensation fund balance at the end of April	\$258,212,192.41
Average payment for a week of total unemployment:	\$254.90
Net benefits paid:	\$9,576,461.42
Net contributions received during the month:	\$5,491,451.97
Interest Received:	\$0.00
Reed Act Distribution:	\$0.00
Reed Act Withdrawn:	\$0.00

### Trust Fund



### Continued Weeks Claimed

**Apr. 2001 - Apr. 2003**

The number of continued weeks claimed in April 2003 dropped more than 13,000 over-the-year.

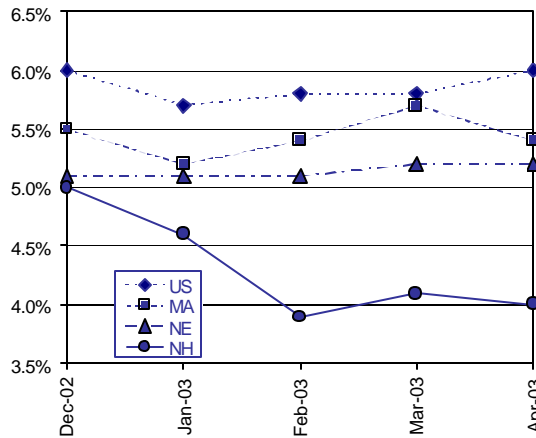
Apr-03	Mar-03	Apr-02	Change from Previous	
			Month	Year
183.8	184.2	179.8	-0.2%	2.2%

United States  
All Urban Areas (CPI-U)  
(1982-1984=100)

### Consumer Price Index

### N.H. and U.S. Seasonally Adjusted Unemployment Rates

New Hampshire's April rate of 4.0 percent was not only lowest in the region, but also two full percentage points below the national average.



	Unemployment Rates by Region		
	preliminary Apr-03	revised Mar-03	Apr-02
United States	6.0%	5.8%	5.9%
Northeast	5.7%	5.7%	5.6%
New England	5.2%	5.2%	4.8%
Connecticut	5.3%	5.2%	4.2%
Maine	4.8%	4.5%	4.3%
Massachusetts	5.4%	5.7%	5.3%
New Hampshire	4.0%	4.1%	4.6%
Rhode Island	5.3%	5.3%	4.9%
Vermont	4.3%	4.1%	3.8%
Mid Atlantic	6.0%	5.9%	5.8%
New Jersey	5.8%	5.9%	5.8%
New York	6.1%	6.0%	6.1%
Pennsylvania	5.9%	5.8%	5.5%

### Seasonally Adjusted Labor Force Estimates

By Place of Residence

	Dec-02	Jan-03	Feb-03	revised Mar-03	preliminary Apr-03
<b>New Hampshire</b>					
Unemployment Rate	5.0%	4.6%	3.9%	4.1%	4.0%
Civilian Labor Force	706,500	719,100	716,390	715,690	713,740
Number Employed	671,320	685,880	688,200	686,550	684,970
Number Unemployed	35,180	33,220	28,190	29,140	28,770
<b>United States (in thousands)</b>					
Unemployment Rate	6.0%	5.7%	5.8%	5.8%	6.0%
Civilian Labor Force	145,150	145,838	145,857	145,793	146,473
Number Employed	136,439	137,536	137,408	137,348	137,687
Number Unemployed	8,711	8,302	8,450	8,445	8,786

### Seasonally Adjusted Nonfarm Employment

By Place of Establishment

Supersector	Dec-02	Jan-03	Feb-03	revised Mar-03	preliminary Apr-03
Total Nonfarm	616,700	618,200	616,200	616,300	613,600
Construction	28,200	28,200	27,600	27,300	26,100
Manufacturing	82,800	81,500	80,500	80,900	81,900
Trade, Transportation, and Utilities	138,900	138,200	139,000	138,200	138,100
Leisure and Hospitality	61,100	61,700	61,200	61,700	61,400
Government	85,300	88,700	89,000	88,900	88,800

**Labor Force Estimates**

New Hampshire	Apr-03	Mar-03	Apr-02
Number of workers	preliminary	revised	
Total Civilian Labor Force	709,840	712,370	699,600
Employed	679,610	680,770	665,910
Unemployed	30,230	31,600	33,690
Unemployment Rate (percent of labor force)	4.3%	4.4%	4.8%

**Unemployment Rates by Area**

	preliminary Apr-03	revised Mar-03	Apr-02
<b>U.S and Regional States</b>			
United States	5.8%	6.2%	5.7%
Northeast	5.5%	6.0%	5.3%
New England	5.1%	5.6%	4.7%
Connecticut	5.2%	5.4%	4.1%
Maine	5.3%	5.3%	4.7%
Massachusetts	5.3%	6.1%	5.1%
New Hampshire	4.3%	4.4%	4.8%
Rhode Island	5.0%	5.7%	4.6%
Vermont	4.6%	4.7%	4.0%
Mid Atlantic	5.7%	6.2%	5.6%
New Jersey	5.5%	6.0%	5.5%
New York	5.9%	6.3%	5.9%
Pennsylvania	5.5%	6.2%	5.2%
<b>Labor Market Areas</b>			
Berlin LMA	6.4%	7.1%	14.9%
Seabrook-South Hampton NH Portion Boston MA-NH PMSA	8.4%	8.9%	8.0%
Claremont LMA	2.7%	2.7%	2.8%
Colebrook LMA	9.0%	3.7%	8.5%
Concord LMA	3.1%	3.4%	3.2%
Conway LMA	4.1%	3.7%	4.6%
NH Portion Hartford-Lebanon, VT-NH LMA	1.4%	1.3%	1.5%
NH Portion Keene-Brattleboro, NH-VT LMA	2.8%	2.9%	3.5%
Laconia LMA	3.6%	3.8%	4.0%
Lancaster LMA	5.3%	5.5%	5.4%
Salem-Derry, NH Portion Lawrence, MA-NH PMSA	6.3%	6.5%	6.9%
Littleton LMA	3.8%	3.8%	4.6%
Pelham, NH Portion Lowell, MA-NH PMSA	6.3%	6.6%	7.6%
Manchester PMSA	4.2%	4.5%	4.6%
Nashua PMSA	5.4%	5.5%	6.3%
Peterborough LMA	3.7%	4.0%	3.9%
Plymouth LMA	3.8%	3.6%	3.8%
NH Portion Portsmouth- Rochester, NH-ME PMSA	3.8%	4.1%	4.2%
<b>Counties</b>			
Belknap	3.7%	4.0%	4.1%
Carroll	4.1%	3.6%	4.4%
Cheshire	3.1%	3.3%	3.8%
Coos	6.4%	6.0%	10.7%
Grafton	2.5%	2.5%	2.7%
Hillsborough	4.7%	5.0%	5.4%
Merrimack	3.0%	3.3%	3.0%
Rockingham	5.3%	5.5%	5.7%
Strafford	3.7%	4.1%	4.3%
Sullivan	2.7%	2.7%	2.7%

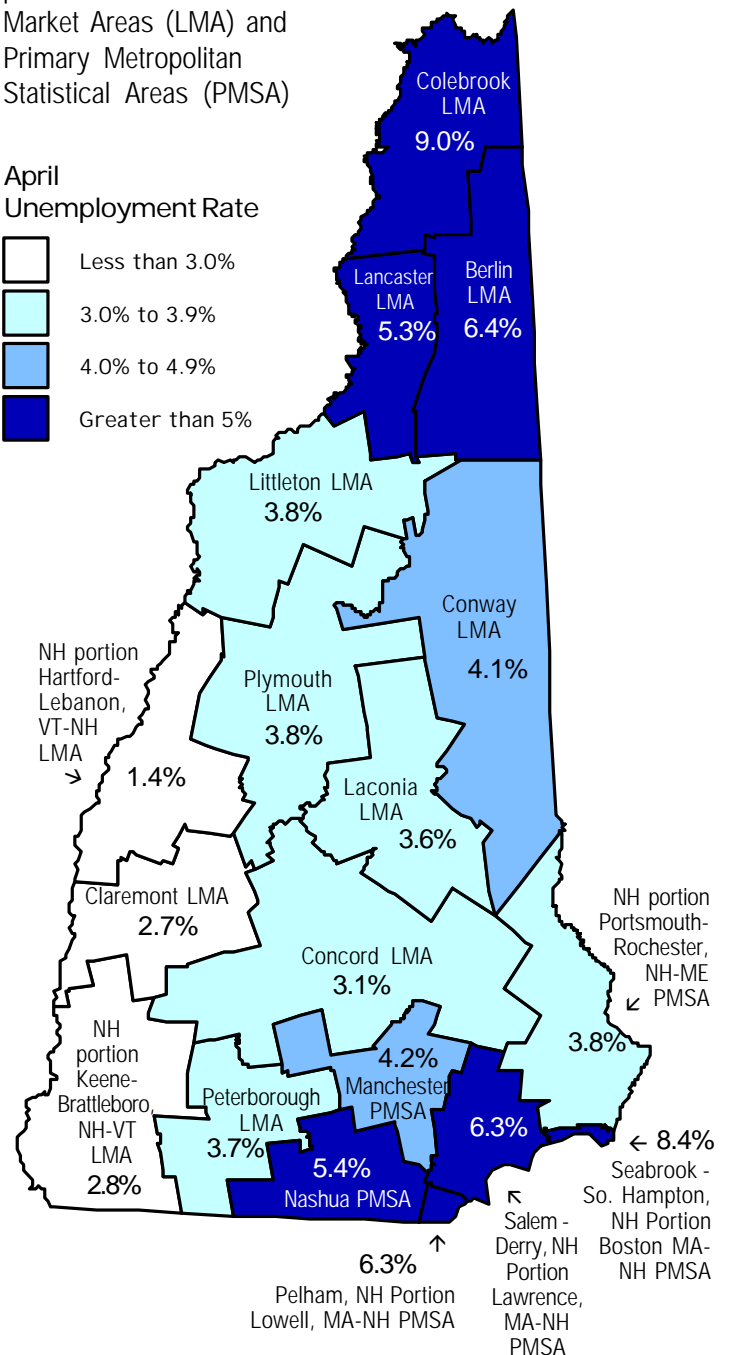
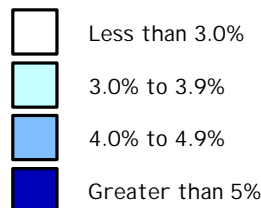
Local Area  
Unemployment  
Statistics  
(LAUS)

Not Seasonally  
Adjusted

By Place of Residence

Unemployment rates in the New Hampshire portion of its Labor Market Areas (LMA) and Primary Metropolitan Statistical Areas (PMSA)

April  
Unemployment Rate



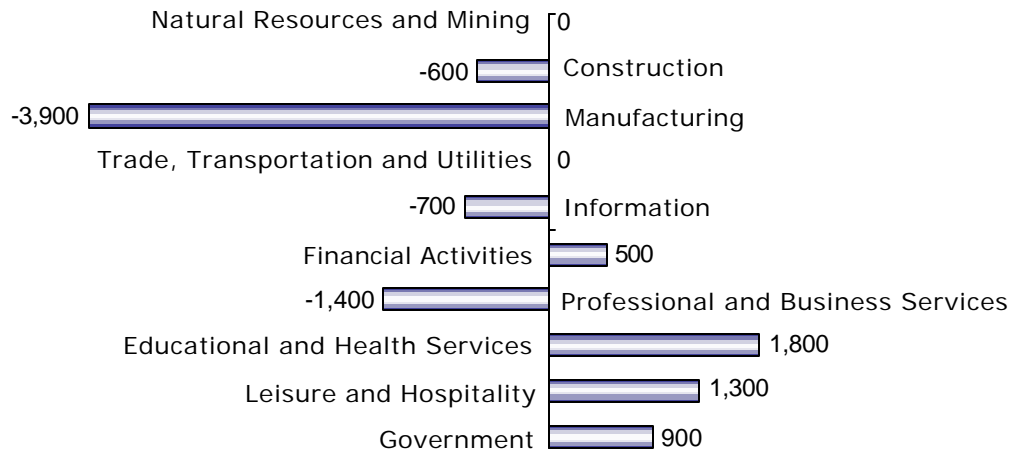
**Monthly Not Seasonally Adjusted New Hampshire Nonfarm Wage and Salary Employment**

The number of jobs added in both manufacturing and leisure and hospitality over-the-month equaled the total number of jobs added statewide.

Current Employment Statistics Employment by Sector by place of establishment	Number of Jobs			Change from previous:	
	Apr-03 (preliminary)	Mar-03 (revised)	Apr-02	Month	Year
	Total All Sectors	610,500	608,900	612,900	1,600
Private Employment Total	519,000	517,000	522,300	2,000	-3,300
Natural Resources & Mining	900	900	900	0	0
Construction	25,700	25,200	26,300	500	-600
Manufacturing	82,200	81,200	86,100	1,000	-3,900
Durable Goods	60,800	60,000	64,300	800	-3,500
Non-Durable Goods	21,400	21,200	21,800	200	-400
Trade, Transportation and Utilities	135,900	135,400	135,900	500	0
Wholesale Trade	25,900	26,000	26,400	-100	-500
Retail Trade	94,400	93,800	93,700	600	700
Transportation and Utilities	15,600	15,600	15,800	0	-200
Information	12,300	12,400	13,000	-100	-700
Financial Activities	36,600	36,700	36,100	-100	500
Professional and Business	52,000	52,100	53,400	-100	-1,400
Educational and Health	93,900	94,000	92,100	-100	1,800
Leisure and Hospitality	57,900	57,300	56,600	600	1,300
Other Services	21,600	21,800	21,900	-200	-300
Government Total	91,500	91,900	90,600	-400	900

**Change in Nonfarm Employment**

April 02 to April 03



**Monthly Analysis of Current Employment Statistics (CES) data**

For Further Analysis Please read the *Detailed Monthly Analysis of Industry Employment Data* on our Web site at <[www.nhes.state.nh.us/elmi/nonfarm.htm](http://www.nhes.state.nh.us/elmi/nonfarm.htm)>

**Seasonally Adjusted:** April's preliminary seasonally adjusted estimates showed that New Hampshire's employment level dropped by 2,700 jobs at the total nonfarm level. Construction (supersector 20) absorbed 1,200 of those lost jobs. Employment in leisure and hospitality (supersector 70) fell by 300 jobs. Trade, transportation, and utilities (supersector 40) and government (supersector 90) each dropped 100 jobs from their respective rosters.

The real bright spot in April's estimates was manufacturing (supersector 30), as it expanded its ranks by 1,000 jobs during the month.

**Unadjusted:** Total nonfarm employment grew by 1,600 jobs in April according to the preliminary unadjusted estimates. Again, manufacturing (supersector 30) was the star performer as it added 1,000 jobs. Leisure and hospitality (supersector 70) brought 600

*Continued on page 7*



### Monthly Unadjusted Nonfarm Wages and Salary Employment by Primary Metropolitan Statistical Area

Employment by Sector number of jobs by place of establishment	Manchester PMSA			Nashua PMSA			Portsmouth-Rochester NH-ME PMSA		
	Preliminary Apr-03	Change from previous:		Preliminary Apr-03	Change from previous:		Preliminary Apr-03	Change from previous:	
		Month	Year		Month	Year		Month	Year
Total All Sectors	108,000	400	200	94,100	400	-900	126,200	1,400	1,300
Private Employment Total	95,100	400	-300	84,200	400	-700	101,100	1,100	600
Natural Resources and Construction	6,400	200	500	3,600	200	100	4,400	200	100
Manufacturing	12,000	200	-100	21,800	100	-1,200	13,200	-100	-700
Trade, Transportation, and Utilities	23,800	0	500	21,200	100	100	27,100	200	1,300
Wholesale Trade	6,300	100	300	3,600	100	200	4,200	100	-300
Retail Trade	13,600	-200	200	15,500	0	-200	20,300	100	1,600
Transportation and Utilities	3,900	100	0	2,100	0	100	2,600	0	0
Information	3,200	0	0	1,700	0	-200	3,200	100	-100
Financial Activities	8,300	-100	-200	6,200	0	-200	7,200	0	0
Professional and Business	11,900	-200	-700	7,500	100	100	11,000	200	-900
Educational and Health	16,400	0	0	11,600	-100	400	18,700	100	1,100
Leisure and Hospitality	8,600	300	-300	7,400	100	200	10,100	10,100	10,100
Services	4,500	0	0	3,200	-100	0	4,200	0	300
Government Total	12,900	0	500	9,900	0	-200	25,100	300	700

### Average Earnings and Hours of Production Workers in Manufacturing

Sector	Average Weekly Earnings			Average Weekly Hours			Average Hourly Earnings		
	Apr-03 prelim.	Mar-03 revised	Apr-02	Apr-03 prelim.	Mar-03 revised	Apr-02	Apr-03 prelim.	Mar-03 revised	Apr-02
<b>New Hampshire</b>									
All Manufacturing	\$600.89	\$602.24	\$556.40	39.9	40.5	39.8	\$15.06	\$14.87	\$13.98
Durable Goods	629.30	633.29	582.61	40.6	41.5	40.6	15.50	15.26	14.35
Nondurable Goods	530.22	524.40	483.54	38.2	38.0	37.6	13.88	13.80	12.86
<b>Manchester PMSA</b>									
All Manufacturing	\$616.18	\$625.28	\$609.91	39.6	39.6	38.7	\$15.56	\$15.79	\$15.76
<b>Nashua PMSA</b>									
All Manufacturing	\$593.64	\$595.23	\$569.05	38.8	40.3	39.6	\$15.30	\$14.77	\$14.37
<b>Portsmouth-Rochester, NH-MA PMSA</b>									
All Manufacturing	\$662.06	\$668.93	\$655.08	43.3	44.3	42.4	\$15.29	\$15.10	\$15.45

additional workers on board, while trade, transportation, and utilities (supersector 40) and construction (supersector 20) each augmented their work force with 500 additional jobs.

Natural resources and mining (supersector 10) held employment at the previous month's level.

The aforementioned gains were offset somewhat by a 400-job reduction in

government (supersector 90). Other services (supersector 80) lost 200 jobs, as information (supersector 50), educational and health services (supersector 55), professional and business services (supersector 60), and financial activities (supersector 65) each experienced a minor downward shift of 100 jobs.

*B. G. McKay*

## New Publications Released

*Continued from page 3*

**NH Employment Security**  
Economic and Labor Market  
Information Bureau:

### General Information

(603) 228-4124  
elmi@nhes.state.nh.us  
<[www.nhes.state.nh.us/elmi/](http://www.nhes.state.nh.us/elmi/)>

### Research Unit

228-4173

### Economist

228-4122

### Covered Employment & Wages

228-4177

### Current Employment Statistics

228-4127

### Local Area Unemployment Statistics

228-4175

### Occupational Employment Statistics

229-4315

### ***New Industry Profile: Construction Jobs and Industries in New Hampshire, April 2003***

This report places a spotlight on the Construction industry in the Granite State, as well as the wide variety of occupations in demand within the trade. Additional information is provided including job mix, apprenticeships, earning potential, and occupational employment projections to year 2010.

### ***2001 New Hampshire County Profile – Employment and Wage Data: 70 Pages, May 2003***

This publication provides analysis and statistical tables relating to the number of employing units, average annual employment, and the average weekly wages in employment covered by unemployment insurance programs in New Hampshire and its counties. A brief snapshot of each county contains land area, population, labor force, travel time, and housing costs, as well as other selected statistics.

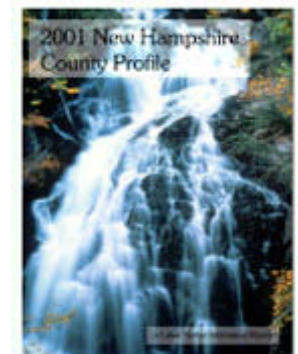
Goods producing, service providing, and government employment for each city, town, and unincorporated place in New Hampshire are detailed on-line only by accessing our web site.

**To Order Publications:** Visit our Web site at <[www.nhes.state.nh.us/elmi/](http://www.nhes.state.nh.us/elmi/)>; call (603) 228-4124; or send a written request to the following address:

*Economic Conditions in New Hampshire* is published monthly in coordination with the Bureau of Labor Statistics and the Employment and Training Administration of the U.S. Department of Labor.

**ELMI Publications, NH Employment Security**  
32 South Main Street  
Concord, NH 03301-4857

NH Employment Security is a proud member of America's Workforce Network and NH WORKS. NHES is an Equal Opportunity Employer and complies with the Americans with Disabilities Act. Auxiliary aids and services are available upon request to individuals with disabilities. TDD ACCESS: RELAY NH 1-800-735-2964.



NH EMPLOYMENT SECURITY  
32 SOUTH MAIN STREET  
CONCORD NH 03301-4857

OFFICIAL BUSINESS

ADDRESS SERVICE REQUESTED

**New Hampshire**  
**ELMI**  
Economic & Labor Market Information Bureau